



Used to manipulate round components, these grippers guarantee an high precision thanks to the synchronizes closure of the three gripping jaws and to the prismatic guides system. Ideal for specific sectors like pick-and-place (P&Ps), machines tools interlocking and many other fields, grippers of PX series cover all different exigencies of modern industrial automation, thanks to their compact dimensions.

Díky manipulaci s kulatými komponenty zaručují tyto chapadla vysokou přesnost díky synchronizovanému uzavření tří upínacích čelistí a systému prizmatických vodítek. Ideální pro specifické sektory, jako je pick-and-place (P & Ps), zámky obráběcích strojů a mnoho dalších oborů, chapadla řady PX pokrývají všechny jejich potřeby moderní průmyslové automatizace díky svým kompaktním rozměrům.

Utilizzate per la manipolazione di pezzi tondi, queste pinze garantiscono un grande precisione grazie alla chiusura sincronizzata delle tre dita di presa e al sistema prismatico delle guide. Ideale per settori come pick-and-place (P&Ps), asseverimento macchine utensili e tanti altri settori, le pinze della serie PX rispondono a tutte le esigenze dell'automazione industriale moderna, grazie all'estrema compattezza degli ingombri.

#### ORDERING CODE / OBJEDNÁVKOVÝ KÓD / CHIAVE DI CODIFICA

P X 3 0 0

Ø gripper / Ø chapadlo / Ø pinza  
16 - 20 - 25 - 32 - 40 - 50 - 63 mm

3 = Double acting / Dvojčinný / Doppio effetto

#### TECHNICAL DATA / TECHNICKÁ DATA / DATI TECNICI

Bore	External gripping force (5 bar) Vnější uchopovací síla (5 bar) Forza di presa esterna (5bar)	Internal gripping force (5 bar) Vnitřní uchopná síla (5 bar) Forza di presa interna (5bar)	Weight Hmotnost Peso
Ø16	14 (N)	16 (N)	80 gr
Ø20	25 (N)	28 (N)	110 gr
Ø25	42 (N)	47 (N)	140 gr
Ø32	74 (N)	82 (N)	237 gr
Ø40	118 (N)	130 (N)	351 gr
Ø50	187 (N)	204 (N)	541 gr
Ø63	335 (N)	359 (N)	1020 gr

Fluid / Médium / Fluido

Lubricated or non lubricated air / Mazaný nebo nemazaný vzduch / Aria con o senza lubrificazione

Operating temperature range / Rozsah provozních teplot / Temp. di esercizio

-10°C / +60°C

Pressure range / Rozsah tlaku / Pressione di utilizzo

2 - 7 bar

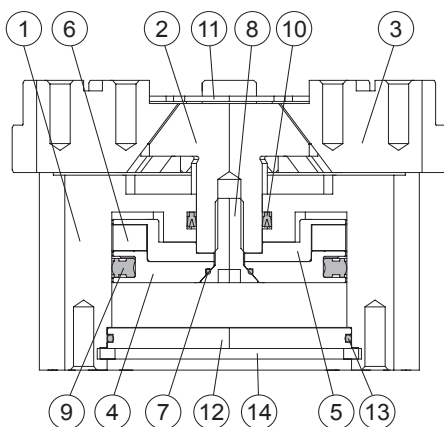
Action tolerance / Akční tolerance / Tolleranza d'azione

± 0.01 mm

Max operating frequency / Maximální provozní frekvence / Max frequenza operativa

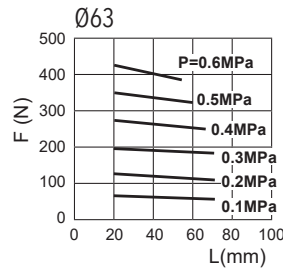
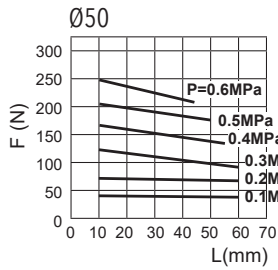
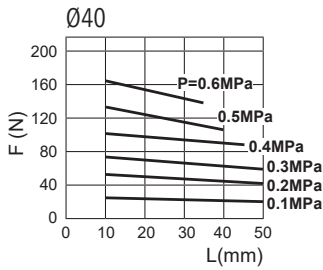
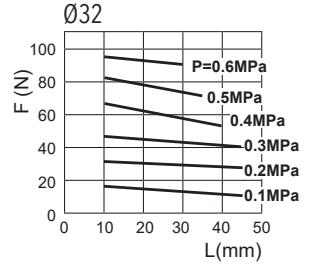
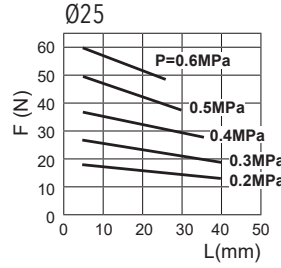
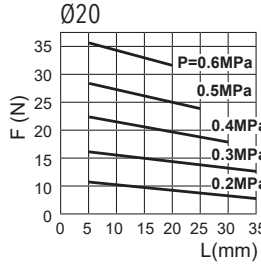
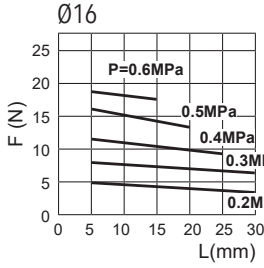
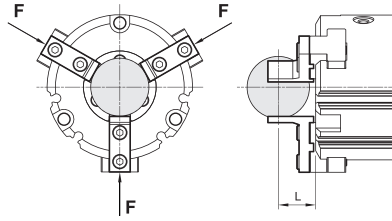
Ø16 - Ø20 - Ø25 = 120 c.p.m. / Ø32 - Ø40 Ø50 Ø63 = 60 c.p.m

#### COMPONENTS / KOMPONENTY / COMPONENTI

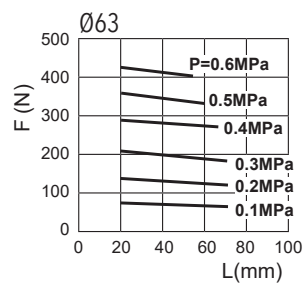
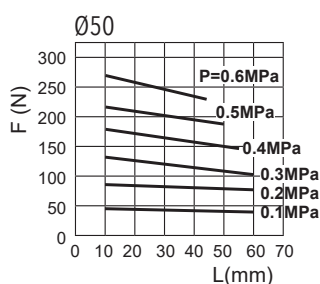
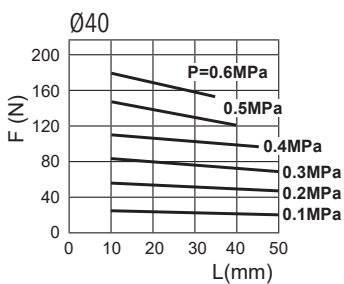
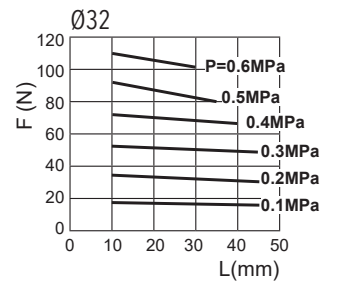
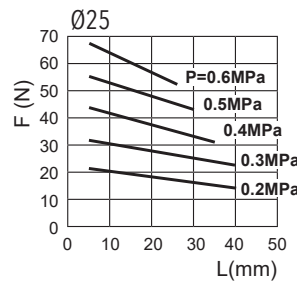
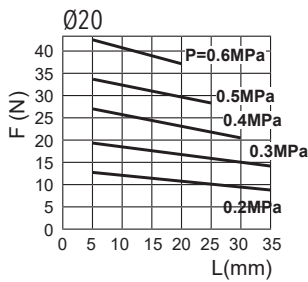
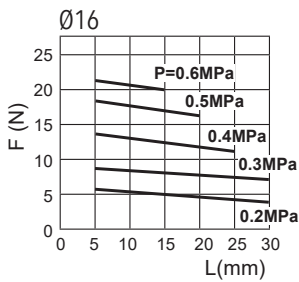
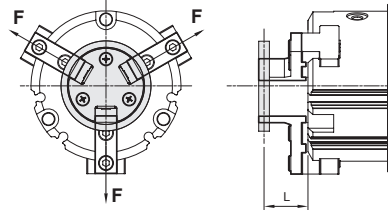


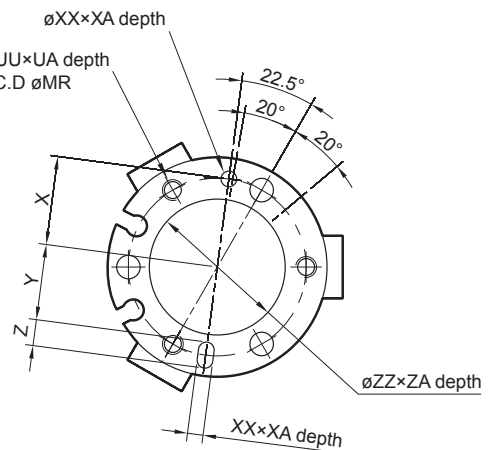
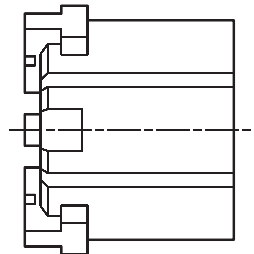
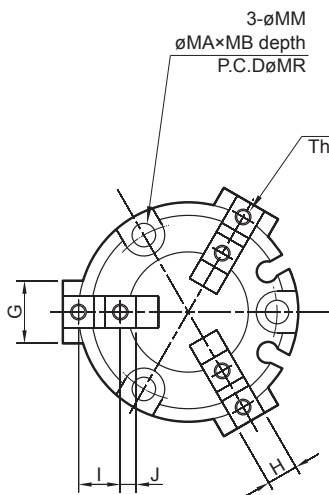
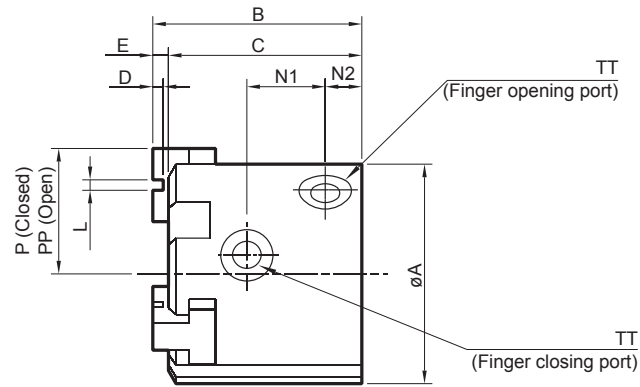
DESCRIPTION / POPIS / DESCRIZIONE	MATERIAL / MATERIÁL / MATERIALE
1 body / tělo / corpo	aluminium / hliník / alluminio
2 lever / páka / leva	steel / ocel / acciaio
3 guide / průvodce / guida	steel / ocel / acciaio
4 piston / pist / pistone	aluminium / hliník / alluminio
5 piston / pist / pistone	aluminium / hliník / alluminio
6 magnet / magnet / magnete	magnetic material / magnetický materiál
7 O-ring / O-kroužek	NBR
8 screw / šroub / vite	steel / ocel / acciaio
9 seal / těsnění / guarnizione	NBR
10 seal / těsnění / guarnizione	NBR
11 cover / Pokrytí / coperchio	stainless steel / nerezová ocel / acciaio inox
12 rear cap / zadní víčko / testata post	aluminium / hliník / alluminio
13 O-ring / O-kroužek	NBR
14 snap ring / snap prsten / seeger	steel / ocel / acciaio

EXTERNAL GRIPPING FORCE  
 VNĚJŠÍ SILA GRIPPINGU  
 FORZA DI PRESA ESTERNA



INTERNAL GRIPPING FORCE  
 VNITŘNÍ GRIPPINGOVÁ SILA  
 FORZA DI PRESA INTERNA

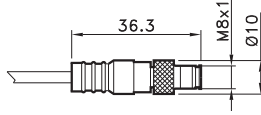
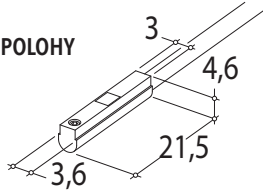




Ø	A	B	C	D	E	G	H	I	J	L	MA	MB	MM	MR	N1	N2	P	PP	QA	QQ	TT	UA
16	30	35	32	2 <sup>+0.2</sup> <sub>0</sub>	3	8	5 <sup>-0.01</sup> <sub>-0.03</sub>	6	2	2 <sup>+0.04</sup> <sub>+0.01</sub>	6	6	3.4	25	10	7	5	7	5	M3x0.5	M3x0.5	6
20	36	39	36	2 <sup>+0.2</sup> <sub>0</sub>	3	10	6 <sup>-0.01</sup> <sub>-0.03</sub>	7	2.5	2 <sup>+0.04</sup> <sub>+0.01</sub>	6	6	3.4	29	13	7	6	8	5	M3x0.5	M5x0.8	6
25	42	41	38	2 <sup>+0.2</sup> <sub>0</sub>	3	12	6 <sup>-0.01</sup> <sub>-0.03</sub>	8	3	2 <sup>+0.04</sup> <sub>+0.01</sub>	8	9	4.5	34	14.5	7.5	7	10	5	M3x0.5	M5x0.8	8
32	52	45	42	2 <sup>+0.2</sup> <sub>0</sub>	3	14	8 <sup>-0.01</sup> <sub>-0.03</sub>	11	4.5	2 <sup>+0.04</sup> <sub>+0.01</sub>	8	9	4.5	44	16	8.5	8	12	8	M4x0.7	M5x0.8	8
40	62	49	46	2 <sup>+0.2</sup> <sub>0</sub>	3	16	8 <sup>-0.01</sup> <sub>-0.03</sub>	12	4.5	3 <sup>+0.04</sup> <sub>+0.01</sub>	9.5	9	5.5	53	17.5	9.5	10	14	8	M4x0.7	M5x0.8	10
50	70	57	54	2 <sup>+0.2</sup> <sub>0</sub>	3	18	10 <sup>-0.01</sup> <sub>-0.03</sub>	14	5	4 <sup>+0.04</sup> <sub>+0.01</sub>	9.5	12	5.5	62	21	9.5	11	17	9	M5x0.8	M5x0.8	10
63	86	68	64	3 <sup>+0.2</sup> <sub>0</sub>	4	24	12 <sup>-0.01</sup> <sub>-0.03</sub>	17	5.5	6 <sup>+0.04</sup> <sub>+0.01</sub>	11	14	6.6	76	24	12	15	23	9	M5x0.8	M5x0.8	12

Ø	UU	X	XA	XX	Y	Z	ZA	ZZ
16	M3x0.5	12.5	2	2 <sup>+0.04</sup> <sub>+0.01</sub>	11	3	1.5	17 <sup>+0.05</sup> <sub>0</sub>
20	M3x0.5	14.5	2	2 <sup>+0.04</sup> <sub>+0.01</sub>	13	3	1.5	21 <sup>+0.05</sup> <sub>0</sub>
25	M4x0.7	17	3	3 <sup>+0.04</sup> <sub>+0.01</sub>	14.5	5	1.5	26 <sup>+0.05</sup> <sub>0</sub>
32	M4x0.7	22	3	3 <sup>+0.04</sup> <sub>+0.01</sub>	19.5	5	2	34 <sup>+0.05</sup> <sub>0</sub>
40	M5x0.8	26.5	4	4 <sup>+0.04</sup> <sub>+0.01</sub>	23.5	6	2	42 <sup>+0.05</sup> <sub>0</sub>
50	M5x0.8	31	4	4 <sup>+0.04</sup> <sub>+0.01</sub>	28	6	2	52 <sup>+0.05</sup> <sub>0</sub>
63	M6x1.0	38	5	5 <sup>+0.04</sup> <sub>+0.01</sub>	34.5	7	2.5	65 <sup>+0.05</sup> <sub>0</sub>

ROUND SWITCH  
 MAGNETICKÝ SNÍMAČ POLOHY  
 SENSORE TONDO



4= black / Černá / nero  
 1= brown / hnědý / hnědýe  
 3= blue / modrý / azzurro

CODE

AR4018010	REED (MT.2,5) / REED (MT.2,5) / REED (MT.2,5)
AR4018020	HALL (MT.2,5) / HALL (MT.2,5) / HALL (MT.2,5)
AR4018110	REED + M8 (CM 30) / REED + M8 / REED + M8 (CM 30)
AR4018120	HALL + M8 (CM 30) / HALL + M8 / HALL + M8 (CM 30)

For technical data see page 1.63

**Technické údaje viz strana 1.63**

Per i dati tecnici vedere pag. 1.63