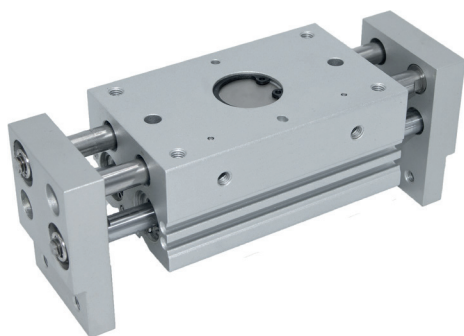


Grippers of PH Series are used to move big components and thanks to the possibility to choose between three different strokes for each size, it's possible to cover several areas of application. The opening and closing movement of gripping jaws is always synchronized thanks to an inside system with rack and pinion, which allows the centring of the item. Several slots have been machined on the main body, to allow the positioning of a magnetic switch.

Úchytky řady PH se používají k pohybu velkých součástí a díky možnosti volby mezi třemi různými tahy pro každou velikost je možné pokrýt několik oblastí aplikace. Otevírací a zavírací pohyb uchopovacích čelistí je vždy synchronizován díky vnitřnímu systému s ozubeným kolem a pastorkem, který umožňuje centrování předmětu. Na hlavním těle bylo zpracováno několik slotů, které umožňují umístění magnetického spínače.

Le pinze della serie PH servono per movimentare pezzi di grandi dimensioni e grazie alla possibilità di scegliere tre diverse Corse per ogni diametro, si posso coprire moltissimi campi di impiego. Il movimento di apertura e chiusura delle dita di presa è sempre sincronizzato grazie ad un sistema interno con pignone e cremagliera, che consente la centratura del pezzo. Sul corpo centrale sono ricavate delle scanalature per il posizionamento dei sensori a scomparsa.



ORDERING CODE / OBJEDNÁVKOVÝ KÓD / CHIAVE DI CODIFICA

PH 3 0 0 0 0

Stroke / Zdvih / Corsa

Ø10	Ø16	Ø20	Ø25	Ø32
20 mm	30 mm	40 mm	50 mm	70 mm
40 mm	60 mm	80 mm	100 mm	120 mm
60 mm	80 mm	100 mm	120 mm	160 mm

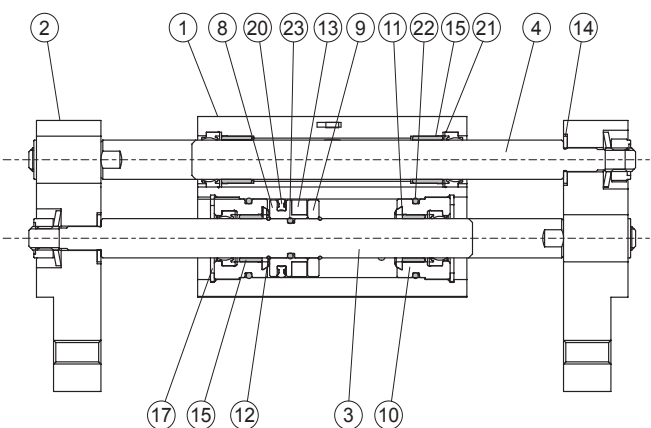
Ø gripper / Ø chapadlo / Ø pinza
10 - 16 - 20 - 25 - 32 mm

3 = Double acting / Dvojčinný / Doppio effetto

TECHNICAL DATA / TECHNICKÁ DATA / DATI TECNICI

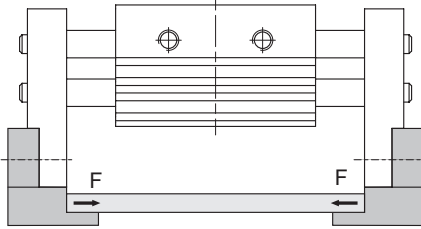
Fluid / Médium / Fluido	Lubricated or non lubricated air / Mazaný nebo nemazaný vzduch / Aria con o senza lubrificazione
Operating temperature range / Rozsah provozních teplot / Temp. di esercizio	-10°C / +60°C
Pressure range / Rozsah tlaku / Pressione di utilizzo	2 - 7 bar
Action tolerance / Akční tolerance / Tolleranza d'azione	± 0.2 mm

COMPONENTS / KOMPONENTY / COMPONENTI

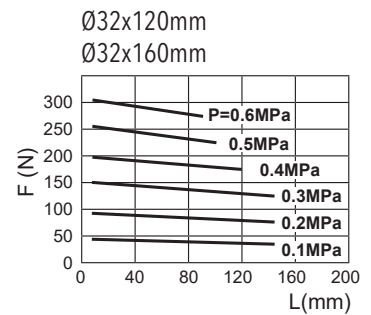
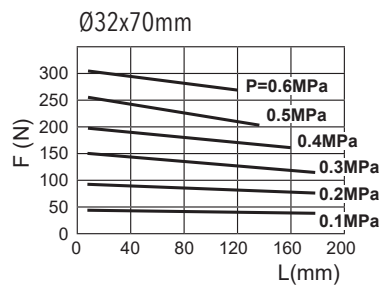
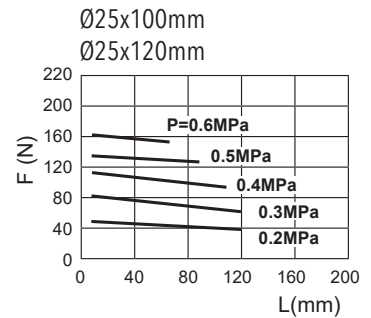
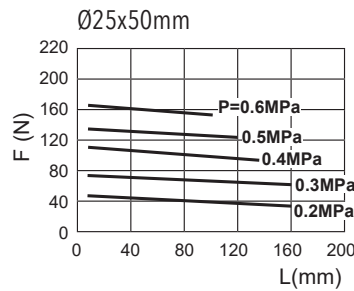
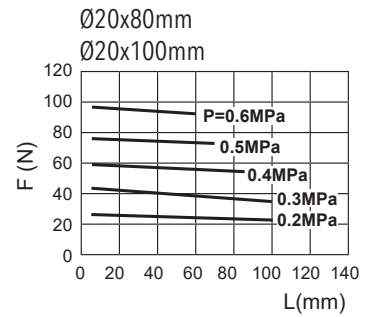
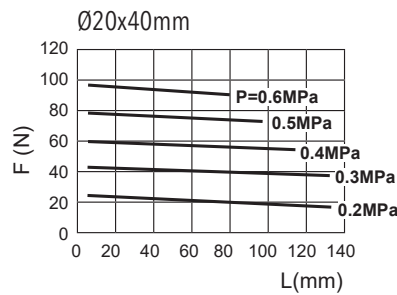
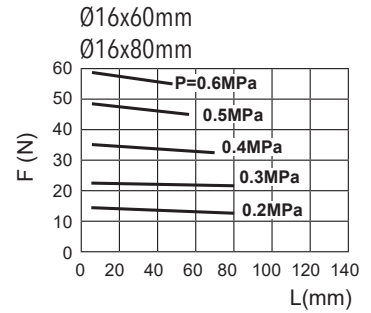
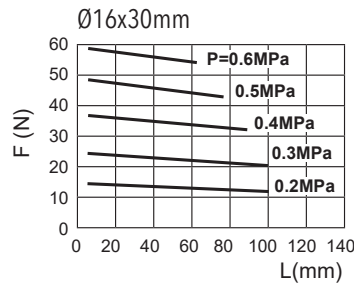
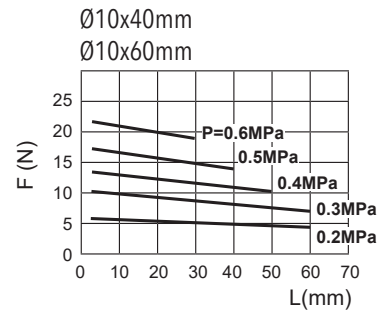
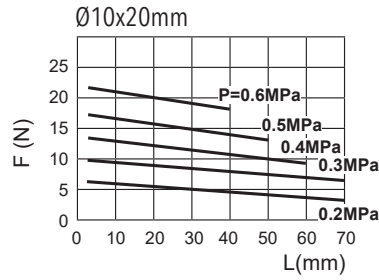
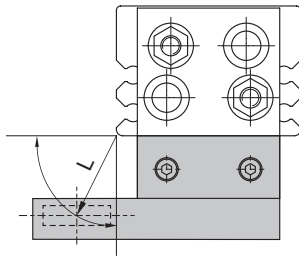


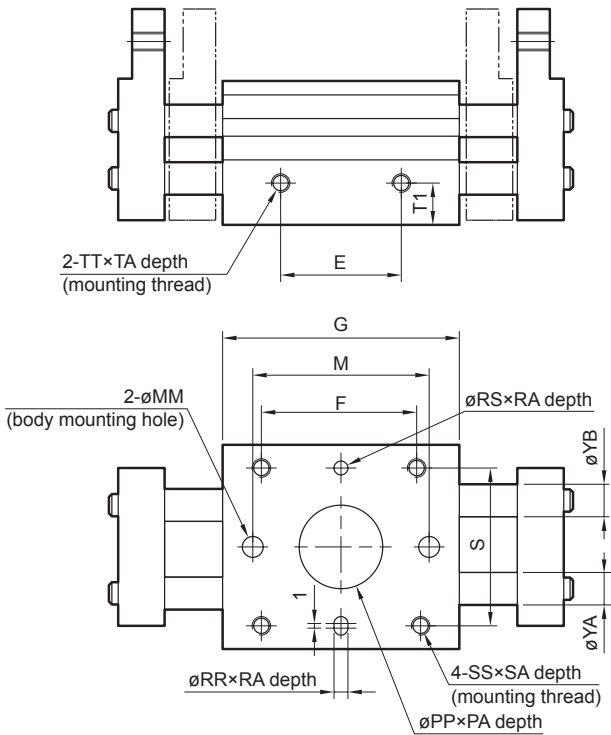
DESCRIPTION / POPIS / DESCRIZIONE	MATERIAL / MATÉRIEL / MATERIALE
1 body / tělesný válec / corpo	aluminium / hliník / alluminio
2 finger / prst / dita	aluminium / hliník / alluminio
3 rod / pístní tyč / stelo	stainless steel / nerezová ocel / acciaio inox
4 rack / nosič / cremagliera	stainless steel / nerezová ocel / acciaio inox
8 piston / píst / pistone	brass / mosaz / ottone
9 piston / píst / pistone	brass / mosaz / ottone
10 cap / zadní víčko / testata	aluminium / hliník / alluminio
11 bumper / nárazník / paracolpi	NBR
12 snap ring / snap prsten / seeger	steel / ocel / acciaio
13 magnet / magnet / magnete	synthetic rubber / syntetická guma / gomma sintetica
14 washer / podložka / rondella	steel / ocel / acciaio
15 guide / průvodec / guida	PTFE
17 snap ring / snap prsten / seeger	steel / ocel / acciaio
20 seal piston / těsnění pístu / guarnizione pist	NBR
21 seal / těsnění / guarnizione	NBR
22 seal / těsnění / guarnizione	NBR

GRIPPING FORCE
 GRIPPINGOVÁ SILA
 FORZA DI PRESA

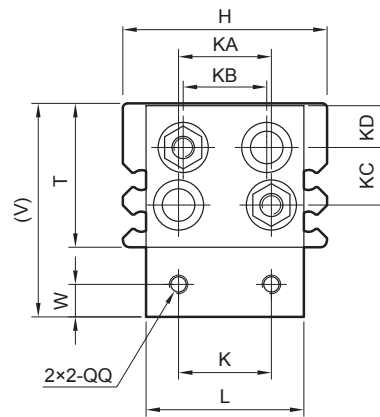
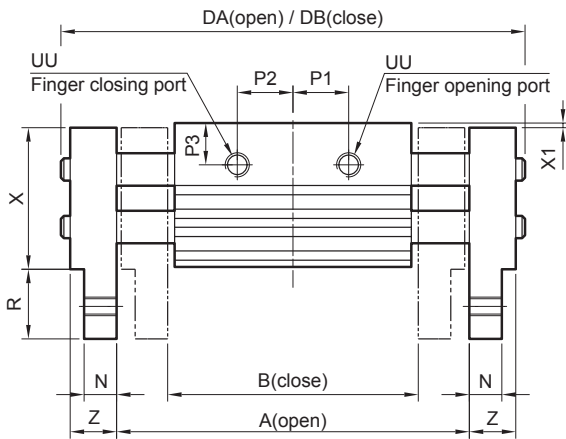


1N=0.102 kgf
 1MPa=10.2 kgf/cm²





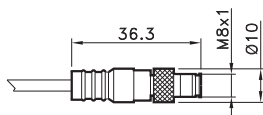
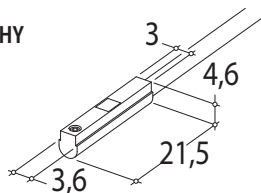
Ø	STROKE	A	B	DA	DB	E	F	G	M	P1	P2
10	20	76	56	100	80	26	36	51	38	11.5	11.5
	40	118	78	142	108	42	52	67	54	19.5	19.5
	60	156	96	180	146	60	70	85	72	28.5	28.5
16	30	98	68	128	98	28	45	60	40	13	13
	60	179	110	200	152	58	75	90	70	25	25
20	80	210	130	240	192	78	95	110	90	35	35
	40	122	82	160	120	38	58	71	54	16	16
	80	222	142	260	194	80	100	113	96	34	34
25	100	262	162	300	234	100	120	133	116	44	44
	50	150	100	196	146	48	70	88	66	19	19
	100	282	182	328	244	102	124	142	120	43	43
32	120	320	200	366	282	120	142	160	138	52	52
	70	220	150	272	202	60	86	110	-	28	28
	120	318	198	370	282	108	134	158	-	52	52
	160	402	242	454	366	152	178	202	-	74	74



Ø	H	K	KA	KB	KC	KD	L	N	MM	PA	PP	P3	QQ	R	RA	RR	RS	S	SA	SS
10	44	20	20	18.2	12.5	8	34	7	4.5	1.5	18	9	M4x0.7	15	3	3	3	34	8	M4x0.7
16	55	25	25	22.6	16.5	9	43	9	5.5	1.5	23	10	M5x0.8	19	3	3	3	42	10	M5x0.8
20	65	30	30	28.2	20	10	54	12.5	6.6	1.5	24	11	M6x1.0	24	4	4	4	52	12	M6x1.0
25	76	40	38	33.2	23.5	11.5	64	14	9	1.5	32	16	M8x1.25	29	4.5	4	4	62	16	M8x1.25
32	82	50	40	32.2	30	14.5	70	15	-	2.5	35	16	M10x1.5	32	8	6	6	64	16	M8x1.25

Ø	T	T1	TA	TT	UU	V	W	X	X1	YA	YB	Z
10	31	9	5	M4x0.7	M5x0.8	46	7	30.5	0.5	6	6	10
16	39	10	7	M5x0.8	M5x0.8	58	8	38.5	0.5	8	8	13
20	46	11	7	M6x1.0	M5x0.8	70	10	45	1	10	10	17
25	52	12.5	7	M8x1.25	M5x0.8	81	12	51	1	12	12	21
32	68	22	11	M8x1.25	1/8	100	15	67	1	14	16	24

ROUND SWITCH
 MAGNETICKÝ SNÍMAČ POLOHY
 SENSORE TONDO



4 = black / **Černá** / nero
 1 = brown / **hnědý** / hnědýe
 3 = blue / **modrý** / azzurro

CODE

AR4018010	REED (MT.2,5) / REED (MT.2,5) / REED (MT.2,5)
AR4018020	HALL (MT.2,5) / HALL (MT.2,5) / HALL (MT.2,5)
AR4018110	REED + M8 (CM 30) / REED + M8 / REED + M8 (CM 30)
AR4018120	HALL + M8 (CM 30) / HALL + M8 / HALL + M8 (CM 30)

For technical data see page 1.63

Technické údaje viz strana 1.63

Per i dati tecnici vedere pag. 1.63