

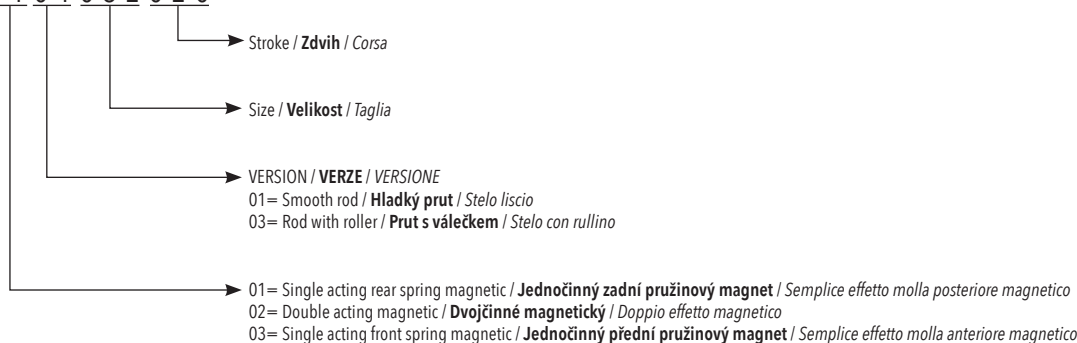
The purpose of stopper cylinders is to stop or block moving parts, such as load on an assembly line. They can also work as a stand-by stopping device, since they exploit the large diameter of the rod, using it as a rotating stop.

Účelem zarážkových válců je zastavit nebo blokovat pohyblivé části, jako je zatížení na montážní lince. Mohou také fungovat jako zastavovací zařízení v pohotovostním režimu, protože využívají velký průměr tyče a používají jej jako čep.

I cilindri stopper hanno lo scopo di arrestare o bloccare parti in movimento, come i carichi all'interno di una linea di montaggio, oppure come blocco di stazionamento, sfruttando il grande diametro dello stelo utilizzandolo come perno.

ORDERING CODE / OBJEDNÁVKOVÝ KÓD / CHIAVE DI CODIFICA

ST 0 1 0 1 0 3 2 0 2 0

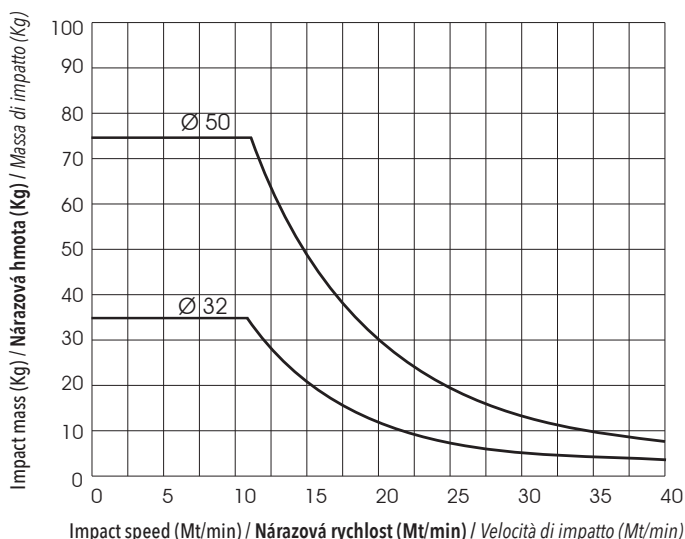


TECHNICAL DATA / TECHNICKÁ DATA / DATI TECNICI

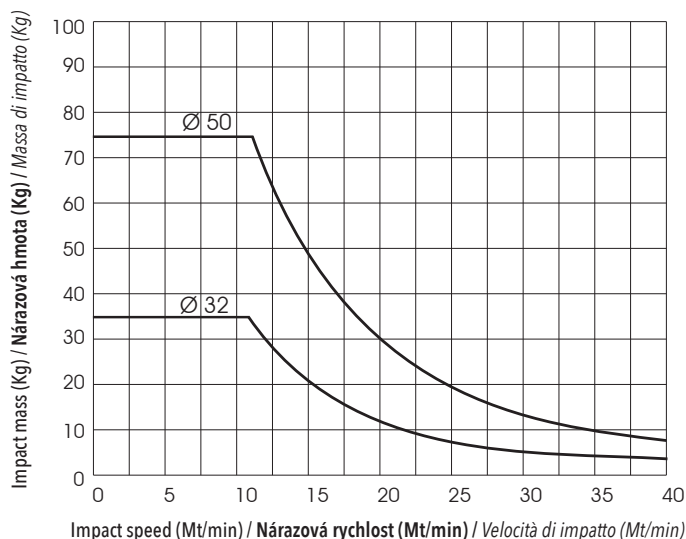
Sizes / Velikosti / Alesaggi	Ø32 - 50
Standard strokes / Zdvih standard / Corse standard	Ø32x20 - Ø50x30
Fluid / Médium / Fluido	Lubricated or non lubricated air / Mazaný nebo nemazaný vzduch / Aria con o senza lubrificazione
Operating temperature range / Rozsah provozních teplot / Temperatura di esercizio	-20°C +80°C
Max operating pressure / Maximální provozní tlak / Pressione massima di esercizio	10 bar
Force / Sily / Forze sviluppate	Technical informations page / Stránka technických informací / Pagina dati tecnici
Air consumption / Spotřeba vzduchu / Consumo aria	Technical informations page / Stránka technických informací / Pagina dati tecnici

LOAD DIAGRAM / ZATÍŽE DIAGRAM / DIAGRAMMA DI CARICO

Smooth rod / **Hladký prut** / Stelo liscio



Rod with roller / **Prut s kolečkem** / Stelo con rullino

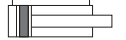


Ø 32 mm

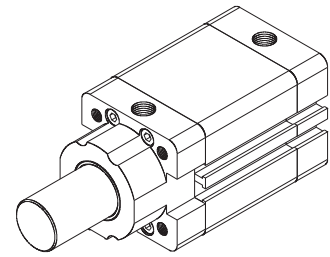
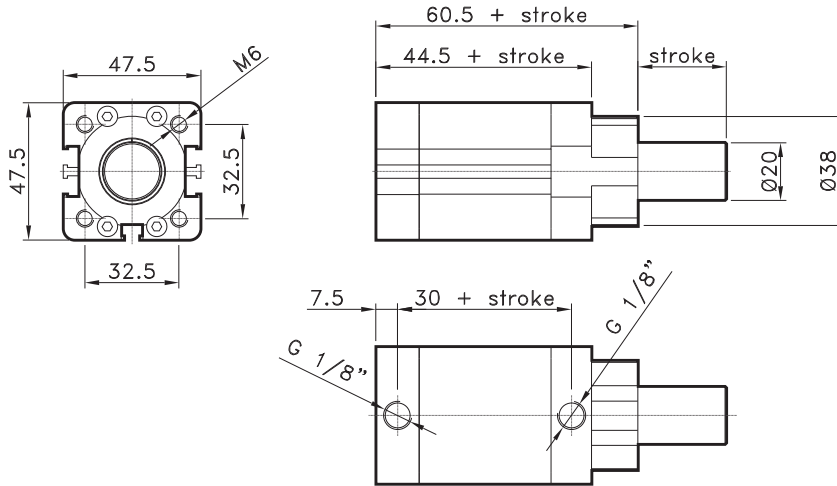
CODE: ST0101032.mm



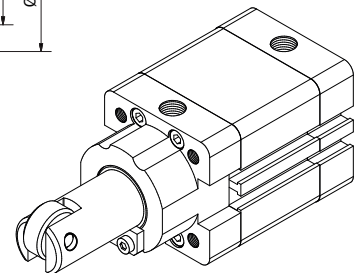
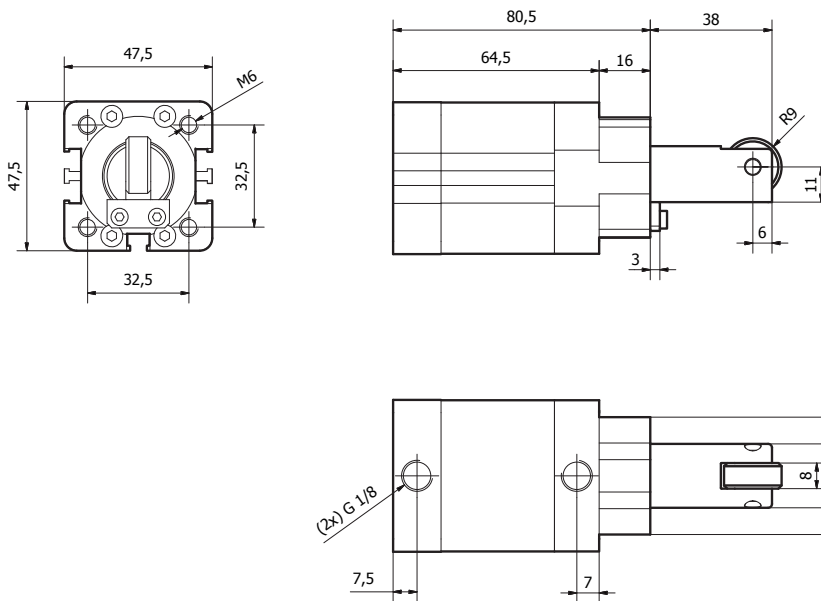
CODE: ST0201032.mm



CODE: ST0301032.mm



Ø 32 mm

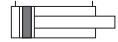


Ø 50 mm

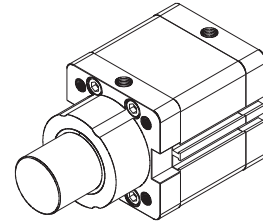
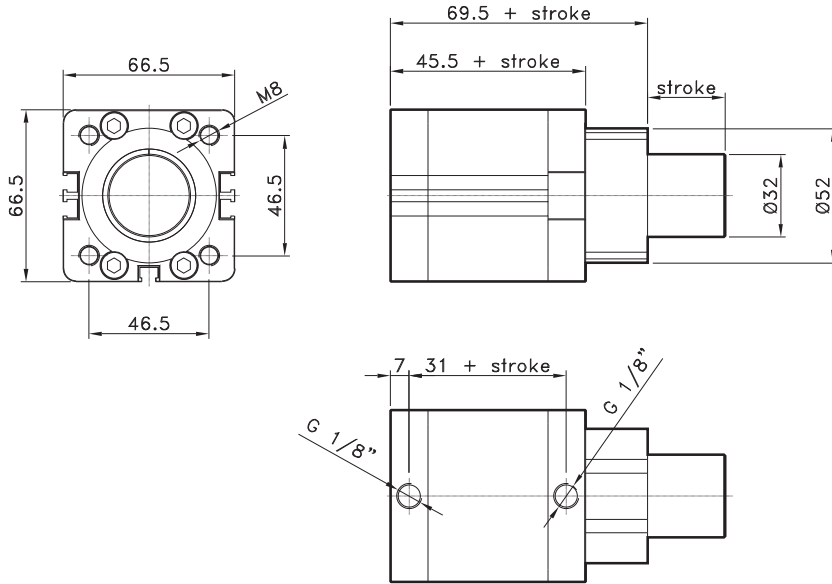
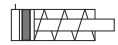
CODE: ST0101050.mm



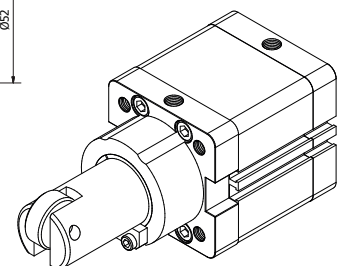
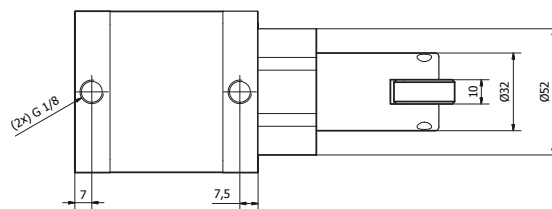
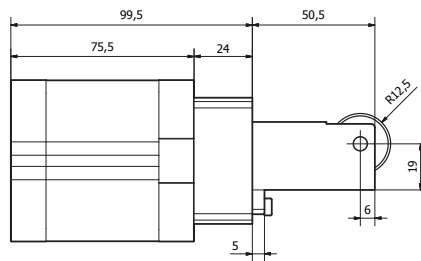
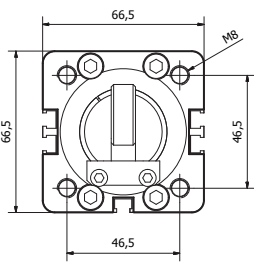
CODE: ST0201050.mm



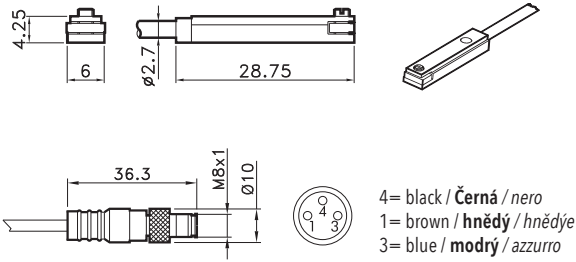
CODE: ST0301050.mm



Ø 50 mm



T SWITCH
MAGNETICKÝ SNÍMAČ POLOHY
 SENSORE AT



CODE

AR4023010	REED (MT.2,5) / REED (MT.2,5) / REED (MT.2,5)
AR4023020	HALL (MT.2,5) / HALL (MT.2,5) / HALL (MT.2,5)
AR4023110	REED + M8 (CM 30) / REED + M8 / REED + M8 (CM 30)
AR4023120	HALL + M8 (CM 30) / HALL + M8 / HALL + M8 (CM 30)

For technical data see page 1.62

Technické údaje viz strana 1.62

Per i dati tecnici vedere pag. 1.62