



CX series stainless steel cylinders, have been designed respecting ISO 15552 norm. They are entirely made in stainless steel and their usage is particularly suitable in harsh atmospheres, like the naval, pharmaceutical and food industry. Bores are between Ø32 to 125 mm.

**Nerezové válce řady CX, byly navrženy s ohledem na normu ISO 15552. Jsou zcela vyrobeny z nerezové oceli a jejich použití je zvláště vhodné v drsném prostředí, jako je námořní, farmaceutický a potravinářský průmysl. Otvory jsou mezi Ø32 až 125 mm.**

*cilindri della serie CX sono stati realizzati rispettando la normativa ISO 15552. Sono interamente realizzati in acciaio inox e particolarmente adatti in ambienti particolari e aggressivi come: navale, farmaceutico, alimentare. Gli alesaggi sono compresi tra Ø32 e 125 mm.*

## ORDERING CODE / OBJEDNÁVKOVÝ KÓD / CHIAVE DI CODIFICA

C X 0 0 1 0 0 0 0 0 0

Stroke / Zdvih / Corsa

Ø cylinder / Ø válec / Ø cilindro

VERSION / VERZE / VERSIONE

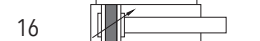
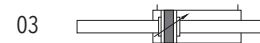
01 = double acting cushioned magnetic / Dvojitý s magnetem a tlumením / doppio effetto ammortizzato magnetico

03 = through rod cushioned magnetic / Dvojitý s průběžnou pístnicí s magnetem a tlumením / stelo passante ammortizzato magnetico

16 = All stainless steel AISI 316, double acting cushioned magnetic / Dvojitý s magnetem a tlumením celonerezový AISI 316 / Tutto in acciaio inox AISI 316, doppio effetto ammortizzato magnetico

17 = All stainless steel AISI 316, through rod cushioned magnetic / Dvojitý s průběžnou pístnicí magnetem a tlumením celonerezový AISI 316 / Tutto in acciaio inox AISI 316, stelo passante ammortizzato magnetico

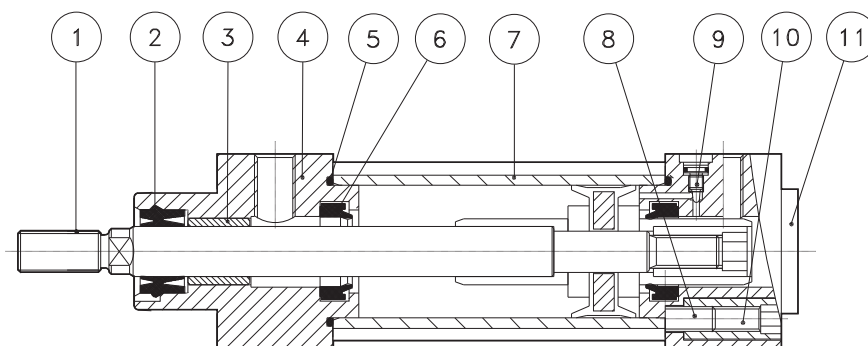
VERSION / VERZE / VERSIONE



## TECHNICAL DATA / TECHNICKÁ DATA / DATI TECNICI

Sizes / Velikosti / Alesaggi	Ø32-40-50-63-80-100-125
Standard strokes / Zdvih standard / Corse standard	mm 25-50-80- 100-125-160-200-250-320-350-400-500-600-700-800-900-1000
Fluid / Médium / Fluido	Lubricated or non lubricated air / Mazaný nebo nemazaný vzduch / Aria con o senza lubrificazione
Operating temperature range / Rozsah provozních teplot / Temperatura di esercizio	Polyurethane / Polyurethan / Poliuretano: -20°C + 80°C Viton: -10°C + 150°C
Max operating pressure / Maximální provozní tlak / Pressione massima di esercizio	10 bar
Force / Síly / Forze sviluppate	Technical informations page / Stránka technických informací / Pagina dati tecnici
Air consumption / Spotřeba vzduchu / Consumo aria	Technical informations page / Stránka technických informací / Pagina dati tecnici

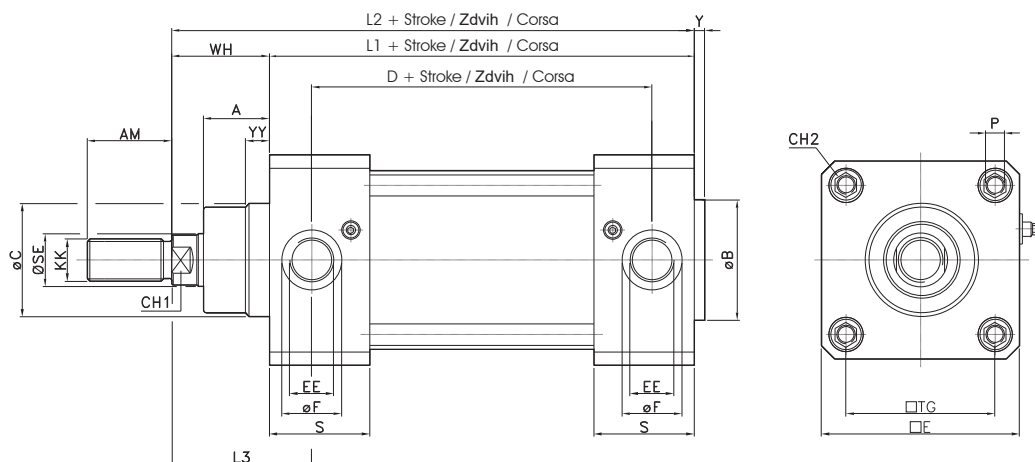
## COMPONENTS / KOMPONENTY / COMPONENTI



DESCRIPTION / POPIS / DESCRIZIONE	MATERIAL / MATÉRIEL / MATERIALE
1 rod / pístní tyč / stelo	stainless steel AISI 316 / nerezová ocel 316 / acciaio inox 316
2 rod seal / těsnění pístní tyče / guarnizione stelo	polyurethane / polyurethan / poliuretano
3 guide bush / vodicí pouzdro / bussola guida	bronze / bronz / bronzo
4 front cap / přední víčko / testata anteriore	stainless steel AISI 304 / ocel AISI 304 / acciaio AISI 304
5 o-ring / O-kroužek	NBR
6 cushion seal / těsnění d'polstrovanýssegment / guarnizione ammortizzo	polyurethane / polyurethan / poliuretano
7 tube / trubka / tube	stainless steel AISI 304 / ocel AISI 304 / acciaio inox 304
8 tie rod / spojovací tyč / spojovací tyče	stainless steel AISI 316 / nerezová ocel 316 / acciaio inox 316
9 regulator cushion screw / tlumení / vite reg. ammortizzo	stainless steel AISI 316 / nerezová ocel 316 / acciaio inox 316
10 fixing cap screw / šroub stanovení víčko / vite serraggio testata	stainless steel AISI 316 / nerezová ocel 316 / acciaio inox 316
11 rear cap / zadní víčko / testata posteriore	stainless steel AISI 304 / ocel AISI 304 / acciaio inox 304

Double acting magnetic cushioned  
**Dvojčinný s magnetem a tlumením**  
 Doppio effetto magnetico ammortizzato

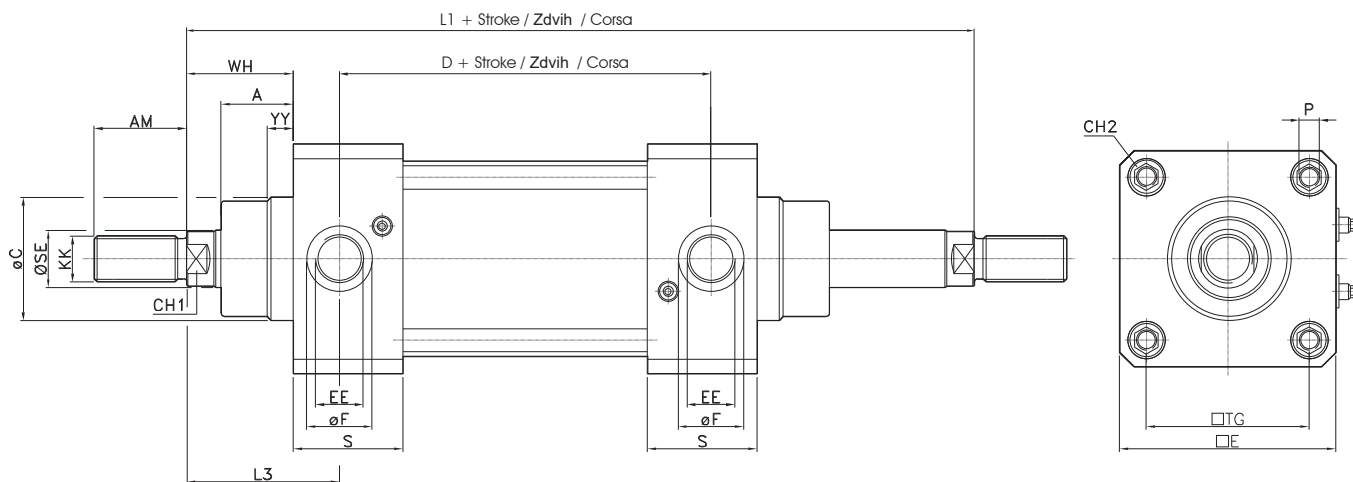
CODE: CX011.Ø.mm



Ø	A	AM	B	C	D	E	EE	F	Y	YY	KK	L1	L2	L3	P	S	SE	TG	WH	CH1	CH2
32	18	22	30	30	67	50	G1/8"	16	4	9	M10x1.25	95	121	39.5	M6	30.8	12	32.5	26	10	6
40	22	24	35	35	77	55	G1/4"	19	4	9	M12x1.25	105	135	44	M6	33	16	38	30	13	6
50	25.5	32	40	40	78	65	G1/4"	19	4	9	M16x1.5	106	143	51	M8	33.7	20	46.5	37	16	8
63	25	32	45	45	89	75	G3/8"	22.7	4	9	M16x1.5	121	158	53	M8	38	20	56.5	37	16	8
80	35	40	45	45	96	95	G3/8"	22.7	4	9	M20x1.5	128	174	62	M10	40	25	72	46	21	10
100	38	40	55	55	102	110	G1/2"	28	4	9	M20x1.5	138	189	69	M10	43.5	25	89	51	21	10
125	46	54	60	60	124	139	G1/2"	28	6	10	M27x2	160	225	83	M12	53	32	110	65	27	12

Double acting magnetic through rod  
**Dvojčinný s průběžnou pístnicí s magnetem a tlumením**  
 Doppio effetto magnetico stelo passante

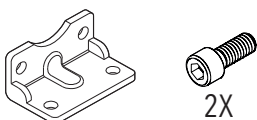
CODE: CX031.Ø.mm



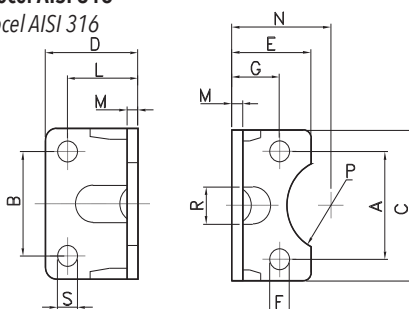
Ø	A	AM	C	D	E	EE	F	YY	KK	L1	L3	P	S	SE	TG	WH	CH1	CH2
32	18	22	30	67	50	G1/8"	16	9	M10x1.25	147	39.5	M6	30.8	12	32.5	26	10	6
40	22	24	35	77	55	G1/4"	19	9	M12x1.25	165	44	M6	33	16	38	30	13	6
50	25.5	32	40	78	65	G1/4"	19	9	M16x1.5	180	51	M8	33.7	20	46.5	37	16	8
63	25	32	45	89	75	G3/8"	22.7	9	M16x1.5	195	53	M8	38	20	56.5	37	16	8
80	35	40	45	96	95	G3/8"	22.7	9	M20x1.5	220	62	M10	40	25	72	46	21	10
100	38	40	55	102	110	G1/2"	28	9	M20x1.5	240	69	M10	43.5	25	89	51	21	10
125	46	54	60	124	139	G1/2"	28	11	M27x2	290	83	M12	53.2	32	110	65	28	12

PEDESTAL  
**BOČNÍ PATKA**  
 PIEDINO

Material: Stainless steel AISI 316  
**Materiál: Nerezová ocel AISI 316**  
 Materiale: Nerezová ocel AISI 316



2X

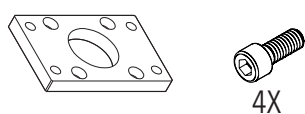


CODE	Ø
AR4169032-V	32
AR4169040-V	40
AR4169050-V	50
AR4169063-V	63
AR4169080-V	80
AR4169100-V	100
AR4169125-V	125

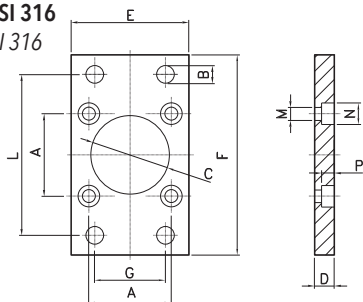
Ø	A	B	C	D	E	F	G	L	M	N	P	R	S
32	32.5	32	45	35	30	7	15.75	24	4	32	15	11	7
40	38	36	52	36	30	7	17	28	4	36	17.5	15	9
50	46.5	45	65	47	36	9	21.75	32	5	45	20	16	9
63	56.5	50	75	45	35	9	21.75	32	5	50	22.5	18	9
80	72	63	95	55	47	11	27	41	6	63	22.5	17	12
100	89	75	115	57	53	11	26.5	41	6	71	27.5	24	14
125	110	90	140	70	70	14	35	45	8	90	30	-	16

FLANGE  
**ČELNÍ (ZADNÍ) DESKA**  
 FLANGIA

Material: Stainless steel AISI 316  
**Materiál: Nerezová ocel AISI 316**  
 Materiale: Nerezová ocel AISI 316



4X

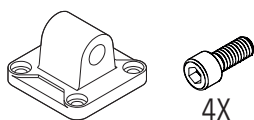


CODE	Ø
AR4168032-V	32
AR4168040-V	40
AR4168050-V	50
AR4168063-V	63
AR4168080-V	80
AR4168100-V	100
AR4168125-V	125

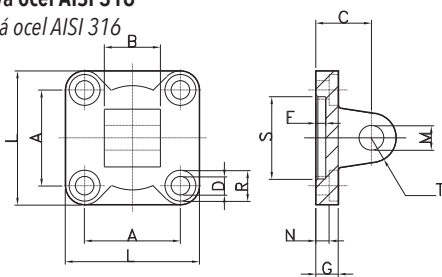
Ø	A	B	C	D	E	F	G	L	M	N	P
32	32.5	7	30	10	45	80	32	64	6.5	10.5	6.5
40	38	9	35	10	52	90	36	72	6.5	10.5	6.5
50	46.5	9	40	12	65	110	45	90	8.5	13.5	8.5
63	56.5	9	45	12	75	120	50	100	8.5	13.5	8.5
80	72	12	45	16	95	150	63	126	10.5	16.5	10.5
100	89	14	55	16	115	170	75	150	10.5	16.5	10.5
125	110	16	60	20	140	205	90	180	13.5	20	12.5

MALE HINGE  
**ZADNÍ KYVNÉ OKO**  
 CERNIERA MASCHIO

Material: Stainless steel AISI 316  
**Materiál: Nerezová ocel AISI 316**  
 Materiale: Nerezová ocel AISI 316



4X

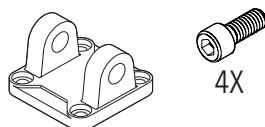


CODE	Ø
AR4165032-V	32
AR4165040-V	40
AR4165050-V	50
AR4165063-V	63
AR4165080-V	80
AR4165100-V	100
AR4165125-V	125

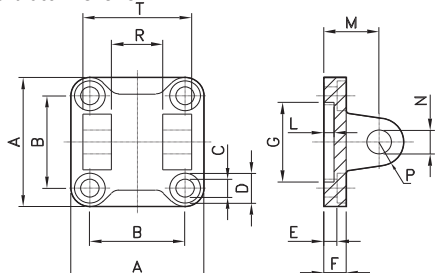
Ø	A	B	C	D	F	G	L	M	N	R	S	T
32	32.5	26	22	6.6	5	9	45	10	5.5	11	30	10
40	38	28	25	6.6	5	9	52	12	5.5	11	35	12
50	46.5	32	27	9	5	11	65	12	6.5	15	40	12
63	56.5	40	32	9	5	11	75	16	6.5	15	45	16
80	72	50	36	11	5	14	95	16	10	18	45	16
100	89	60	41	11	5	14	115	20	10	18	55	20
125	110	70	50	14	7	20	140	25	10	20	60	25

FEMALE HINGE  
**ZADNÍ KYVNÉ LOŽISKO**  
 CERNIERA FEMMINA

Material: Stainless steel AISI 316  
**Materiál: Nerezová ocel AISI 316**  
 Materiale: Nerezová ocel AISI 316



4X

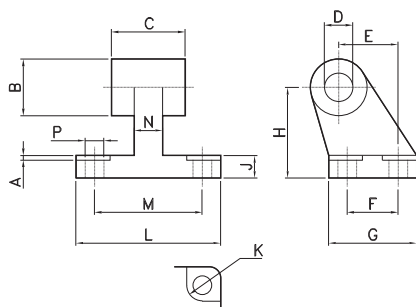
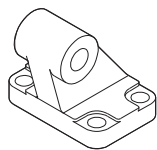


CODE	Ø
AR4164032-V	32
AR4164040-V	40
AR4164050-V	50
AR4164063-V	63
AR4164080-V	80
AR4164100-V	100
AR4164125-V	125

Ø	A	B	c	D	E	F	G	L	M	N	p	R	T
32	45	32.5	6.6	11	5.5	9	30	5	22	10	10	26	45
40	52	38	6.6	11	5.5	9	35	5	25	12	12	28	52
50	65	46.5	9	15	6.5	11	40	5	27	12	12	32	60
63	75	56.5	9	15	6.5	11	45	5	32	16	16	40	70
80	95	72	11	18	10	14	45	5	36	16	16	50	90
100	115	89	11	18	10	14	55	5	41	20	20	60	110
125	140	110	14	20	10	20	60	7	50	25	25	70	130

SQUARE JOINT  
**ČTVERCOVÝ KLOUB**  
 ARTICOLAZIONE A SQUADRA

Material: Stainless steel AISI 316  
**Materiál: Nerezová ocel AISI 316**  
 Materiale: Nerezová ocel AISI 316

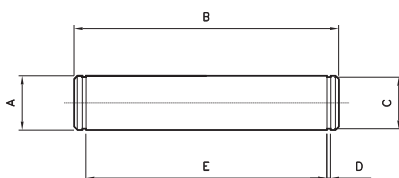
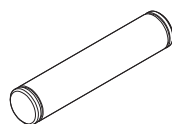


CODE	Ø
AR4166032	32
AR4166040	40
AR4166050	50
AR4166063	63
AR4166080	80
AR4166100	100
AR4166125	125

Ø	A	B	C	D	E	F	G	H	J	K	L	M	N	P
32	1.6	20	26	10	21	18	31	32	8	11	51	38	10	6.6
40	1.6	22	28	12	24	22	35	36	10	11	54	41	15	6.6
50	1.6	26	32	12	33	30	45	45	12	15	65	50	16	9
63	1.6	30	40	16	37	35	50	50	14	15	67	52	16	9
80	2.5	30	50	16	47	40	60	63	14	18	86	66	20	11
100	2.5	38	60	20	55	50	70	71	17	18	96	76	20	11
125	3.2	45	70	25	70	60	90	90	20	20	124	94	30	14

PIVOT FOR FEMALE HINGE  
**ČEP**  
 PERNO PER CERNIERA FEMMINA

Material: Stainless steel AISI 316  
**Materiál: Nerezová ocel AISI 316**  
 Materiale: Nerezová ocel AISI 316

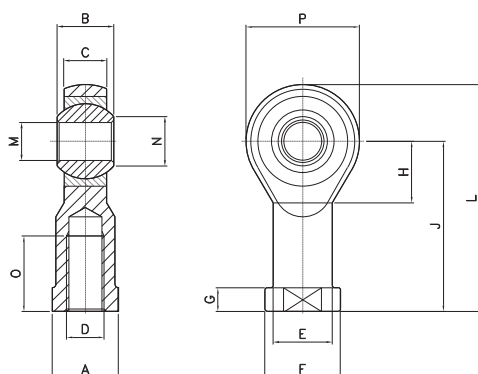


CODE	Ø
AR4167032	32
AR4167040	40
AR4167050	50
AR4167063	63
AR4167080	80
AR4167100	100
AR4167125	125

Ø	A	B	C	D	E
32	10	53	9.6	1.1	46
40	12	60	11.5	1.1	53
50	12	68	11.5	1.1	61
63	16	78	15.2	1.1	71
80	16	98	15.2	1.1	91
100	20	118	19	1.3	111
125	25	139	23.9	1.3	132

ROD ENDS  
**OKO KYVNÉ**  
 TESTA A SNODO

Material: Stainless steel AISI 316  
**Materiál: Nerezová ocel AISI 316**  
 Materiale: Nerezová ocel AISI 316

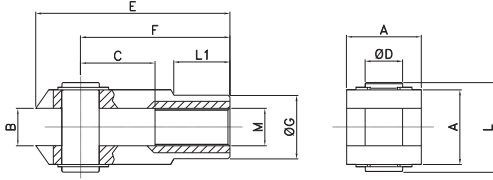
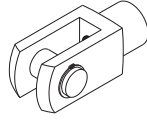


CODE	Ø
AR4250	32
AR4251	40
AR4252	50-63
AR4253	80-100
AR4254	125

Ø	A	B	C	D	E	F	G	H	J	L	M	N	O	P
32	17	14	10.5	M10x1.25	15	19	6.5	15	43	57	10	12.9	20	28
40	19	16	12	M12x1.25	17.5	22	6.5	17	50	66	12	15.4	22	32
50-63	22	21	15	M16x1.5	22	27	8	23	64	85	16	19.3	28	42
80-100	30	25	18	M20x1.5	27.5	34	10	27	77	102	20	24.3	33	50
125	41	37	25	M27x2	40	50	15	36	110	145	30	34.8	51	70

YOKE WITH PIVOT  
**VIDLICE NA PÍSTNICI**  
 FORCELLA CON PERNO

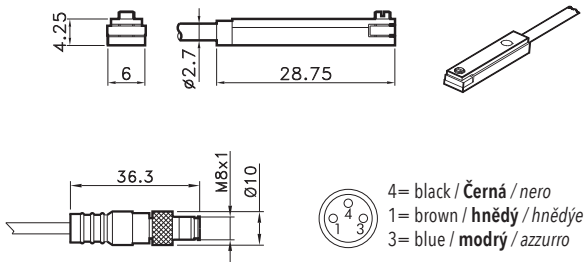
Material: Stainless steel AISI 303  
**Materiál: Nerezová ocel AISI 303**  
 Materiale: Nerezová ocel AISI 303



CODE	Ø
AR4218	32
AR4219	40
AR4220	50-63
AR4221	80-100
AR4222	125

Complete of pivot and seeger  
**Kompletní pivot a seeger**  
 Completo di perno e seeger

Ø	A	B	C	D	E	F	G	M	L	L1
32	20	10	20	10	52	40	18	M10x1.25	25	15
40	24	12	24	12	62	48	20	M12x1.25	30	18
50/63	32	16	32	16	83	64	26	M16x1.5	39	24
80/100	40	20	40	20	105	80	34	M20x1.5	48	30
125	55	30	54	30	148	110	48	M27x2	65	38



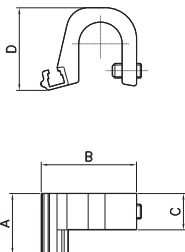
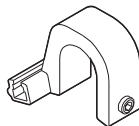
T SWITCH / **MAGNETICKÝ SNÍMAČ POLOHY** / *SENSORE AT*

CODE	
AR4023010	REED (MT.2,5) / <b>REED (MT.2,5)</b> / REED (MT.2,5)
AR4023020	HALL (MT.2,5) / <b>HALL (MT.2,5)</b> / HALL (MT.2,5)
AR4023110	REED + M8 (CM 30) / <b>REED + M8</b> / REED + M8 (CM 30)
AR4023120	HALL + M8 (CM 30) / <b>HALL + M8</b> / HALL + M8 (CM 30)

For technical data see page 1.62  
**Technické údaje viz strana 1.62**  
 Per i dati tecnici vedere pag. 1.62

ADAPTOR FOR T SWITCH  
**DRŽÁK PRO SNÍMAČ POLOHY**  
 ADATTATORE SENSORE AT

Material: Aluminium  
**Materiál: hliník**  
 Materiale: Alluminio



CODE	Ø
AR420032	32-40
AR420050	50-63
AR420080	80-100
AR4200125	125

Ø	A	B	C	D
32-40	25	30	15	20
50-63	25	35	15	26
80-100	25	38	15	30
125	25	40	15	35