

CT series round cylinders allows the possibility to combine bigger bores, while keeping dimensions smaller than a square cylinder. Both ends of CT's round cylinders are fixed to the tubes thanks to a rolling process. They are available in different versions from diameter 32 to 63 mm: single or double acting, magnetic, cushioned. Fixing accessories are available and special executions can be carried out.

**Kulaté válce řady CT umožňují kombinovat větší otvory a přitom udržovat rozměry menší než čtvercové válce. Oba konce kruhových válců CT jsou fixovány k trubkám díky procesu válcování. Jsou k dispozici v různých verzích od průměru 32 do 63 mm: jednočinné nebo dvojitě, magnetické, polstrované. K dispozici je upevňovací příslušenství a lze provést speciální provedení.**

*I cilindri rotondi della serie CT, consentono la possibilità di combinare diametri più grande, mantenendo ingombri più contenuti dei cilindri a sezione quadrata. Le testate dei cilindri tondi di POS sono fissate alla camicia mediante rullatura e sono realizzabili in differenti versioni dal diametro 32 al 63 mm: semplice e doppio effetto, magnetici, ammortizzati. Sono inoltre disponibili i relativi accessori di fissaggio ed esecuzioni speciali a disegno.*



## ORDERING CODE / OBJEDNÁVKOVÝ KÓD / CHIAVE DI CODIFICA

CT 0 0 1 0 0 0 0 0 0

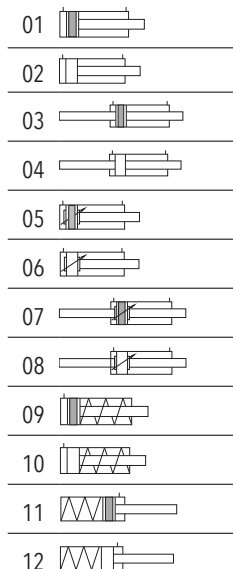
Stroke / Zdvih / Corsa

Ø cylinder / Ø válec / Ø cilindro

VERSION / VERZE / VERSIONE

- 01 = double acting magnetic / **Dvojitě magnetický** / doppio effetto magnetico
- 02 = double acting not magnetic / **Dvojitě bez magnetu** / doppio effetto non magnetico
- 03 = d.a. through rod magnetic / **Dvojitě s průběžnou pístnicí s magnetem** / d.e. stelo passante magnetico
- 04 = d.a. through rod not magnetic / **Dvojitě s průběžnou pístnicí bez magnetu** / d.e. stelo passante non magnetico
- 05 = d.a. with cushioned magnetic / **Dvojitě s tlumením a magnetem** / d.e. con ammortizzo magnetico
- 06 = d.a. with cushioned not magnetic / **Dvojitě s tlumením bez magnetu** / d.e. con ammortizzo non magnetico
- 07 = d.a. through rod magnetic / **Dvojitě s průběžnou pístnicí a magnetem** / d.e. stelo passante con ammortizzo magnetico
- 08 = d.a. through rod not magnetic / **Dvojitě s průběžnou pístnicí bez magnetu** / d.e. stelo passante con ammortizzo non mag.
- 09 = single acting front spring magnetic / **Jednočinně s přední pružinou a magnetem** / semplice effetto molla anteriore magnetico
- 10 = single acting front spring not magnetic / **Jednočinně s přední pružinou bez magnetu** / semplice effetto molla anteriore non mag.
- 11 = single acting rear spring magnetic / **Jednočinně se zadní pružinou s magnetem** / semplice effetto molla posteriore magnetico
- 12 = single acting rear spring not magnetic / **Jednočinně se zadní pružinou bez magnetu** / semplice effetto molla posteriore non mag.

## VERSION / VERZE / VERSION



## STANDARD STROKES / STANDARDNÍ ZDVIHY / CORSE STANDARD

Double acting / **Dvojitě** / Doppio effetto

**Ø32** mm 25-50-80-100-125-160-200-250-320-400-500

**Ø40** mm 25-50-80-100-125-160-200-250-320-400-500

**Ø50** mm 25-50-80-100-125-160-200-250-320-400-500

**Ø63** mm 25-50-80-100-125-160-200-250-320-400-500

Single acting / **Jedný efekt** / Semplice effetto

**Ø32** mm 10-25-50

**Ø40** mm 10-25-50

**Ø50** mm 10-25-50

**Ø63** mm 10-25-50

## TECHNICAL DATA / TECHNICKÁ DATA / DATI TECNICI

Fluid / Médium / Fluido

Lubricated or non lubricated air / **Mazaný nebo nemazaný vzduch** / Aria con o senza lubrificazione

Operating temperature range / **Rozsah provozních teplot** / Temp. di esercizio

-20°C / +80°C

Max operating pressure / **Maximální provozní tlak** / Pressione massima di esercizio

10 bar

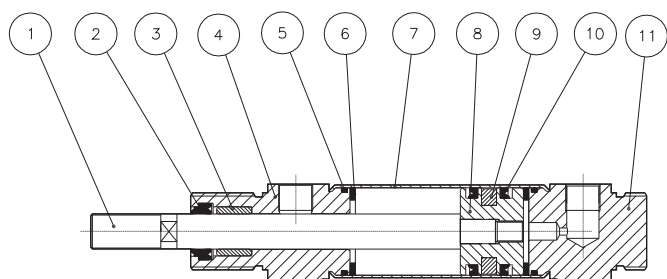
Force / **Sily** / Forze sviluppate

Technical informations page / **Stránka technických informací** / Pagina dati tecnici

Air consumption / **Spotřeba vzduchu** / Consumo aria

Technical informations page / **Stránka technických informací** / Pagina dati tecnici

## COMPONENTS / KOMPONENTY / COMPONENTI



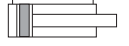
DESCRIPTION / **POPIS** / DESCRIZIONE

MATERIAL / **MATERIÁL** / MATERIALE

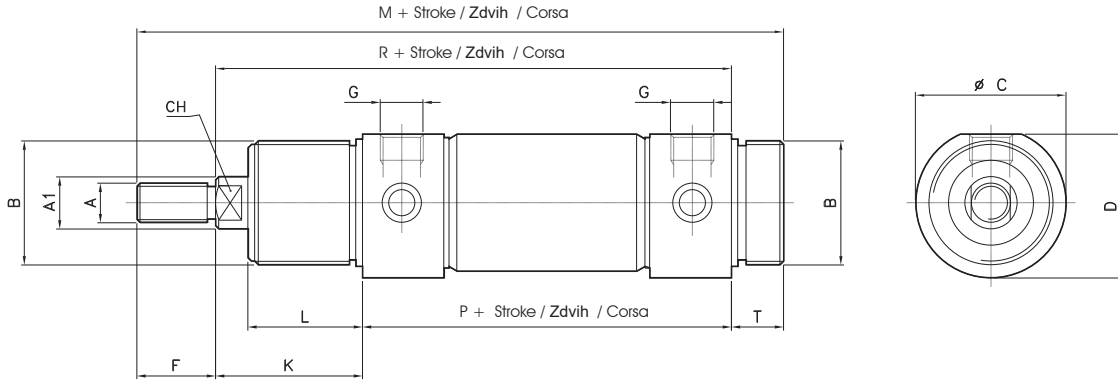
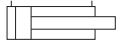
1	rod / <b>pístní tyč</b> / stelo	stainless steel AISI 303 / <b>ocel AISI 303</b> / acciaio inox 303
2	rod seal / <b>pístní tyče</b> / guarnizione stelo	polyurethane / <b>polyurethan</b> / poliuretano
3	guide bush / <b>vodící pouzdro</b> / bussola guida	bronze / <b>bronz</b> / bronzo
4	front cap / <b>zadní víčko antérieur</b> / testata ant.	aluminium / <b>hliník</b> / alluminio
5	o-ring / <b>O-kroužek</b>	NBR
6	bumper / <b>butoir</b> / paracolpo	NBR
7	tube / <b>trubka</b> / tube	stainless steel AISI 304 / <b>ocel AISI 304</b> / acciaio inox 304
8	piston / <b>píst</b> / pistone	brass / <b>mosaz</b> / ottone
9	magnet / <b>magnet</b> / magnete	plastroferrite
10	seal piston / <b>těsnění piston</b>	polyurethane / <b>polyurethan</b> / poliuretano
11	rear cap / <b>zadní víčko postérieur</b>	aluminium / <b>hliník</b> / alluminio

Double acting  
**Dvojčinný**  
*Doppio effetto*

CODE: CT011.Ø.mm



CODE: CT021.Ø.mm



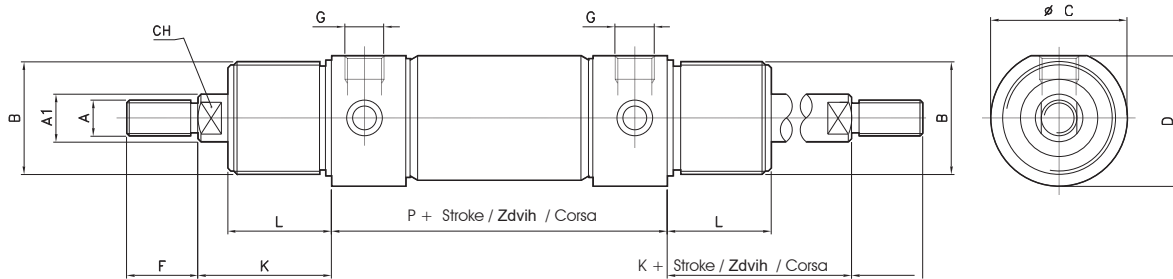
Ø	A	A1	B	C	D	F	G	K	L	M	P	R	T	CH
32	M10x1.25	12	M30x1.5	38	36.5	20	1/8" GAS	38	30	168	96	134	14	10
40	M12x1.25	16	M38x1.5	46	44	24	1/4" GAS	45	35	198	113	158	16	12
50	M16x1.5	20	M45x1.5	57	55	32	1/4" GAS	50	38	220	120	170	18	16
63	M16x1.5	20	M45x1.5	70	67.5	32	3/8" GAS	50	38	224	124	174	18	16

Double acting through rod  
**Dvojčinný s průběžnou pístnicí**  
*Doppio effetto stelo passante*

CODE: CT031.Ø.mm



CODE: CT041.Ø.mm



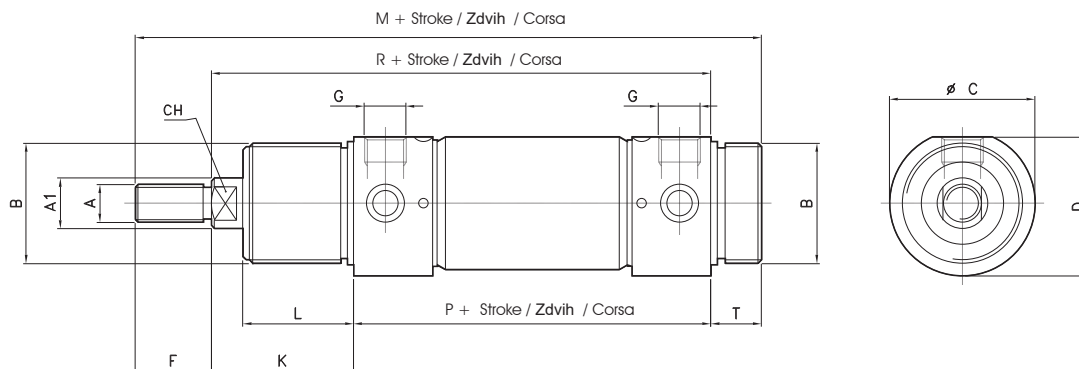
Ø	A	A1	B	C	D	F	G	K	L	P	CH
32	M10x1.25	12	M30x1.5	38	36.5	20	1/8" GAS	38	30	96	10
40	M12x1.25	16	M38x1.5	46	44	24	1/4" GAS	45	35	113	12
50	M16x1.5	20	M45x1.5	57	55	32	1/4" GAS	50	38	120	16
63	M16x1.5	20	M45x1.5	70	67.5	32	3/8" GAS	50	38	124	16

Double acting with cushioning  
**Dvojčinný s tlumením**  
*Doppio effetto con ammortizzo*

CODE: CT051.Ø.mm



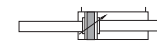
CODE: CT061.Ø.mm



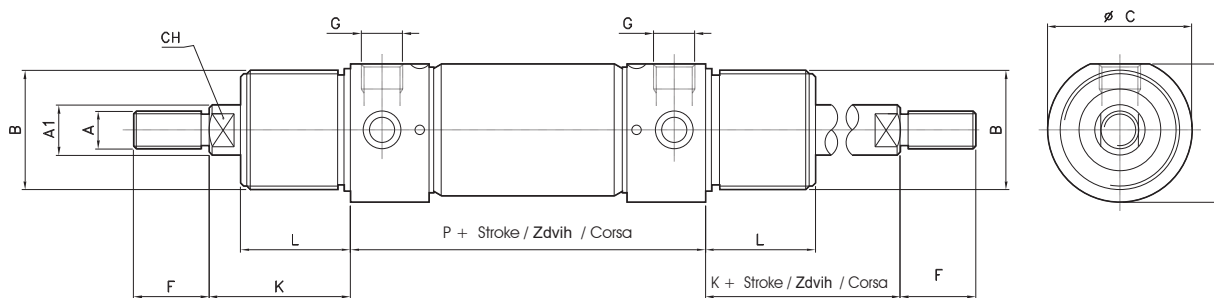
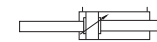
Ø	A	A1	B	C	D	F	G	K	L	M	P	R	T	CH
32	M10x1.25	12	M30x1.5	38	36.5	20	1/8" GAS	38	30	168	96	134	14	10
40	M12x1.25	16	M38x1.5	46	44	24	1/4" GAS	45	35	198	113	158	16	12
50	M16x1.5	20	M45x1.5	57	55	32	1/4" GAS	50	38	220	120	170	18	16
63	M16x1.5	20	M45x1.5	70	67.5	32	3/8" GAS	50	38	224	124	174	18	16

Double acting through rod with cushioning  
**Dvojčinný s průběžnou pístnicí a tlumením**  
*Doppio effetto asta passante con ammortizzo*

CODE: CT071.Ø.mm



CODE: CT081.Ø.mm



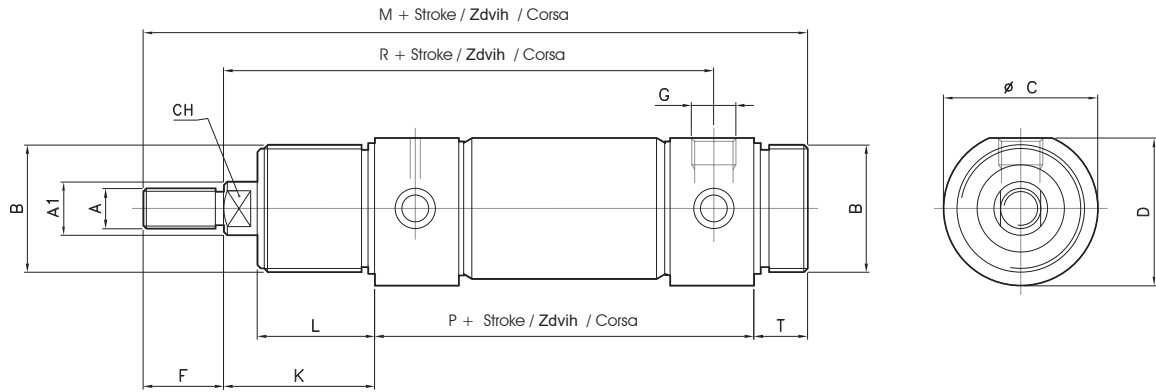
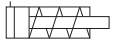
Ø	A	A1	B	C	D	F	G	K	L	P	CH
32	M10x1.25	12	M30x1.5	38	36.5	20	1/8" GAS	38	30	96	10
40	M12x1.25	16	M38x1.5	46	44	24	1/4" GAS	45	35	113	12
50	M16x1.5	20	M45x1.5	57	55	32	1/4" GAS	50	38	120	16
63	M16x1.5	20	M45x1.5	70	67.5	32	3/8" GAS	50	38	124	16

Single acting front spring  
**Jednočinné s přední pružinou**  
*Semplice effetto molla anteriore*

CODE: CT091.Ø.mm



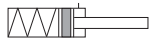
CODE: CT101.Ø.mm



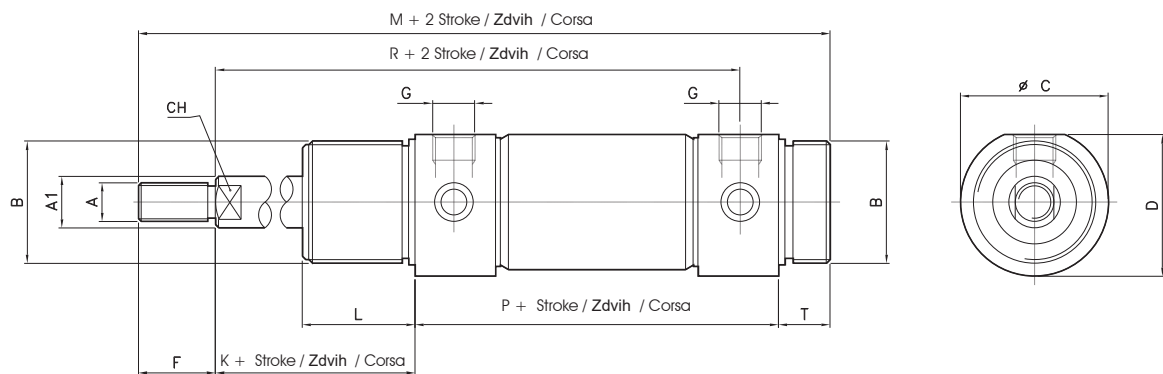
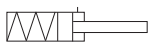
Ø	A	A1	B	C	D	F	G	K	L	M	P	R	T	CH
32	M10x1.25	12	M30x1.5	38	36.5	20	1/8" GAS	38	30	168	96	134	14	10
40	M12x1.25	16	M38x1.5	46	44	24	1/4" GAS	45	35	198	113	158	16	12
50	M16x1.5	20	M45x1.5	57	55	32	1/4" GAS	50	38	220	120	170	18	16
63	M16x1.5	20	M45x1.5	70	67.5	32	3/8" GAS	50	38	224	124	174	18	16

Single acting rear spring  
**Jednočinné se zadní pružinou**  
*Semplice effetto molla posteriore*

CODE: CT111.Ø.mm



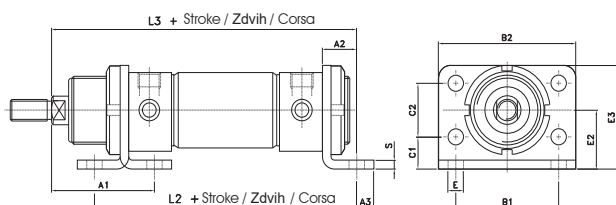
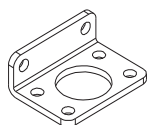
CODE: CT121.Ø.mm



Ø	A	A1	B	C	D	F	G	K	L	M	P	R	T	CH
32	M10x1.25	12	M30x1.5	38	36.5	20	1/8" GAS	38	30	168	96	125	14	10
40	M12x1.25	16	M38x1.5	46	44	24	1/4" GAS	45	35	198	113	146	16	12
50	M16x1.5	20	M45x1.5	57	55	32	1/4" GAS	50	38	220	120	158	18	16
63	M16x1.5	20	M45x1.5	70	67.5	32	3/8" GAS	50	38	224	124	163	18	16

PEDESTAL  
BOČNÍ PATKA  
PIEDINO

Material: Steel  
Materiál: Ocel  
Materiale: Acciaio

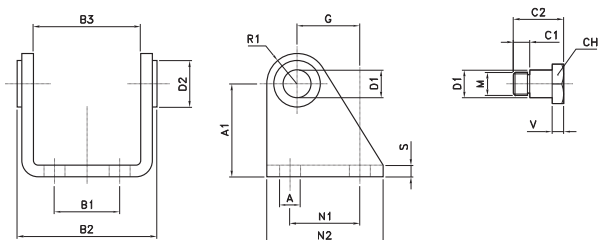
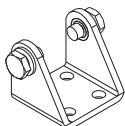


CODE	Ø
AR4202032	32
AR4202040	40
AR4202050	50
AR4202063	63

Ø	A1	A2	A3	B1	B2	C1	C2	E	E2	E3	L2	L3	S
32	48	14	7	52	66	14	28	7	28	49	124	148	4
40	60	20	10	60	80	18	30	9	33	58	153	178	5
50	64	20	10	70	90	20	40	9	40	70	160	190	6
63	65	20	10	76	96	20	50	9	45	80	164	195	6

FEMALE HINGE  
ZADNÍ KYVNÉ LOŽISKO  
CERNIERA FEMMINA

Material: Steel  
Materiál: Ocel  
Materiale: Acciaio

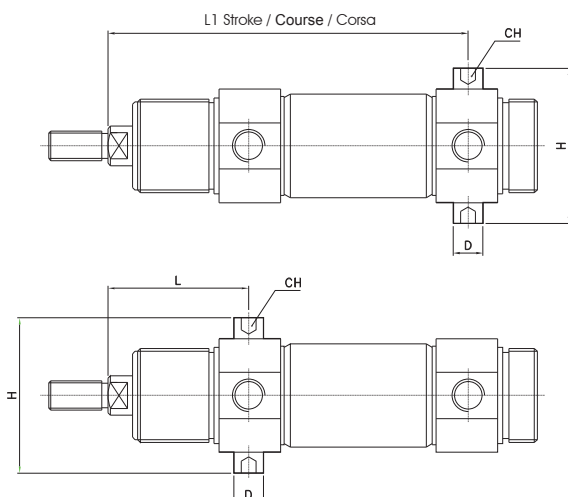


CODE	Ø
AR4203032	32
AR4203040	40
AR4203050	50
AR4203063	63

Ø	D1	D2	A	A1	B1	B2	B3	G	N1	N2	R1	S	C1	C2	CH	V	M
32	10	15	7	35	20	50.1	38.1	20	24	40	12	4	6	18	13	4	M8x1
40	12	20	9	40	28	60.1	46.1	27	30	50	13	5	7	21.6	17	5	M10x1
50	14	23	9	45	36	74.1	57.1	30	34	54	14	6	9	26.4	19	6	M12x1.5
63	16	23	9	50	42	88.1	70.1	34	35	65	16	6	15	34	19	6	M14x1.5

PIVOT FOR HINGE  
PIN PRO ZÁVĚS  
PERNI PER CERNIERA

Material: Steel  
Materiál: Ocel  
Materiale: Acciaio

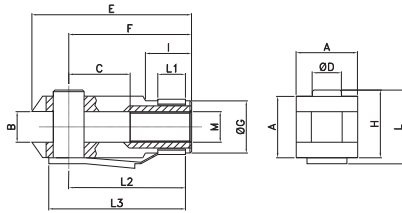
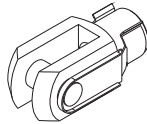


CODE	Ø
AR4204032	32
AR4204040	40
AR4204050	50
AR4204063	63

Ø	D	CH	H	L	L1
32	10	5	51	47	125
40	12	6	61	57	146
50	14	6	75	62	158
63	16	8	90	64	161

YOKE WITH CLIPS  
**VIDLICE NA PÍSTNICI**  
FORCELLA CON CLIPS

Material: Steel  
**Materiál: Ocel**  
Materiale: Acciaio

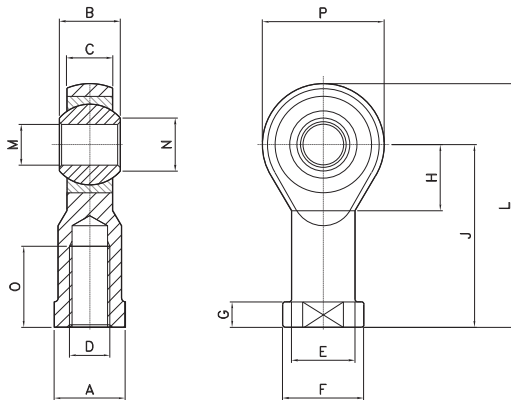


CODE	Ø
AR40673	32
AR40674	40
AR40675	50-63

Ø	A	B	C	D	E	F	G	H	I	M	L	L1	L2	L3
32	20	10	20	10	52	40	18	23	15	M10x1.25	26	10	39	46
40	24	12	24	12	62	48	20	28	18	M12x1.25	32	12	47	55
50-63	32	16	32	16	83	64	26	36	24	M16x1.5	40	14	62	72

ROD ENDS  
**OKO KYVNÉ**  
TESTA A SNODO

Material: Steel  
**Materiál: Ocel**  
Materiale: Acciaio

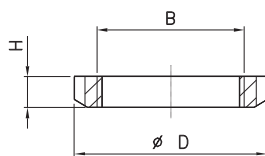
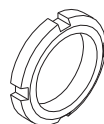


CODE	Ø
AR40660	32
AR40662	40
AR40665	50-63

Ø	A	B	C	D	E	F	G	H	J	L	M	N	O	P
32	17	14	10.5	M10x1.25	15	19	6.5	15	43	57	10	12.9	20	28
40	19	16	12	M12x1.25	17.5	22	6.5	17	50	66	12	15.4	22	32
50-63	22	21	15	M16x1.5	22	27	8	23	64	85	16	19.3	28	42

NUT  
**MATICE**  
GHIERA

Material: Steel  
**Materiál: Ocel**  
Materiale: Acciaio

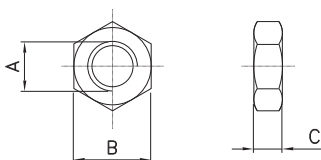


CODE	Ø
AR4205032	32
AR4205040	40
AR4205050	50-63

Ø	B	D	H
32	M30x1.5	45	7
40	M38x1.5	50	8
50	M45x1.5	58	9
63	M45x1.5	58	9

NUT FOR ROD  
**MATICE NA PÍSTNICI**  
DADO PER STELO

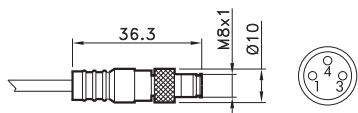
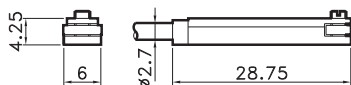
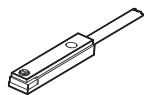
Material: Steel  
**Materiál: Ocel**  
Materiale: Acciaio



CODE	Ø
DAD10x1.25	32
DAD12x1.25	40
DAD16x1.25	50-63

Ø	A	B	C
32	M10x1.25	17	8
40	M12x1.25	19	6
50-63	M16x1.5	22	6

T SWITCH  
MAGNETICKÝ SNÍMAČ POLOHY  
SENSORE AT



4= black / Černá / nero  
1= brown / hnědý / hnědýe  
3= blue / modrý / azzurro

CODE

AR4023010 REED (MT.2,5) / REED (MT.2,5) / REED (MT.2,5)

AR4023020 HALL (MT.2,5) / HALL (MT.2,5) / HALL (MT.2,5)

AR4023110 REED + M8 (CM 30) / REED + M8 / REED + M8 (CM 30)

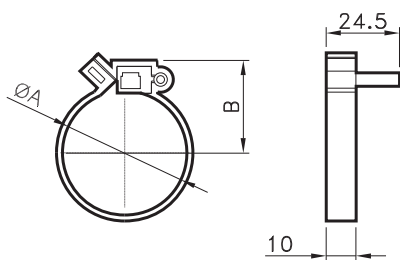
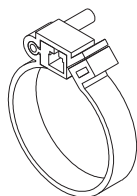
AR4023120 HALL + M8 (CM 30) / HALL + M8 / HALL + M8 (CM 30)

For technical data see page 1.62

Technické údaje viz strana 1.62

Per i dati tecnici vedere pag. 1.62

ADAPTOR FOR T SWITCH  
DRŽÁK PRO SNÍMAČ POLOHY  
ADATTATORE SENSORE AT



CODE

Ø

AR4199032 32

AR4199040 40

AR4199050 50

AR4199063 63

Ø	A	B
32	33.6	27
40	41.6	31
50	52.4	37
63	65.4	42