



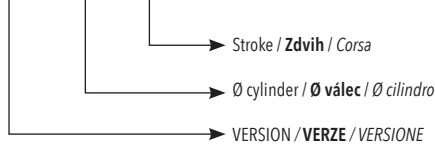
MX series cylinders are entirely made in stainless steel. They are ideal for the food and pharmaceutical industry and are available with three different bores: 16-20-25 mm. Both front and rear heads are fixed to the tube through a rolling process. They are available in different versions, single or double effect, magnetic, cushioned. A complete range of fixing accessories is available, and the production of customized cylinders on drawing is possible.

Válce řady MX jsou vyráběny výhradně z nerezové oceli. Jsou ideální pro potravinářský a farmaceutický průmysl a jsou k dispozici se třemi různými otvory: 16-20-25 mm. Přední i zadní hlava jsou k trubce připevněny válcováním. Jsou k dispozici v různých verzích, s jedním nebo dvěma efekty, magnetické, polstrované. K dispozici je kompletní řada upevňovacích doplňků a je možné vyrábět přizpůsobené válce na výkresu.

La serie di cilindri MX è completamente in acciaio inox. Ideali per applicazioni nel settore alimentare e farmaceutico, vengono realizzati in tre diametri 16-20-25. Anche in questa versione le testate sono fissate alla camicia mediante rullatura. Sono disponibili differenti versioni, semplice e doppio effetto, magnetico e ammortizzato. Su richiesta è possibile realizzare soluzioni speciali.

## ORDERING CODE / OBJEDNÁVKOVÝ KÓD / CHIAVE DI CODIFICA

M X 0 0 1 0 0 0 0 0



Stroke / **Zdvih** / *Corsa*  
 Ø cylinder / **Ø válec** / *Ø cilindro*  
 VERSION / **VERZE** / *VERSIONE*  
 01=double acting magnetic / **Dvojitý s magnetem** / *doppio effetto magnetico*  
 03=d.a. through rod magnetic / **Dvojitý s průběžnou pístnicí** / *d.e. stelo passante magnetico*  
 05=double acting magnetic cushioned / **Dvojitý s magnetem a tlumením** / *doppio effetto magnetico ammortizzato*  
 07=d.a. through rod magnetic cushioned / **Dvojitý s průběžnou pístnicí a magnetem** / *d.e. stelo passante magnetico ammortizzato*

## VERSION / VERZE / VERSION



## STANDARD STROKES / STANDARDNÍ ZDVIHY / CORSE STANDARD

 Double acting / **Dvojitý** / *Doppio effetto*

**Ø16** mm 10-25-50-80-100-125-160-200-250-320-400-500  
**Ø20** mm 10-25-50-80-100-125-160-200-250-320-400-500  
**Ø25** mm 10-25-50-80-100-125-160-200-250-320-400-500

 Cushioning / **Tlumení** / *Ammortizzato*

**Ø20** mm 10-25-50-80-100-125-160-200-250-320  
**Ø25** mm 10-25-50-80-100-125-160-200-250-320-400-500

## TECHNICAL DATA / TECHNICKÁ DATA / DATI TECNICI

 Fluid / **Médium** / *Fluido*

 Lubricated or non lubricated air / **Mazaný nebo nemazaný vzduch** / *Aria con o senza lubrificazione*

 Operating temperature range / **Rozsah provozních teplot** / *Temp. di esercizio*

-20°C / +80°C

 Max operating pressure / **Maximální provozní tlak** / *Pressione massima di esercizio*

10 bar

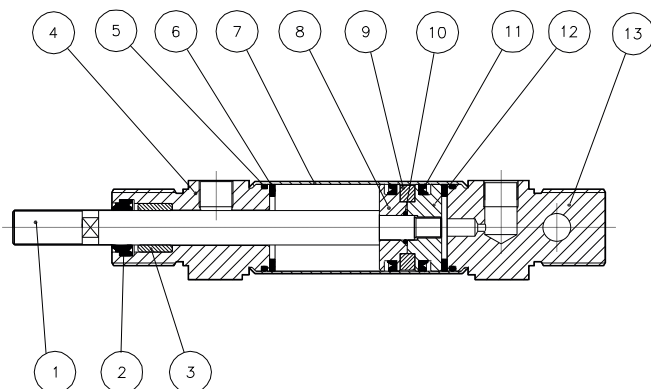
 Force / **Platnost** / *Forze sviluppate*

 Technical informations page / **Stránka technických informací** / *Pagina dati tecnici*

 Air consumption / **Spotřeba vzduchu** / *Consumo aria*

 Technical informations page / **Stránka technických informací** / *Pagina dati tecnici*

## COMPONENTS / KOMPONENTY / COMPONENTI



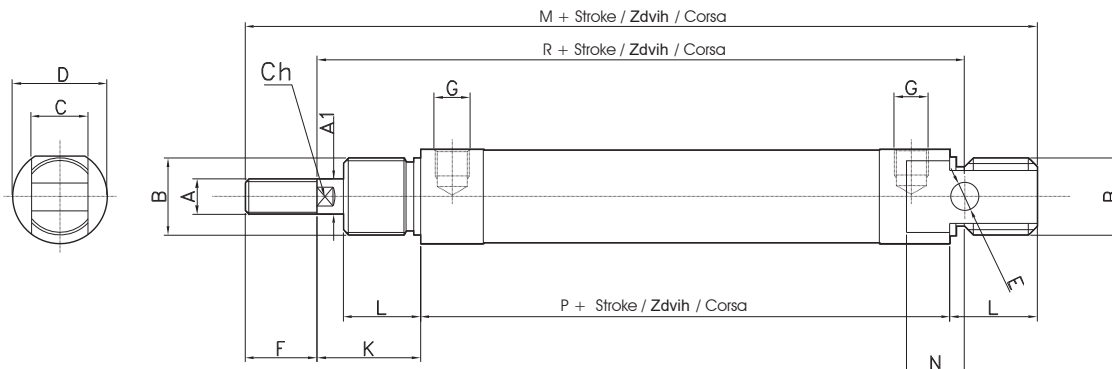
## DESCRIPTION / POPIS / DESCRIZIONE

## MATERIAL / MATERIÁL / MATERIALE

1	rod / <b>pístní tyč</b> / <i>stelo</i>	stainless steel AISI 316 / <b>nerezová ocel AISI 304</b>
2	rod seal / <b>těsnění pístní tyče</b> / <i>guarn. stelo</i>	polyurethane / <b>polyurethan</b> / <i>poliuretano</i>
3	guide bush / <b>vodící pouzdro</b> / <i>buss. guida</i>	bronze / <b>bronz</b> / <i>bronzo</i>
4	front cap / <b>přední víko</b> / <i>testata anteriore</i>	stainless steel AISI 304 / <b>nerezová ocel AISI 304</b>
5	o-ring / <b>O-kroužek</b>	NBR
6	bumper / <b>doraz</b> / <i>paracolpo</i>	NBR
7	tube / <b>trubka</b> / <i>tube</i>	stainless steel AISI 304 / <b>nerezová ocel AISI 304</b>
8	piston / <b>píst</b> / <i>pistone</i>	brass / <b>mosaz</b> / <i>ottone</i>
9	magnet / <b>magnet</b> / <i>magnete</i>	plastoferrite
10	o-ring / <b>O-kroužek</b>	NBR
11	seal piston / <b>těsnící píst</b> / <i>guarnizione pist.</i>	polyurethane / <b>polyurethan</b> / <i>poliuretano</i>
12	piston / <b>píst</b> / <i>pistone</i>	brass / <b>mosaz</b> / <i>ottone</i>
13	rear cap / <b>zadní víko</b> / <i>testata post.</i>	stainless steel AISI 304 / <b>nerezová ocel AISI 304</b>

Double acting magnetic  
**Dvojčinný s magnetem**  
 Doppio effetto magnetico

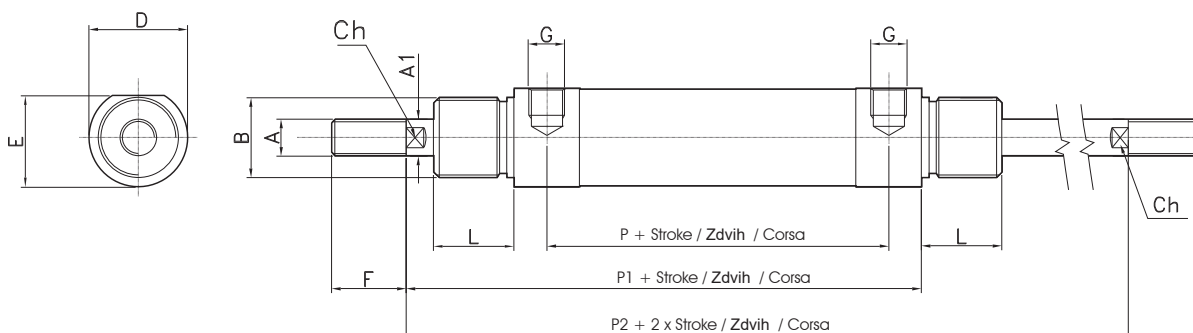
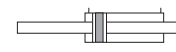
CODE: MX011.Ø.mm



Ø	A	A1	B	C	D	E	F	G	K	L	M	N	P	R	CH
16	M6	6	M16x1.5	12	19	6	16	M5	22	18	109	9	53	82	5
20	M8	8	M22x1.5	16	27	8	20	1/8 G	24	20	131	12	67	95	7
25	M10x1.25	10	M22x1.5	16	30	8	22	1/8 G	28	22	140	12	68	104	9

Double acting through rod magnetic  
**Dvojčinný s průběžnou pístnicí**  
 Doppio effetto stelo passante magnetico

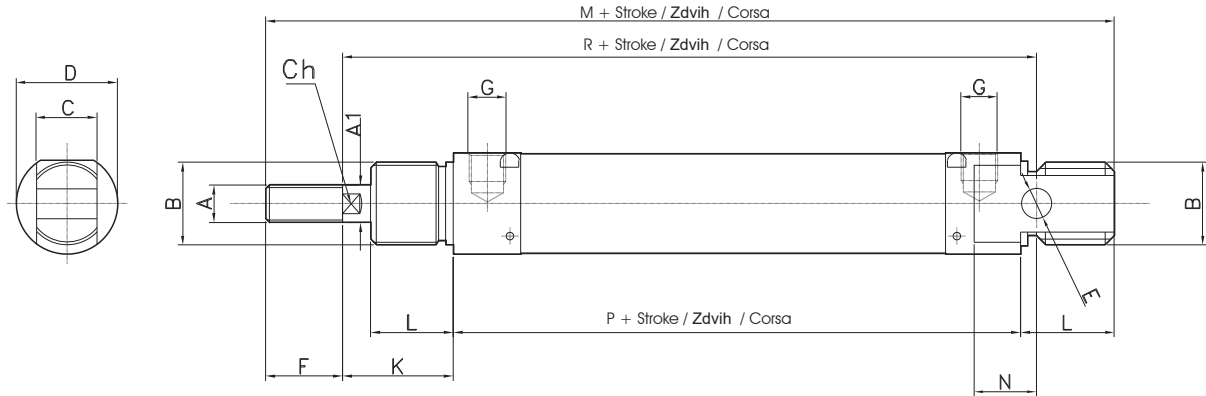
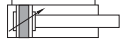
CODE: MX031.Ø.mm



Ø	A	A1	B	D	E	F	G	L	P	P1	P2	CH
16	M6	6	M16x1.5	19	18	16	M5	18	43	75.5	97.5	5
20	M8	8	M22x1.5	27	25.5	20	1/8" G	20	51.5	92	116	7
25	M10x1.25	10	M22x1.5	30	28.5	22	1/8" G	22	52	97	125	9

Double acting magnetic cushioned  
**Dvojitý s magnetem a tlumením**  
 Doppio effetto magnetico ammortizzato

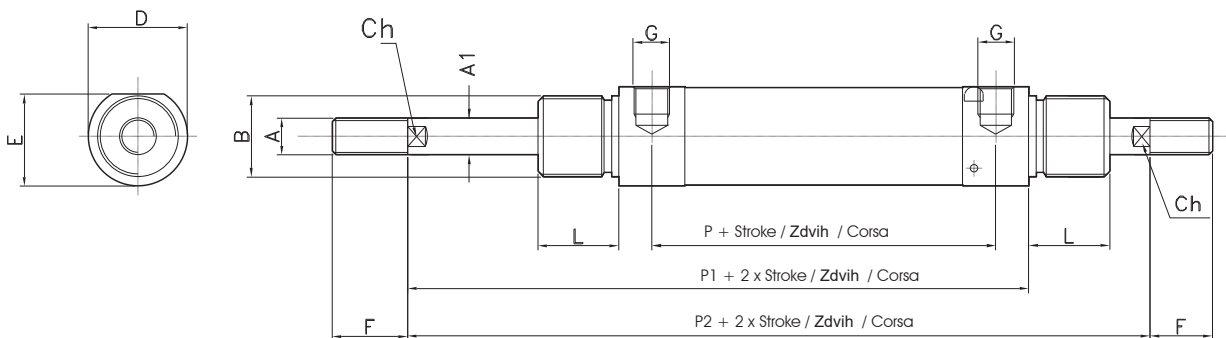
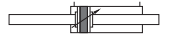
CODE: MX051.Ø.mm



Ø	A	A1	B	C	D	E	F	G	K	L	M	N	P	R	CH
20	M8	8	M22x1.5	16	27	8	20	1/8 G	24	20	131	12	67	95	7
25	M10x1.25	10	M22x1.5	16	30	8	22	1/8 G	28	22	140	12	68	104	9

D.A. through rod magnetic cushioned  
**Dvojitý s průběžnou pístnicí a magnetem**  
 D.E. stelo passante magnetico ammortizzato

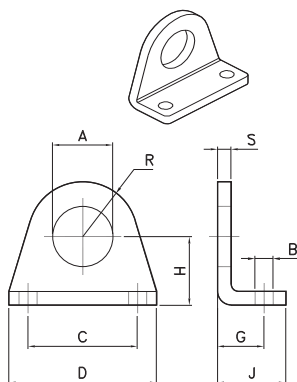
CODE: MX071.Ø.mm



Ø	A	A1	B	D	E	F	G	L	P	P1	P2	CH
20	M8	8	M22x1.5	27	25.5	20	1/8" G	20	51	91	115	7
25	M10x1.25	10	M22x1.5	30	28.5	22	1/8" G	22	52	96	124	9

PEDESTAL  
**BOČNÍ PATKA**  
 PIEDINO

Material: Stainless steel AISI 304  
**Materiál: nerezová ocel AISI 304**  
 Materiale: Inox AISI 304

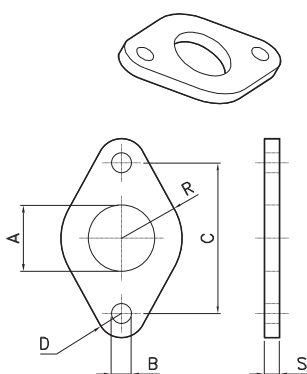


CODE	Ø
AR416116	16
AR416120	20-25

Ø	A	B	C	D	G	H	J	R	S
8-10	12	4.5	25	35	11	16	16	10	3
12-16	16	5.5	32	42	14	20	20	12.5	4
20-25	22	6.6	40	54	17	25	25	20	5

FLANGE  
**ČELNÍ (ZADNÍ) DESKA**  
 FLANGIA

Material: Stainless steel AISI 304  
**Materiál: nerezová ocel AISI 304**  
 Materiale: Inox AISI 304

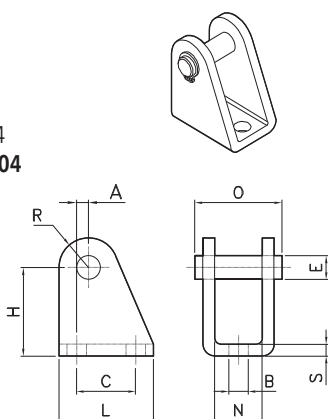


CODE	Ø
AR416216	16
AR416220	20-25

Ø	A	B	C	D	R	S
8-10	12	4.5	30	5	11	3
12-16	16	5.5	40	6	15	4
20-25	22	6.6	50	8	20	5

FEMALE HINGE  
**ZADNÍ KYVNÉ LOŽISKO**  
 CERNIERA FEMMINA

Material: Stainless steel AISI 304  
**Materiál: nerezová ocel AISI 304**  
 Materiale: Inox AISI 304

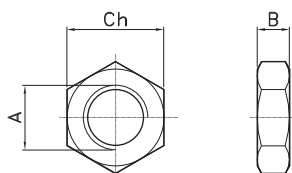


CODE	Ø
AR416316	16
AR416320	20-25

Ø	B	E	C	H	L	N	O	R	S
8-10	4.5	4	12.5	24	20	8.1	17	5	2.5
12-16	5.5	6	15	27	25	12.1	23	7	3
20-25	6.6	8	20	30	32	16.1	29.5	10	4

NUT FOR CAP  
**MATICE NA VÁLEC**  
 DADO PER TESTATA

Material: Stainless steel AISI 304  
**Materiál: nerezová ocel AISI 304**  
 Materiale: Inox AISI 304

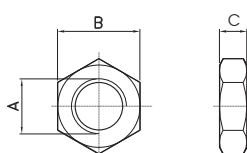


CODE	Ø
DIB16x1,5	16
DIB22x1,5	20-25

Ø	A	B	Ch
16	M16x1,5	8	24
20-25	M22x1,5	10	32

NUT FOR ROD  
**MATICE NA PÍSTNICI**  
 DADO PER STELO

Material: Stainless steel AISI 304  
**Materiál: nerezová ocel AISI 304**  
 Materiale: Inox AISI 304

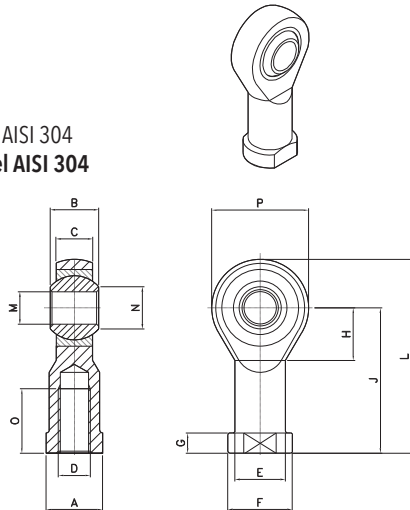


CODE	Ø
DIN6	16
DIN8	20
DIN10x1,5	25

Ø	A	B	Ch
16	M6	10	5
20	M8	13	6.5
25	M10x1,25	17	8

ROD ENDS  
**OKO KYVNÉ**  
 TESTA A SNODO

Material: Stainless steel AISI 304  
**Materiál: nerezová ocel AISI 304**  
 Materiale: Inox AISI 304

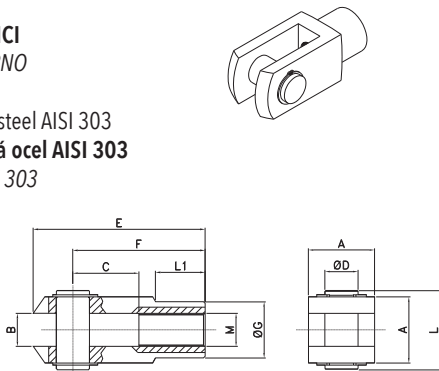


CODE	Ø
AR4187016	16
AR4187020	20
AR4187025	25

Ø	A	B	C	D	E	F	G	H	J	L	M	N	O	P
12-16	11	9	6.75	M6	10	13	5	11	30	40	6	8.9	12	20
20	14	12	9	M8	12.5	16	5	13	36	48	8	10.4	16	24
25	17	14	10.5	M10x1.25	15	19	6.5	15	43	57	10	12.9	20	28

YOKE  
**VIDLICE NA PÍSTNICI**  
 FORCELLA CON PERNO

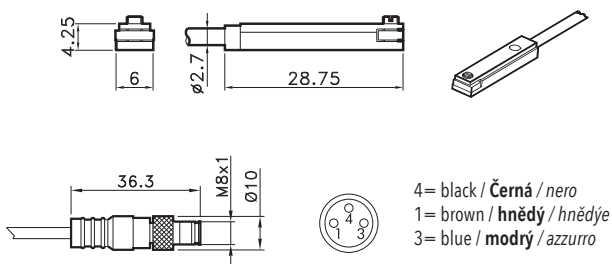
Material: Stainless steel AISI 303  
**Materiál: nerezová ocel AISI 303**  
 Materiale: Inox AISI 303



CODE	Ø
AR4216	16
AR4217	20
AR4218	25

Ø	A	B	C	D	E	F	G	M	L	L1
12-16	12	6	12	6	31	24	10	M6	17	9
20	16	8	16	8	42	32	14	M8	21	12
25	20	10	20	10	52	40	18	M10x1.25	25	15

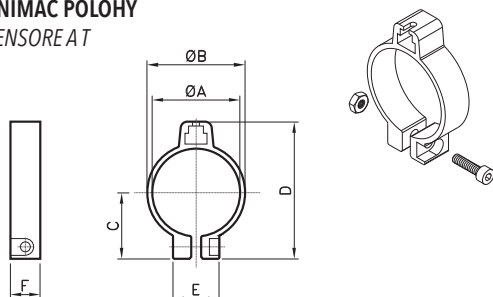
T SWITCH  
**MAGNETICKÝ SNÍMAČ POLOHY**  
 SENSORE A T



CODE	
AR4023010	REED (MT.2,5) / REED (MT.2,5) / REED (MT.2,5)
AR4023020	HALL (MT.2,5) / HALL (MT.2,5) / HALL (MT.2,5)
AR4023110	REED + M8 (CM 30) / REED + M8 / REED + M8 (CM 30)
AR4023120	HALL + M8 (CM 30) / HALL + M8 / HALL + M8 (CM 30)

For technical data see page 1.62  
**Technické údaje viz strana 1.62**  
 Per i dati tecnici vedere pag. 1.62

ADAPTOR FOR T SWITCH  
**DRŽÁK PRO SNÍMAČ POLOHY**  
 ADATTATORE SENSORE A T



CODE	Ø
AR4199016	16
AR4199020	20
AR4199025	25

Ø	A	B	C	D	E	F
16	17.3	20.3	15.3	32.1	12.3	9
20	21.3	24.3	17.4	36.2	14	9
25	26.5	29.5	20	41.4	14	9