



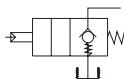
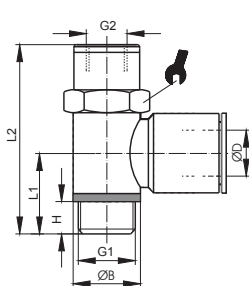
The stop valves is a pneumatic device that locks the cylinder's stroke in case of loss of pressure in the system. The valves are mounted directly on the cylinder's supply and do not interfere with the functioning of the cylinder.

**Uzavírací ventily jsou pneumatické zařízení, které zablokuje zdvih válce v případě ztráty tlaku v systému. Ventily jsou namontovány přímo na napájení válce a nenarušují fungování válce.**

*Le valvole di blocco sono dispositivi pneumatici che garantiscono il bloccaggio della corsa del cilindro in caso di caduta di pressione dell'impianto. Vengono montati direttamente sulle alimentazioni del cilindro e non interferiscono sul normale funzionamento del cilindro stesso.*

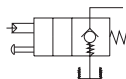
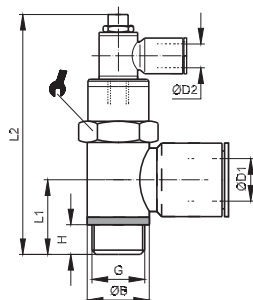
## TECHNICAL DATA / TECHNICKÁ DATA / DATI TECNICI

Fluid / Tekutina / Fluido	Lubricated or non lubricated air / Mazaný nebo nemazaný vzduch / Aria con o senza lubrificazione
Pressure range / Pracovní tlak / Pressione di esercizio	1 - 10 bar
Temperature range / Provozní teplota / Temperatura di esercizio	-10°C / +70°C
Thread / Závit / Filetti	1/8 - 1/4 - 3/8 - 1/2
Tube / Trubka / Tubo	4mm - 6mm - 8mm - 10mm - 12mm



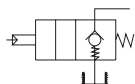
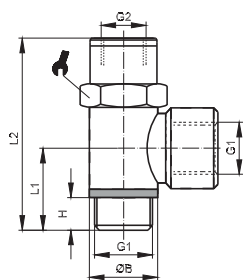
### STOP VALVE STOP VENTIL VALVOLA DI BLOCCO

CODE	ØD	G1	ØB	G2	H	L1	L2	CH
VO0204	4	1/8	14	M5	6	15,5	42	13
VO0206	6	1/8	14	M5	6	15,5	42	13
VO0306	6	1/4	18	M5	8	18,5	47	17
VO0208	8	1/8	14	M5	6	15,5	42	13
VO0308	8	1/4	18	M5	8	18,5	47	17
VO0408	8	3/8	21	1/8	9	21	53,5	20
VO0310	10	1/4	18	M5	8	18,5	47	17
VO0410	10	3/8	21	1/8	9	21	53,5	20
VO0312	12	1/4	18	M5	8	18,5	47	17
VO0412	12	3/8	21	1/8	9	21	53,5	20



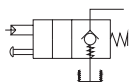
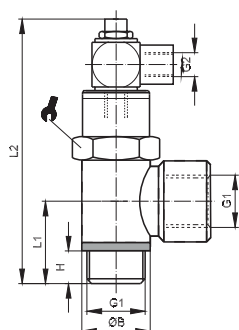
### STOP VALVE WITH PNEUMATIC CONTROL STOP VENTIL S PNEUMATICKÝM OVLÁDÁNÍM VALVOLA DI BLOCCO CON COMANDO PNEUMATICO

CODE	ØD1	G	ØB	ØD1	H	L1	L2	CH
VO2204	4	1/8	14	4	6	15,5	62	13
VO2206	6	1/8	14	4	6	15,5	62	13
VO2306	6	1/4	18	4	8	18,5	67	17
VO2208	8	1/8	14	4	6	15,5	62	13
VO2308	8	1/4	18	4	8	18,5	67	17
VO2408	8	3/8	21	6	9	21	76,5	20
VO2310	10	1/4	18	4	8	18,5	67	17
VO2410	10	3/8	21	6	9	21	76,5	20
VO2312	12	1/4	18	4	8	18,5	67	17
VO2412	12	3/8	21	6	9	21	76,5	20



FEMALE STOP VALVE  
STOP VENTIL VNITŘNÍ  
VALVOLA DI BLOCCO FEMMINA

CODE	G1	ØB	G2	H	L1	L2	CH
V002	1/8	15	M5	6	15,5	42	13
V003	1/4	18	M5	8	18,5	47	17
V004	3/8	22	1/8	9	21	53,5	20
V005	1/2	27	1/8	10	24,5	60	25



FEMALE STOP VALVE WITH PNEUMATIC CONTROL  
STOP VENTIL S PNEUMATICKÝM OVLÁDÁNÍM VNITŘNÍ  
VALVOLA DI BLOCCO FEMMINA CON COMANDO PNEUMATICO

CODE	G1	ØB	G2	H	L1	L2	CH
V022	1/8	15	M5	6	15,5	62	13
V023	1/4	18	M5	8	18,5	67	17
V024	3/8	22	1/8	9	21	76,5	20
V025	1/2	27	1/8	10	24,5	83	25