



The selector valve can control two different inputs, choosing one or the other, but using only one way out.

**Logické prvky.**

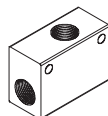
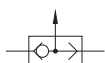
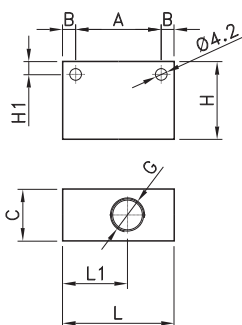
La valvola selettiva ha il compito di comandare due diversi ingressi selezionando uno o l'altro ma di utilizzare una sola uscita.

**TECHNICAL DATA / TECHNICKÁ DATA / DATI TECNICI**

Fluid / Tekutina / Fluido	Lubricated or non lubricated air / Mazaný nebo nemazaný vzduch / Aria con o senza lubrificazione
Pressure range / Pracovní tlak / Pressione di esercizio	2 - 10bar
Temperature range / Provozní teplota / Temperatura di esercizio	-10°C / +60°C
Nominal flow rate at 6 bar / Průtok à 6 bar / Portata a 6 bar	1/8=400 NI/min · 1/4=1300 NI/min

**COMPONENTS / KOMPONENTY / COMPONENTI**

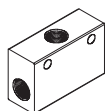
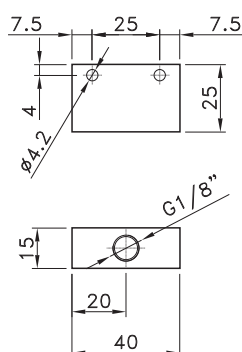
Body / Tělo / Corpo	Aluminium anodized / Eloxovaný hliník / Alluminio anodizzato
Internal parts / Vnitřní části / Parti interne	Brass / mosaz / Ottone
Seals / Těsnění / Guarnizioni	NBR



OR

<b>CODE</b>	
VS0101	1/8
VS0201	1/4

G	A	B	C	H	H1	L	L1
G1/8	20	4.5	15	25	4.5	34.8	14.5
G1/4	33	5	20	30	5	43	25



AND

<b>CODE</b>	
VL22	