



Angular grippers with 180° opening are the ideal solution to limited space requirements and where is necessary necessity to have fully retractable jaws, avoiding the impact with other machine's components. This series of grippers allows the possibility to install magnetic round switches on the two main surfaces. Available sizes: Ø10, 16, 20 and 25 mm.

Úhlové chapadla s úhlem 180° jsou ideálním řešením omezených prostorových požadavků a tam, kde je to nutné, je třeba mít plně zatahovací čelisti, které zabraňují nárazům na jiné součásti stroje. Tato řada chapadel umožňuje instalaci magnetických kruhových spínačů na dva hlavní povrchy. Dostupné velikosti: Ø10, 16, 20 a 25 mm.

Le pinze ad apertura angolare a 180° sono la soluzione ideale ad esigenze di ingombro e alla necessità che le due griffe si ritirino completamente, impedendo l'impatto con altre parti della macchina. In questa pinza è possibile montare sensori magnetici tondi sulle due facciate principali. Taglie disponibili: Ø10, 16, 20 e 25mm.

ORDERING CODE / OBJEDNÁVKOVÝ KÓD / CHIAVE DI CODIFICA

P G 3 0 0

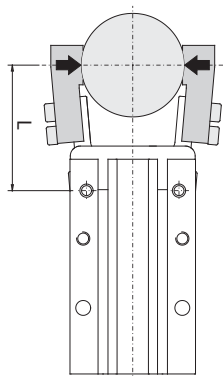
Ø gripper / Ø chapadlo / Ø pinza
10 - 16 - 20 - 25 mm

3 = Double acting / Dvojčinné / Doppio effetto

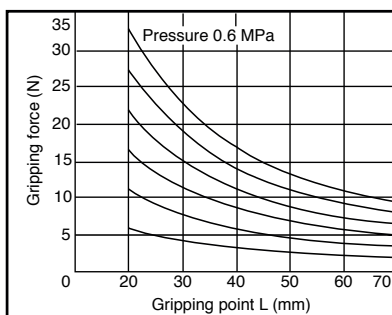
TECHNICAL DATA / TECHNICKÁ DATA / DATI TECNICI

Standard bore / Velikosti standard / Taglie standard	Ø 10 - 16 - 20 - 25 mm
Fluid / Médium / Fluido	Lubricated or non lubricated air / Mazaný nebo nemazaný vzduch / Aria con o senza lubrificazione
Operating temperature range / Rozsah provozních teplot / Temp. di esercizio	-10°C / +60°C
Pressure range / Rozsah tlaku / Pressione di utilizzo	2 - 7 bar
Action tolerance / Akční tolerance / Tolleranza d'azione	± 0.2 mm
Max operating frequency / Maximální provozní frekvence / Max frequenza operativa	60 c.p.m.

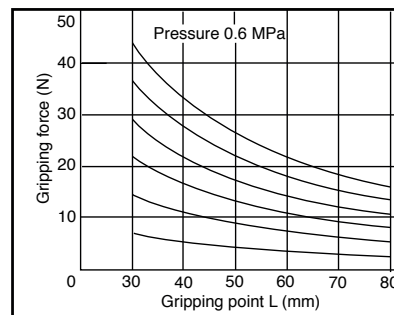
HOLDING POINT / UCHOPOVACÍ BOD / PUNTO DI PRESA



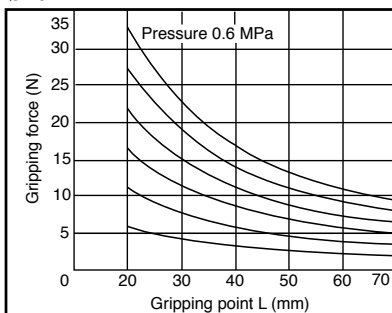
Ø10



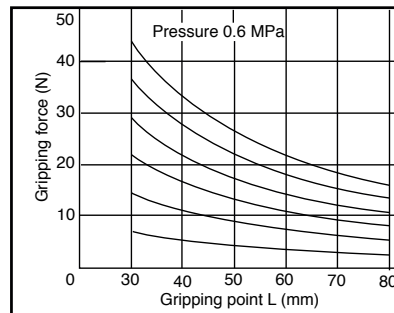
Ø16

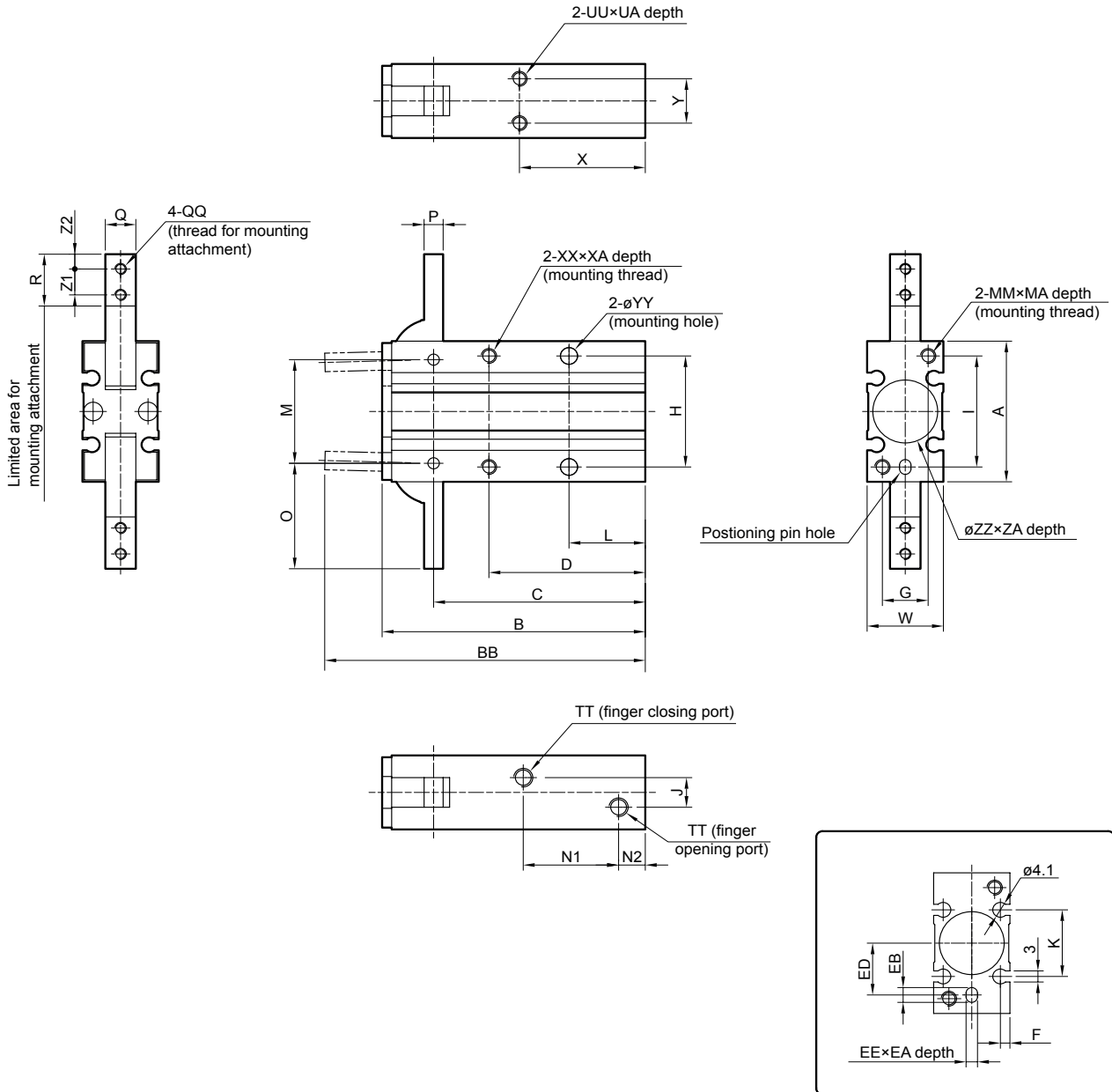


Ø20



Ø25

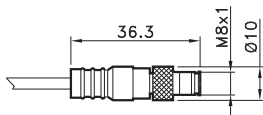
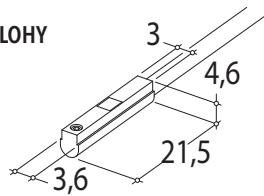




Ø	A	B	BB	C	D	EE	EA	EB	ED	F	G	H	I	J	K	L	M	MA	MM	N1	N2
10	30	58	71	47.5	35	3H9	3	4	9	2	9	24	24	3	13	18	22	6	M3x0.5	23	7
16	38	69	84	55.5	41	3H9	3	4	15	2.5	12	30	30	8	18	20	28	8	M4x0.7	25	7
20	48	86	106	69	50	4H9	4	5	19	3	16	36	38	12	20	25	36	10	M5x0.8	32	8
25	58	107	131	86	60	4H9	4	5	23	3	18	42	46	14	24	30	45	12	M6x1	42	8

Ø	O	P	Q	QH	QQ	R	TT	UA	UU	W	X	XA	XX	Y	YY	ZA	ZZ	Z1	Z2
10	23.5	4	6	3.4	M3x0.5	12	M5X0.8	4	M3x0.5	15	30	6	M3x0.5	9	3.4	1.5	11H9	6	3
16	28.5	5	8	3.4	M3x0.5	14	M5X0.8	5	M4x0.7	20	33	8	M4x0.7	12	4.5	1.5	17H9	7	4
20	37	8	10	4.5	M4x0.7	18	M5X0.8	8	M5x0.8	26	42	10	M5x0.8	14	5.5	1.5	21H9	9	5
25	45	10	12	5.5	M5x0.8	22.5	M5X0.8	10	M6x1	30	50	12	M6x1	16	6.6	1.5	26H9	12	6

ROUND SWITCH
 MAGNETICKÝ SNÍMAČ POLOHY
 SENSORE TONDO



4= black / Černá / nero
 1= brown / hnědý / hnědé
 3= blue / modrý / azzurro

CODE

AR4018010	REED (MT.2,5) / REED (MT.2,5) / REED (MT.2,5)
AR4018020	HALL (MT.2,5) / HALL (MT.2,5) / HALL (MT.2,5)
AR4018110	REED + M8 (CM 30) / REED + M8 / REED + M8 (CM 30)
AR4018120	HALL + M8 (CM 30) / HALL + M8 / HALL + M8 (CM 30)

For technical data see page 1.63

Technické údaje viz strana 1.63

Per i dati tecnici vedere pag. 1.63