



This valve allows the transit of the air only in one way, the valve stops it in the opposite way. They are available with male or female thread, in several dimensions.

Tento ventil umožňuje průchod vzduchu pouze jedním směrem. Jsou k dispozici s vnějším nebo vnitřním závitem, nebo určené přímo na hadici a případně kombinace v dostupných rozměrech.

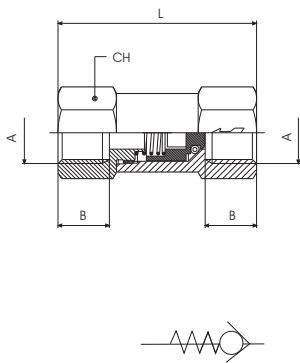
*Questa valvola consente il passaggio dell'aria solamente in un senso bloccandola nel senso opposto.
Sono disponibili con filetto maschio, femmina maschio/tubo o tubo/tubo in diverse dimensioni.*

TECHNICAL DATA / TECHNICKÁ DATA / DATI TECNICI

Fluid / Tekutina / Fluido	Lubricated or non lubricated air / Mazaný nebo nemazaný vzduch / Aria con o senza lubrificazione
Pressure range / Pracovní tlak / Pressione di esercizio	2 - 8 bar
Temperature range / Provozní teplota / Temperatura di esercizio	-20°C / +80°C

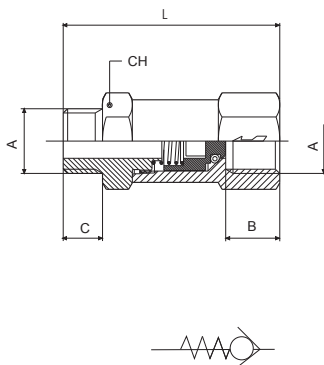
COMPONENTS / KOMPONENTY / COMPONENTI

Body / Tělo / Corpo	Nickel-plated brass / Poniklovaná mosaz / Ottone nichelato
Spring / Pružina / Molla	Stainless steel / Nerezová ocel / Acciaio inox
Shutter / Koule / Otturatore	Nickel-plated brass / Poniklovaná mosaz / Ottone nichelato
Seals / Těsnění / Guarnizioni	NBR



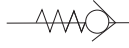
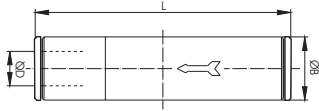
NON-RETURN VALVE FEMALE / FEMALE
ZPĚTNÝ VENTIL VNITŘNÍ / VNITŘNÍ
VALVOLE DI NON RITORNO FEMMINA / FEMMINA

CODE	A	B	L	CH
VR40011	M5	5,5	26,5	8
VR40012	1/8	8,5	35,5	13
VR40013	1/4	11	43	17
VR40014	3/8	12	58	24
VR40015	1/2	15	63	24



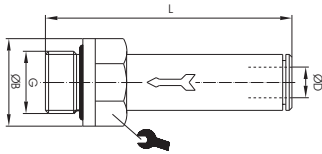
NON-RETURN VALVE MALE / FEMALE
ZPĚTNÝ VENTIL VNITŘNÍ / VNĚJŠÍ
VALVOLE DI NON RITORNO MASCHIO / FEMMINA

CODE	A	B	C	L	CH
VR40021	M5	5,5	4	34,5	8
VR40022	1/8	8,5	6	37,5	14
VR40023	1/4	11	8	46,6	17
VR40024	3/8	12	9	61	24
VR40025	1/2	15	10	64	24




TUBE / TUBE NON-RETURN VALVE
ZPĚTNÝ VENTIL NA HADICI
VALVOLE DI NON RITORNO TUBO / TUBO

CODE	ØD	ØB	L
VR400504	4	9	44,5
VR400506	6	11	50
VR400508	8	13	53,5



MALE THREAD / TUBE NON-RETURN VALVE
ZPĚTNÝ VENTIL VNĚJŠÍ / NA HADICI
VALVOLE DI NON RITORNO FILETTO MASCHIO / TUBO

CODE	ØD	G	ØB	L	
VR4003104	4	M5	8	37	9
VR4003204	4	1/8	13	30	11
VR4003206	6	1/8	13	37,5	13
VR4003306	6	1/4	16	38	14
VR4003208	8	1/8	13	38	15
VR4003308	8	1/4	16	39	16
VR4003310	10	1/4	16	42,5	18
VR4003410	10	3/8	20	42,5	18
VR4003512	12	1/2	25	45	22
VR4003514	14	1/2	25	52,5	25