



POS's angular pneumatic grippers are the right solution for simple manipulation applications while maintaining a very compact design to reduce as much as possible their overall dimensions. Thanks to the possibility to assemble them in different positions, they can be used for several applications. Moreover, there's the possibility to insert a round magnetic switch in each of the four side surfaces.

**Úhlové pneumatické chapadla POS jsou tím pravým řešením pro jednoduché manipulační aplikace a zároveň zachovávají velmi kompaktní design, aby se co nejvíce zmenšily jejich celkové rozměry. Díky možnosti jejich montáže na různých pozicích mohou být použity pro několik aplikací. Kromě toho existuje možnost vložit kulatý magnetický spínač do každé ze čtyř bočních povrchů.**

*Le pinze pneumatiche ad apertura angolare di POS rappresentano la soluzione giusta per applicazioni di manipolazione semplice ma con la necessità di ridurre al massimo gli ingombri. Grazie alla possibilità di montaggio in diverse posizioni, rispondono alle esigenze di impiego più svariate. Inoltre è possibile inserire il sensore magnetico tondo su tutte le facciate della pinza.*

## ORDERING CODE / OBJEDNÁVKOVÝ KÓD / CHIAVE DI CODIFICA

PA300

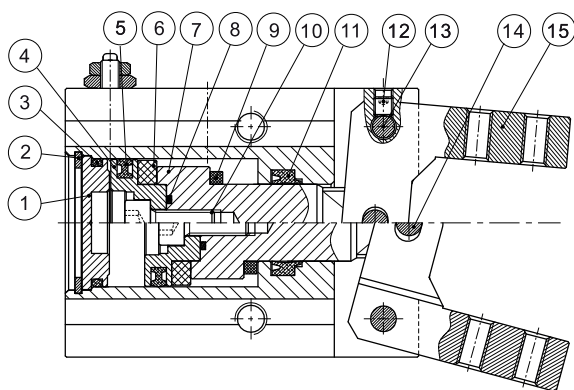
→ Ø gripper / Ø chapadlo / Ø pinza  
10 - 16 - 20 - 25 mm

→ VERSION / VERZE / VERSIONE  
3 = Double acting / **Dvojitěnné** / Doppio effetto  
5 = Single acting open fingers / **Jednorázové otevřené prsty** / Semplice effetto dita aperte

## TECHNICAL DATA / TECHNICKÁ DATA / DATI TECNICI

Standard bore / <b>Velikosti standard</b> / Taglie standard	Ø 10 - 16 - 20 - 25 mm
Fluid / <b>Médium</b> / Fluido	Lubricated or non lubricated air / <b>Mazaný nebo nemazaný vzduch</b> / Aria con o senza lubrificazione
Operating temperature range / <b>Rozsah provozních teplot</b> / Temp. di esercizio	-10°C / +80°C
Pressure range / <b>Rozsah tlaku</b> / Pressione di utilizzo	2 - 7 bar
Action tolerance / <b>Akční tolerance</b> / Tolleranza d'azione	± 0.1mm
Max operating frequency / <b>Maximální provozní frekvence</b> / Max frequenza operativa	180 c.p.m.

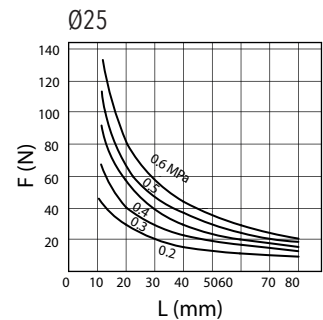
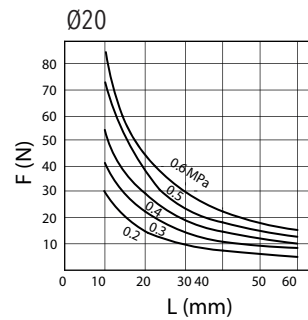
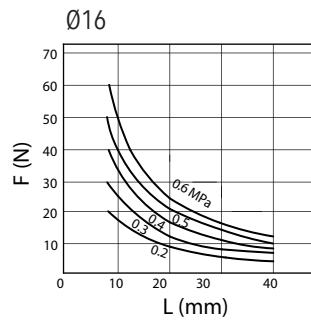
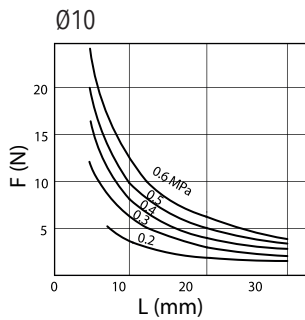
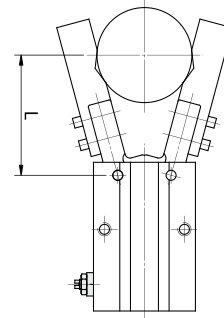
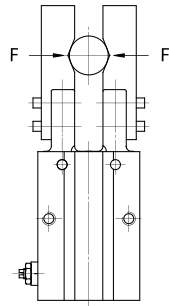
## COMPONENTS / KOMPONENTY / COMPONENTI



DESCRIPTION / <b>POPIS</b> / DESCRIZIONE	MATERIAL / <b>MATERIÁL</b> / MATERIALE
1 rear cap / <b>zadní víčko</b> / testata post.	aluminium / <b>hliník</b> / alluminio
2 snap ring / <b>snap prsten</b> / seeger	steel alloy / <b>slitina oceli</b> / acciaio
3 O-ring / <b>O-kroužek</b> / O ring	NBR
4 piston / <b>píst</b> / pistone	aluminium / <b>hliník</b> / alluminio
5 seal piston / <b>těsnící píst</b> / guarnizione pist.	NBR
6 magnet / <b>magnet</b> / magnete	synthetic rubber / <b>syntetická guma</b> / gomma sintetica
7 piston rod / <b>pístní tyč</b> / stelo	aluminium / <b>hliník</b> / alluminio
8 O-ring / <b>O-kroužek</b> / O ring	NBR
9 bumper / <b>nárazník</b> / para colpi	PTEE
10 screw / <b>šroub</b> / vite	steel alloy / <b>slitina oceli</b> / acciaio
11 seal / <b>těsnění</b> / guarnizione	NBR
12 screw / <b>šroub</b> / vite	steel alloy / <b>slitina oceli</b> / acciaio
13 pin / <b>otočný čep</b> / perno	stainless steel / <b>nerezová ocel</b> / acciaio inox
14 pin / <b>otočný čep</b> / perno	stainless steel / <b>nerezová ocel</b> / acciaio inox
15 finger / <b>prst</b> / dito	steel alloy / <b>slitina oceli</b> / acciaio

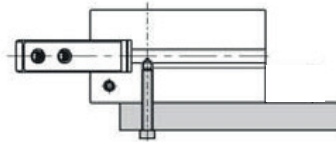
Effective holding force  
Efektivní přidrzná síla  
Forza di presa

Holding point  
Držte bod  
Punto di presa



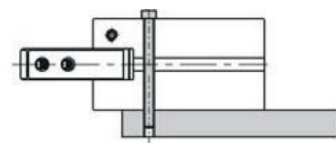
INSTALLATION / INSTALACE / INSTALLAZIONE

Horizontal with screws in grip on body  
Horizontální se šrouby v rukojeti na těle  
Orizzontale con viti in presa su corpo



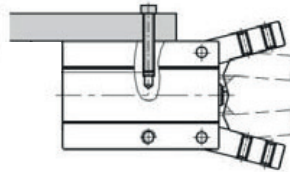
	Bolt Size Velikost šroubu Dimensione vite	Max. Locking Torque Maximální blokovací moment Max. Coppia di bloccaggio
Ø10	M3x0.5	0.69 Nm
Ø16	M4x0.7	2.1 Nm
Ø20	M5x0.8	4.3 Nm
Ø25	M6x1.0	7.3 Nm

Horizontal with through screws  
Horizontální s průchozími šrouby  
Orizzontale con viti passanti



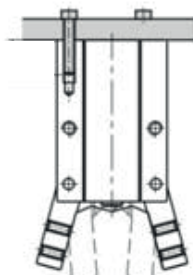
	Bolt Size Velikost šroubu Dimensione vite	Max. Locking Torque Maximální blokovací moment Max. Coppia di bloccaggio
Ø10	M2.5x0.45	0.49 Nm
Ø16	M3x0.5	0.88 Nm
Ø20	M4x0.7	2.1 Nm
Ø25	M5x0.8	4.3 Nm

In coast with screws in grip on body  
Na pobřeží se šrouby na rukojeti těla  
In costa con viti in presa su corpo

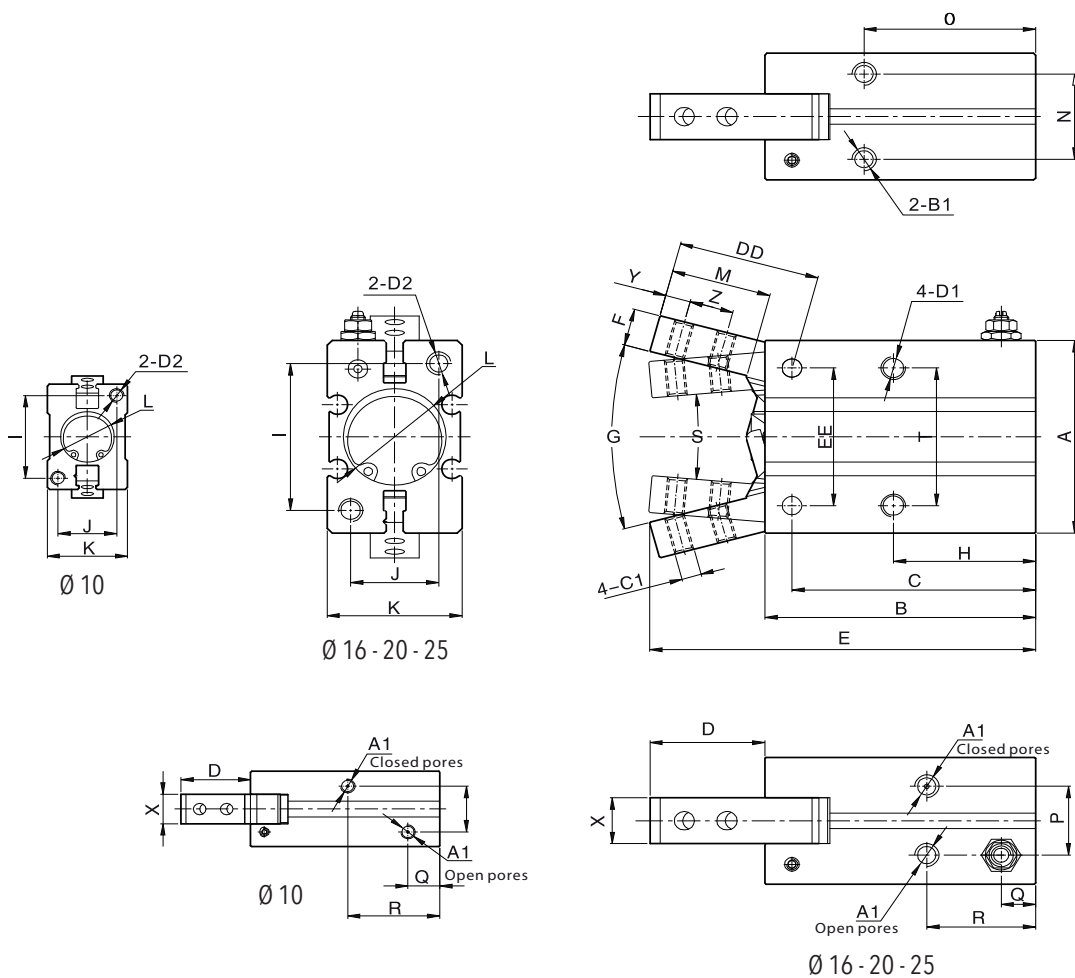


	Bolt Size Velikost šroubu Dimensione vite	Max. Locking Torque Maximální blokovací moment Max. Coppia di bloccaggio
Ø10	M3x0.5	0.88 Nm
Ø16	M4x0.7	1.6 Nm
Ø20	M5x0.8	3.3 Nm
Ø25	M6x1.0	5.9 Nm

Vertically with screws in grip on body  
Svisle se šrouby v rukojeti na těle  
In verticale con viti in presa su corpo



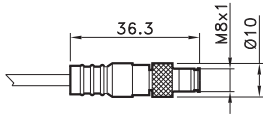
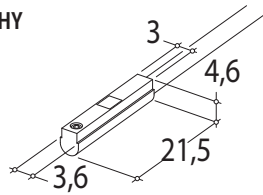
	Bolt Size Velikost šroubu Dimensione vite	Max. Locking Torque Maximální blokovací moment Max. Coppia di bloccaggio
Ø10	M3x0.5	0.88 Nm
Ø16	M4x0.7	2.1 Nm
Ø20	M5x0.8	4.3 Nm
Ø25	M6x1.0	7.3 Nm



Ø	A	A1	B	B1	C	C1	D	DD	D1	D2	E	EE	F	G	H	I	J
10	23	M3x0.5	38.6	M3x0.5 depth 6	35.8	M2x0.45	14.2	17.2	M3x0.5 depth 6	M3x0.5 depth 6	52.8	14	4	30°	23	18	12
16	30.6	M5x0.8	44.6	M4x0.7 depth 5.5	39.7	M3x0.5	18.9	23.6	M4x0.7 depth 9.5	M4x0.7 depth 8	63.5	24	7	30°	24.5	22	15
20	42	M5x0.8	55.2	M5x0.8 depth 8	49.7	M4x0.7	23.5	29	M5x0.8 depth 11.5	M5x0.8 depth 10	78.7	30	8	30°	29	32	18
25	52	M5x0.8	60.4	M6x1.0 depth 10	54.8	M5x0.8	32.8	38.5	M6x1.0 depth 14.5	M6x1.0 depth 12	93.2	36	10	30°	30	40	22

Ø	K	L	M	N	O	P	Q	R	S	T	X	Y	Z
10	16.4	Ø11 depth 1.5	12.5	11.4	27	10	6.5	18.8	10°	16	6.4	3	5.7
16	23.6	Ø17 depth 1.5	16.5	16	30	13	6.5	18.3	10°	24	8	4	7
20	27.6	Ø21 depth 1.5	20.5	18.6	35	15	7	22.2	10°	30	10	5.2	9
25	33.6	Ø26 depth 1.5	27.5	22	36.5	19.5	7.4	23.5	10°	36	12	8	12

ROUND SWITCH  
MAGNETICKÝ SNÍMAČ POLOHY  
SENSORE TONDO



4= black / **Černá** / nero  
1= brown / **hnědý** / hnědýe  
3= blue / **modrý** / azzurro

CODE

AR4018010	REED (MT.2,5) / <b>REED (MT.2,5)</b> / REED (MT.2,5)
AR4018020	HALL (MT.2,5) / <b>HALL (MT.2,5)</b> / HALL (MT.2,5)
AR4018110	REED + M8 (CM 30) / <b>REED + M8</b> / REED + M8 (CM 30)
AR4018120	HALL + M8 (CM 30) / <b>HALL + M8</b> / HALL + M8 (CM 30)

For technical data see page 1.63

**Technické údaje viz strana 1.63**

Per i dati tecnici vedere pag. 1.63