



POS microcylinders ISO 6432 are manufactured according to the european DIN/ISO norme, and have bores from 8 to 25 mm. The heads are fixed to the tube through a process of rolling. They are available in different versions: single/ double acting, magnetic, cushioned. A complete range of fixing accessories is available, and the production of special cylinders on customer's drawing is possible.

POS válce ISO 6432 jsou vyráběny podle evropské normy DIN / ISO a mají otvory od 8 do 25 mm. Hlavy jsou k trubce připevněny procesem válcování. Jsou k dispozici v různých verzích: jednočinné / dvojitěnné, magnetické, polstrované. K dispozici je kompletní řada příslušenství pro upevnění a výroba speciálních válců na výkrese zákazníka je možná.

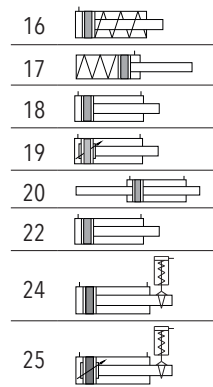
I microcilindri POS sono realizzati secondo le normative europee DIN/ISO 6432 ed hanno alesaggi compresi tra 8 e 25 mm. Le testate sono fissate alla camicia mediante rullatura. Sono realizzabili in differenti versioni, semplice e doppio effetto, magnetici, Ammortizzati. Sono inoltre disponibili i relativi accessori di fissaggio ed esecuzioni speciali a disegno.

ORDERING CODE / OBJEDNÁVKOVÝ KÓD / CHIAVE DI CODIFICA

M C 3 0 0 0 M 0 0 0 0 0

- Stroke / Zdvih / Corsa
- Ø cylinder / Ø válec / Ø cilindro
- M= magnetic / magnetický / magnetico  
0= non magnetic / bez magnetu / non magnetico
- VERSION / VERZE / VERSIONE
  - 16= single acting front spring / Jednočinné s přední pružinou / semplice effetto molla anteriore
  - 17= single acting rear spring / Jednočinné se zadní pružinou / semplice effetto molla posteriore
  - 18= double acting / Dvojitěnné / doppio effetto
  - 19= double acting with cushioning / Dvojitěnné s tlumením / doppio effetto con ammortizzo
  - 20= double acting through rod / Dvojitěnné s průběžnou pístnicí / doppio effetto stelo passante
  - 22= d.a. for rod lock / Dvojitěnný pro blokačním zařízením / d.e. con extrastelo per bloccastelo
  - 24= d.a. with rod lock / Dvojitěnný s blokačním zařízením / d.e. con bloccastelo
  - 25= d.a. cushioning with rod lock / Dvojitěnný s blokačním zařízením a tlumením / d.e. amm. con bloccastelo
- 3= Standard / Standard / Standard
- 5= feeding in axis - rear part / posuv v ose - zadní část / alimentazione in asse parte posteriore
- 6= anti rotation rod / tyč proti otáčení / antirotazione stelo esagonale

VERSION / VERZE / VERSION



STANDARD STROKES / STANDARDNÍ ZDVIHY / CORSE STANDARD

Double acting / Dvojitěnné / Doppio effetto

Ø8	mm 10-25-50-80-100-125
Ø10	mm 10-25-50-80-100-125
Ø12	mm 10-25-50-80-100-125-160-200
Ø16	mm 10-25-50-80-100-125-160-200-250
Ø20	mm 10-25-50-80-100-125-160-200-250-320
Ø25	mm 10-25-50-80-100-125-160-200-250-320

Cushioning / Tlumení / Ammortizzato

Ø16	mm 10-25-50-80-100-125-160-200-250
Ø20	mm 10-25-50-80-100-125-160-200-250-320
Ø25	mm 10-25-50-80-100-125-160-200-250-320

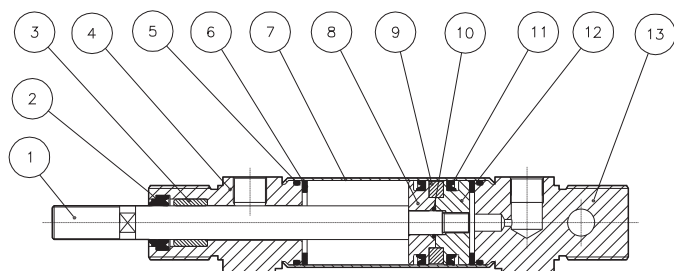
Single acting / Jednočinné / Semplice effetto

Ø8	mm 10-25-50
Ø10	mm 10-25-50
Ø12	mm 10-25-50
Ø16	mm 10-25-50
Ø20	mm 10-25-50
Ø25	mm 10-25-50

TECHNICAL DATA / TECHNICKÁ DATA / DATI TECNICI

Fluid / Médium / Fluido	Lubricated or non lubricated air / Mazaný nebo nemazaný vzduch / Aria con o senza lubrificazione
Operating temperature range / Rozsah provozních teplot / Temp. di esercizio	-20°C / +80°C
Max operating pressure / Maximální provozní tlak / Pressione massima di esercizio	10 bar
Force / Síly / Forze sviluppate	Technical informations page / Stránka technických informací / Pagina dati tecnici
Air consumption / Spotřeba vzduchu / Consumo aria	Technical informations page / Stránka technických informací / Pagina dati tecnici

COMPONENTS / KOMPONENTY / COMPONENTI



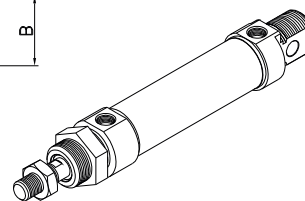
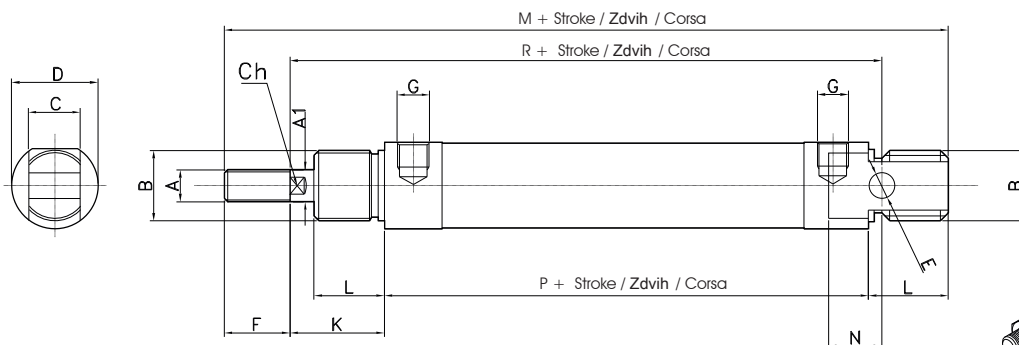
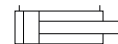
DESCRIPTION / POPIS / DESCRIZIONE	MATERIAL / MATERIÁL / MATERIALE
1 rod / pístní tyč / stelo	stainless steel AISI 303 / nerezová ocel AISI 303 303
2 rod seal / těsnění pístní tyče / guarn. stelo	polyurethane / polyurethan / poliuretano
3 guide bush / vodící pouzdro / bussola guida	bronze / bronz / bronzo
4 front cap / přední víko / testata anteriore	aluminium / hliník / alluminio
5 o-ring	NBR
6 bumper / doraz / paracolpo	NBR
7 tube / trubka / tube	stainless steel AISI 304 / nerezová ocel AISI 304
8 piston / píst / pistone	brass / mosaz / ottone
9 magnet / magnet / magnete	plastroferrite
10 o-ring	NBR
11 seal piston / těsnění píst / guarnizione pist.	polyurethane / polyurethan / poliuretano
12 piston / píst / pistone	brass / mosaz / ottone
13 rear cap / zadní víko / testata post.	aluminium / hliník / alluminio

Double acting  
**Dvojčinné**  
 Doppio effetto

CODE: MC3018M.Ø.mm



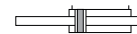
CODE: MC30180.Ø.mm



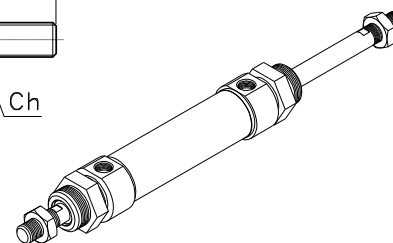
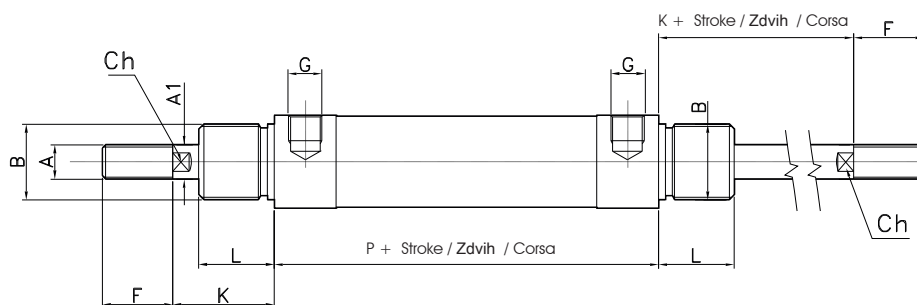
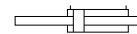
Ø	A	A1	B	C	D	E	F	G	K	L	M	N	P	R	CH
8	M4	4	M12x1.25	8	16	4	12	M5	16	12	86	6	46	64	-
10	M4	4	M12x1.25	8	16	4	12	M5	16	12	86	6	46	64	-
12	M6	6	M16x1.5	12	19	6	16	M5	22	18	104	9	48	75	5
16	M6	6	M16x1.5	12	19	6	16	M5	22	18	109	9	53	82	5
20	M8	8	M22x1.5	16	27	8	20	1/8 G	24	20	131	12	67	95	7
25	M10x1.25	10	M22x1.5	16	30	8	22	1/8 G	28	22	140	12	68	104	9

Double acting through rod  
**Dvojčinné s průběžnou pístnicí**  
 Doppio effetto stelo passante

CODE: MC3020M.Ø.mm



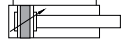
CODE: MC30200.Ø.mm



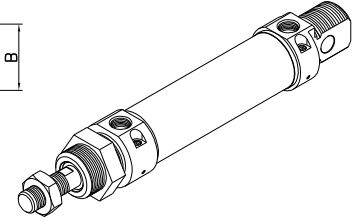
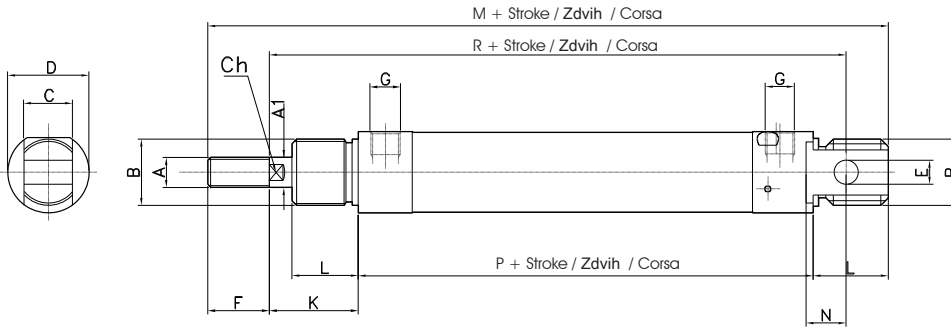
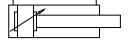
Ø	A	A1	B	D	F	K	L	P	G	CH
8	M4	4	M12x1.25	16	12	16	12	46	M5	-
10	M4	4	M12x1.25	16	12	16	12	46	M5	-
12	M6	6	M16x1.5	19	16	22	18	48	M5	5
16	M6	6	M16x1.5	19	16	22	18	53	M5	5
20	M8	8	M22x1.5	27	20	24	20	67	1/8 G	7
25	M10x1.25	10	M22x1.5	30	22	28	22	68	1/8 G	9

Double acting with cushioning  
**Dvojčinné s tlumením**  
 Doppio effetto con ammortizzo

CODE: MC3019M.Ø.mm



CODE: MC30190.Ø.mm



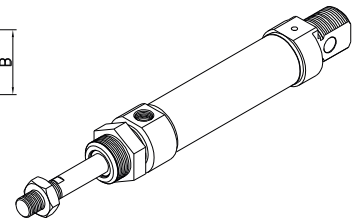
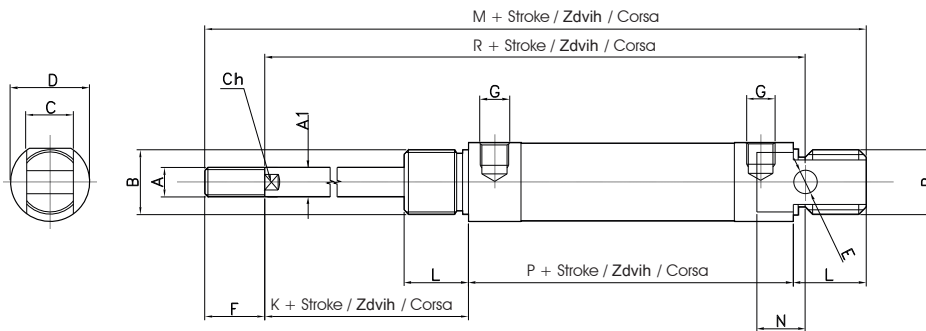
Ø	A	A1	B	C	D	E	F	G	K	L	M	N	P	R	CH
16	M6	6	M16x1.5	12	21	6	16	M5	22	17	109	9	55	82	5
20	M8	8	M22x1.5	16	27	8	20	1/8 G	24	20	131	12	67	95	7
25	M10x1.25	10	M22x1.5	16	30	8	22	1/8 G	28	22	140	12	68	104	9

Single acting rear spring  
**Jednočinné se zadní pružinou**  
 Semplice effetto molla posteriore

CODE: MC3017M.Ø.mm



CODE: MC30170.Ø.mm



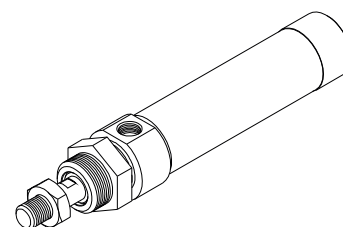
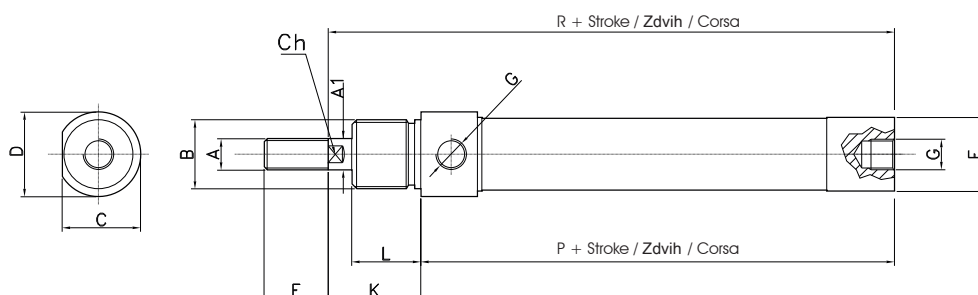
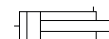
Ø	A	A1	B	C	D	E	F	G	K	L	M	N	P	R	CH
8	M4	4	M12x1.25	8	16	4	12	M5	16	12	104	6	46	82	-
10	M4	4	M12x1.25	8	16	4	12	M5	16	12	111.5	6	46	89.5	-
12	M6	6	M16x1.5	12	19	6	16	M5	22	18	126.5	9	48	97.5	5
16	M6	6	M16x1.5	12	19	6	16	M5	22	18	138	9	53	111	5
20	M8	8	M22x1.5	16	27	8	20	1/8 G	24	20	162.5	12	67	126.5	7
25	M10x1.25	10	M22x1.5	16	30	8	22	1/8 G	28	22	171.5	12	68	135.5	9

Double acting feeding in axis - rear part  
**Dvojčinný vstup vzduchu ze středu zadního víka**  
*Doppio effetto alimentazione in asse parte posteriore*

CODE: MC5018M.Ø.mm



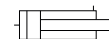
CODE: MC50180.Ø.mm



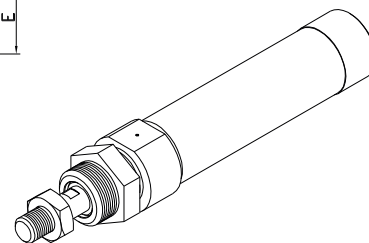
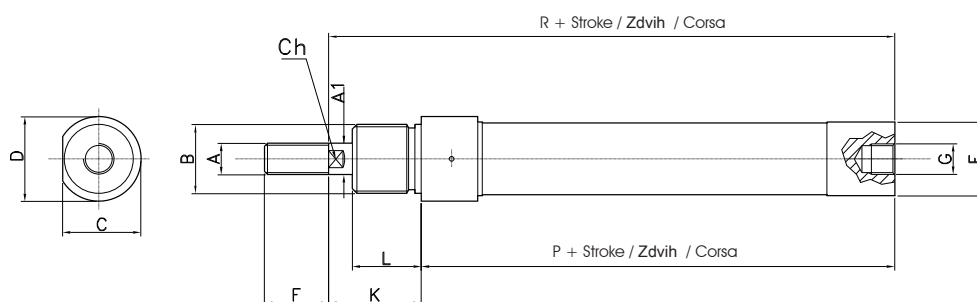
Ø	A	A1	B	C	D	E	F	G	K	L	P	R	CH
16	M6	6	M16x1.5	18	19	17.2	16	M5	22	18	52	74	5
20	M8	8	M22x1.5	25.5	27	22.2	20	1/8 G	24	20	65	89	7
25	M10x1.25	10	M22x1.5	28.5	30	27	22	1/8 G	28	22	66	94	9

Single acting front spring feeding in axis - rear part  
**Jednočinný vstup vzduchu ze středu zadního víka**  
*Semplice effetto molla anteriore alimentazione in asse parte posteriore*

CODE: MC5016M.Ø.mm



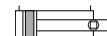
CODE: MC50160.Ø.mm



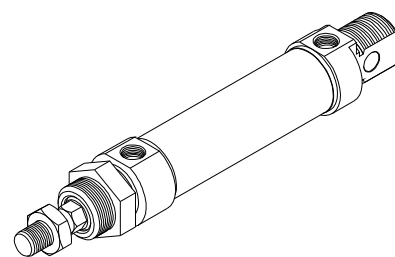
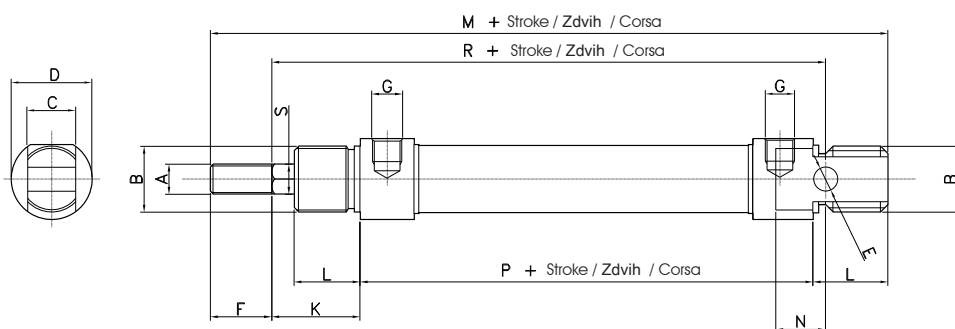
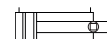
Ø	A	A1	B	C	D	F	G	K	L	P	R	CH
16	M6	6	M16x1.5	18	19	16	M5	22	18	52	74	5
20	M8	8	M22x1.5	25.5	27	20	1/8 G	24	20	65	89	7
25	M10x1.25	10	M22x1.5	28.5	30	22	1/8 G	28	22	66	94	9

Double acting anti rotation rod  
**Dvojčinná anti rotační pístní tyč**  
 Doppio effetto antirotazione stelo esagonale

CODE: MC6018M.Ø.mm



CODE: MC60180.Ø.mm



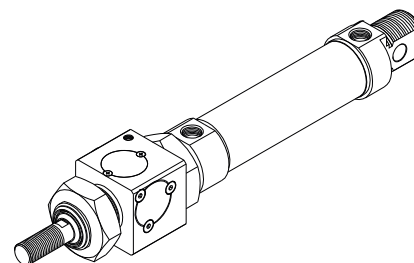
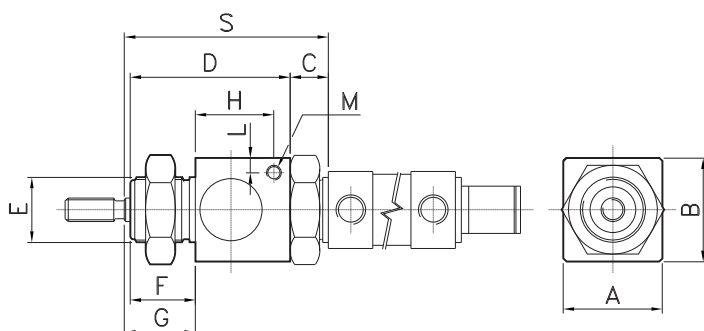
Ø	A	A1	B	C	D	E	F	G	K	L	M	N	P	R	CH
16	M6	6	M16x1.5	12	19	6	16	M5	22	18	109	9	53	82	6
20	M8	8	M22x1.5	16	27	8	20	1/8 G	24	20	131	12	67	95	8
25	M10x1.25	10	M22x1.5	16	30	8	22	1/8 G	28	22	140	12	68	104	10

Double acting with rod lock  
**Dvojčinné blokačním zařízením**  
 Doppio effetto con bloccastelo

CODE: MC6018M.Ø.mm



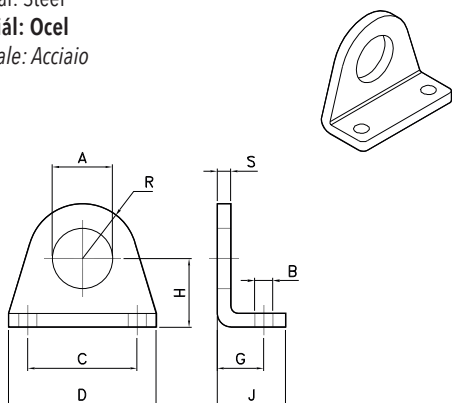
CODE: MC60180.Ø.mm



Ø	A	B	C	D	E	F	G	H	L	M	S	T
20	34	35	13	54	M22x1.5	22	26	27	5	M5	71	47
25	34	35	13	54	M22x1.5	22	26	27	5	M5	73	45

PEDESTAL  
**BOČNÍ PATKA**  
 PIEDINO

Material: Steel  
**Materiál: Ocel**  
 Materiale: Acciaio

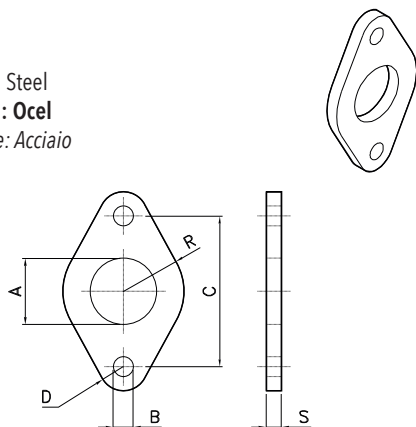


CODE	Ø
AR415508	8-10
AR415512	12-16
AR415520	20-25

Ø	A	B	C	D	G	H	J	R	S
8-10	12	4.5	25	35	11	16	16	10	3
12-16	16	5.5	32	42	14	20	20	12.5	4
20-25	22	6.6	40	54	17	25	25	20	5

FLANGE  
**ČELNÍ (ZADNÍ) DESKA**  
 FLANGIA

Material: Steel  
**Materiál: Ocel**  
 Materiale: Acciaio

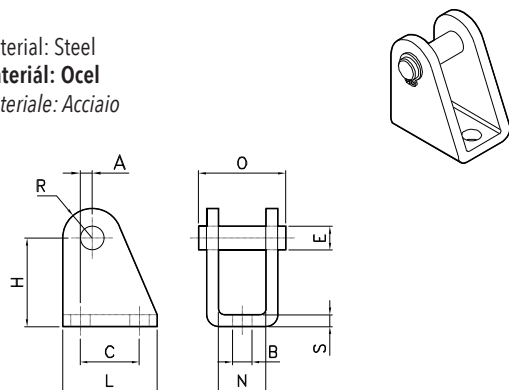


CODE	Ø
AR415708	8-10
AR415712	12-16
AR415720	20-25

Ø	A	B	C	D	R	S
8-10	12	4.5	30	5	11	3
12-16	16	5.5	40	6	15	4
20-25	22	6.6	50	8	20	5

FEMALE HINGE  
**ZADNÍ KYVNÉ LOŽISKO**  
 CERNIERA FEMMINA

Material: Steel  
**Materiál: Ocel**  
 Materiale: Acciaio

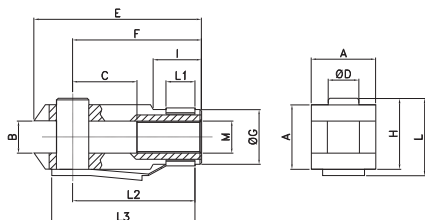
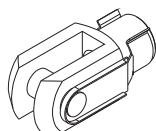


CODE	Ø
AR415408	8-10
AR415412	12-16
AR415420	20-25

Ø	B	E	C	H	L	N	O	R	S
8-10	4.5	4	12.5	24	20	8.1	17	5	2.5
12-16	5.5	6	15	27	25	12.1	23	7	3
20-25	6.6	8	20	30	32	16.1	29.5	10	4

YOKE WITH CLIP  
**VIDLICE NA PÍSTNICI**  
 FORCELLA CON CLIP

Material: Steel  
**Materiál: Ocel**  
 Materiale: Acciaio

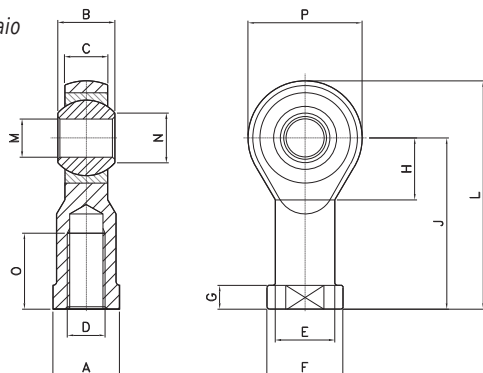


CODE	Ø
AR40670	8-10
AR40671	12-16
AR40672	20
AR40673	25

Ø	A	B	C	D	E	F	G	H	I	M	L	L1	L2	L3
8/10	8	4	8	4	21	16	8	9	6	M4	11	5	15	19
12/16	12	6	12	6	31	24	10	14	9	M6	16	6	23	28
20	16	8	16	8	42	32	14	19	12	M8	22	8	31	37
25	20	10	20	10	52	40	18	23	15	M10x1.25	26	10	39	46

ROD ENDS  
**OKO KYVNÉ**  
 TESTA SNODO

Material: Steel  
**Materiál: Ocel**  
 Materiale: Acciaio

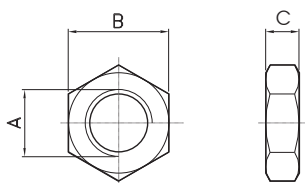


CODE	Ø
AR40655	8-10
AR40656	12-16
AR40657	20
AR40660	25

Ø	A	B	C	D	E	F	G	H	J	L	M	N	O	P
8-10	9	8	6	M4	9	11	4	10	27	36	5	7.7	10	18
12-16	11	9	6.75	M6	10	13	5	11	30	40	6	8.9	12	20
20	14	12	9	M8	12.5	16	5	13	36	48	8	10.4	16	24
25	17	14	10.5	M10x1.25	15	19	6.5	15	43	57	10	12.9	20	28

NUT FOR ROD  
**MATICE NA PÍSTNICI**  
 DADO PER STELO

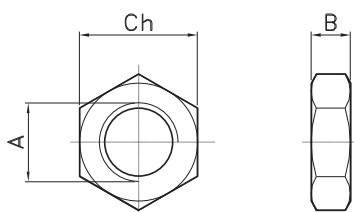
Material: Steel  
**Materiál: Ocel**  
 Materiale: Acciaio



CODE	Ø	A	B	C
DAN4	8-10	M4	7	3
DAN6	12-16	M6	10	5
DAN8	20	M8	13	6.5
DAN10X1,25	25	M10x1.25	17	8

NUT FOR CAP  
**MATICE NA VÁLEC**  
 DADO PER TESTATA

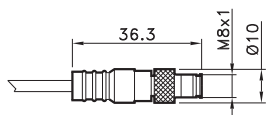
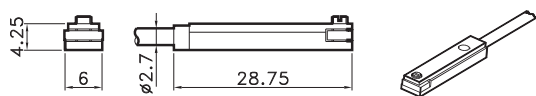
Material: Steel  
**Materiál: Ocel**  
 Materiale: Acciaio



CODE	Ø
DAD12X1,25	8-10
DAD16X1,5	12-16
DAD22X1,5	20-25

Ø	A	B	Ch
8-10	M12x1.25	7	19
12-16	M16x1.5	8	24
20-25	M22x1.5	10	32

T SWITCH  
**MAGNETICKÝ SNÍMAČ POLOHY**  
 SENSORE A T



4= black / **Černá** / nero  
 1= brown / **hnědý** / hnědýje  
 3= blue / **modrý** / azzurro

CODE

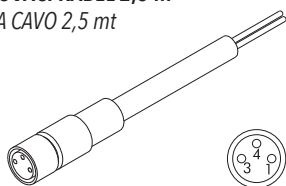
AR4023010	REED (MT.2,5) / <b>REED (MT.2,5)</b> / REED (MT.2,5)
AR4023020	HALL (MT.2,5) / <b>HALL (MT.2,5)</b> / HALL (MT.2,5)
AR4023110	REED + M8 (CM 30) / <b>REED + M8</b> / REED + M8 (CM 30)
AR4023120	HALL + M8 (CM 30) / <b>HALL + M8</b> / HALL + M8 (CM 30)

For technical data see page 1.62

**Technické údaje viz strana 1.62**

Per i dati tecnici vedere pag. 1.62

EXTENSION CABLE 2,5 mt  
**PRODLUŽOVACÍ KABEL 2,5 m**  
 PROLUNGA CAVO 2,5 mt

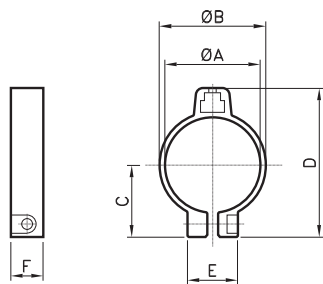
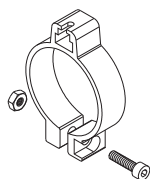


4= black / **Černá** / nero  
 1= brown / **hnědý** / hnědýje  
 3= blue / **modrý** / azzurro

CODE

AR4300	WITH M8 2 WIRES / <b>S M8 2 WIRES</b> / CON M8 2 FILI
AR4301	WITH M8 3 WIRES / <b>S M8 3 WIRES</b> / CON M8 3 FILI

ADAPTOR FOR T SWITCH  
**DRŽÁK PRO SNÍMAČ POLOHY**  
 ADATTATORE SENSORE A T



CODE

CODE	Ø
AR4199008	8
AR4199010	10
AR4199012	12
AR4199016	16
AR4199020	20
AR4199025	25

Ø	A	B	C	D	E	F
8	9.3	12.3	11.1	23.9	12.3	9
10	11.3	14.3	12.2	25.9	12.3	9
12	13.3	16.3	13.2	28	12.3	9
16	17.3	20.3	15.3	32.1	12.3	9
20	21.3	24.3	17.4	36.2	14	9
25	26.5	29.5	20	41.4	14	9