

Pneumatic and solenoid valves complying with NAMUR norms (direct assembly). Valves are entirely made in aluminium, to improve the solidity and the durability. Available size is 1/4 and available functions are 3/2 and 5/2.

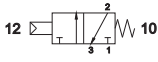
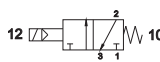
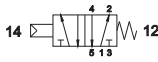
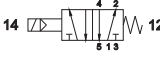
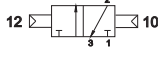
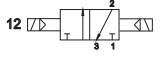


**Pneumatiké a el. magnetické ventily splňující normy NAMUR (přímá montáž). Ventily jsou vyráběny výhradně z hliníku, aby se zlepšila pevnost a trvanlivost. Dostupná velikost je 1/4 a dostupné funkce jsou 3/2 a 5/2.**

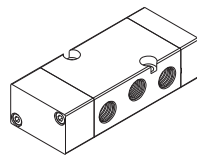
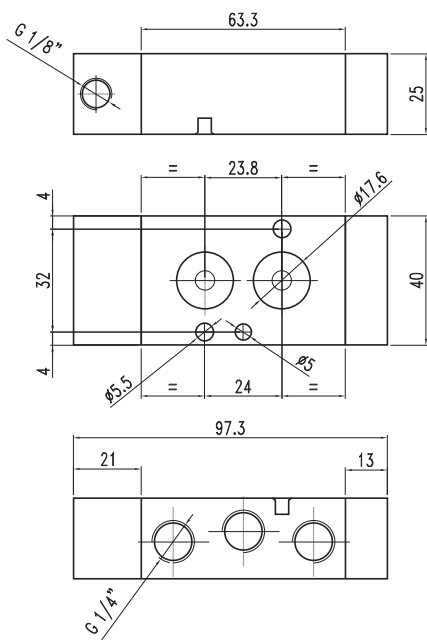
Valvole ad azionamento pneumatico ed elettrico con posa di montaggio diretta NAMUR. Costruzione interamente in alluminio per aumentare la robustezza e la durata nel tempo. Disponibili nella taglia 1/4 e nelle funzioni 3/2 e 5/2.

## TECHNICAL DATA / TECHNICKÁ DATA / DATI TECNICI

Flow rate 6 bar $\Delta p$ 1 bar / <b>Debit à 6 bar <math>\Delta p</math> 1bar</b> / Portata a 6 bar $\Delta p$ 1bar	1100 NI/min
Nominal orifice / <b>Jmenovitý průměr</b> / Diametro nominale	7.5mm
Response time pneumatic / <b>Doba odezvy pneu.</b> / Tempi di risposta pneumatico	
• monostable / <b>monostabilní</b> / monostabile	TRA 7ms / TRR 15ms
• bistable / <b>bistabilní</b> / bistabile	TRA 7ms / TRR 7ms
Response time solenoid / <b>Doba odezvy elect.</b> / Tempi di risposta elettrico	
• monostable / <b>monostabilní</b> / monostabile	TRA 19ms / TRR 45ms
• bistable / <b>bistabilní</b> / bistabile	TRA 22ms / TRR 22ms
Pressure range / <b>Pracovní tlak</b> / Pressione di esercizio	
• monostable / <b>monostabilní</b> / monostabile	2.5 ÷ 10bar
• bistable / <b>bistabilní</b> / bistabile	1 ÷ 10bar
Temperature range / <b>Provozní teplota</b> / Temperatura di esercizio	-10°C / +60°C

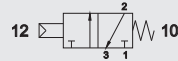
## FAST SELECT / RYCHLÝ VÝBĚR / SELEZIONE RAPIDA

	Pneum. monostable / <b>Pneum. monostabilní</b> / Pneum.monostabile <b>VU43PNMNC-T</b> 3/2    1/4    NC / NZ / NC		Solenoid monostable / <b>El.mag.monostabilní</b> / Elettri. monostabile <b>VU43ELMNC-T</b> 3/2    1/4    NC / NZ / NC
	Pneum. monostable / <b>Pneum. monostabilní</b> / Pneum.mon. <b>VU45PNM00-T</b> 5/2    1/4		Solenoid monostable / <b>El.mag.monostabilní</b> / Elettri. monostabile <b>VU45ELM00-T</b> 5/2    1/4
	Pneum. bistable / <b>Pneum. bistabilní</b> / Pneum.bistabile <b>VU43PNB00-T</b> 3/2    1/4		Solenoid bistable / <b>El.mag. bistabilní</b> / Elettri. bistabile <b>VU43ELB00-T</b> 3/2    1/4
	Pneum. bistable / <b>Pneum. bistabilní</b> / Pneum.bistabile <b>VU45PNB00-T</b> 5/2    1/4		Solenoid bistable / <b>El.mag. bistabilní</b> / Elettri. bistabile <b>VU45ELB00-T</b> 5/2    1/4



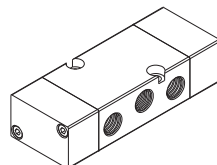
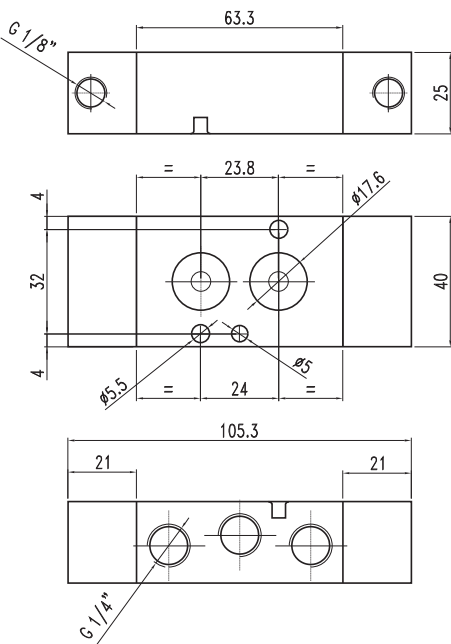
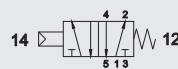
1/4 - 3/2 NC pneumatic pilot monostable  
**1/4 - 3/2 NZ pneumaticky ovládaný monostabilní**  
 1/4 - 3/2 NC comando pneumatico monostabile

CODE  
**VU43PNMNC-T**



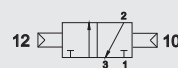
1/4 - 5/2 pneumatic pilot monostable  
**1/4 - 5/2 pneumaticky ovládaný monostabilní**  
 1/4 - 5/2 comando pneumatico monostabile

CODE  
**VU45PNM00-T**



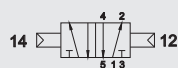
1/4 - 3/2 pneumatic pilot bistable  
**1/4 - 3/2 pneumaticky ovládaný bistabilní**  
 1/4 - 3/2 comando pneumatico bistabile

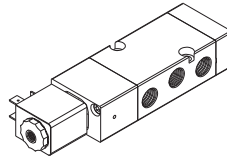
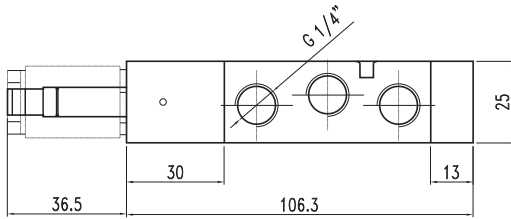
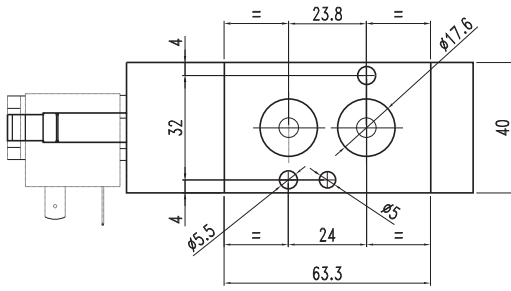
CODE  
**VU43PNB00-T**



1/4 - 5/2 pneumatic pilot bistable  
**1/4 - 5/2 pneumaticky ovládaný bistabilní**  
 1/4 - 5/2 comando pneumatico bistabile

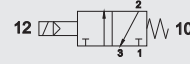
CODE  
**VU45PNB00-T**





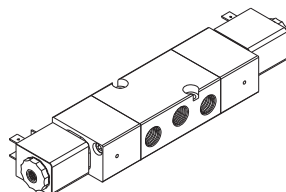
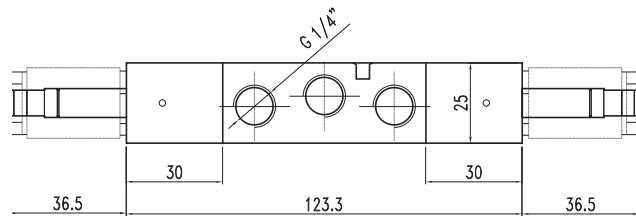
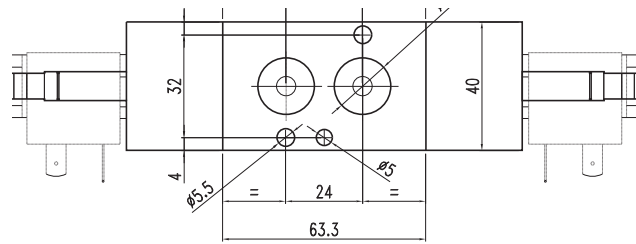
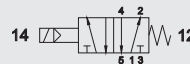
1/4 - 3/2 NC solenoid pilot monostable  
**1/4 - 3/2 NZ elektromagnetický monostabilní**  
 1/4 - 3/2 NC comando elettrico monostabile

CODE  
**VU43ELMNC-T**



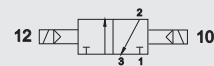
1/4 - 5/2 solenoid pilot monostable  
**1/4 - 5/2 elektromagnetický monostabilní**  
 1/4 - 5/2 comando elettrico monostabile

CODE  
**VU45ELM00-T**



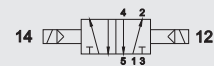
1/4 - 3/2 solenoid pilot bistable  
**1/4 - 3/2 elektromagnetický bistabilní**  
 1/4 - 3/2 comando elettrico bistabile

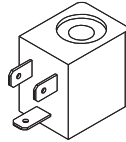
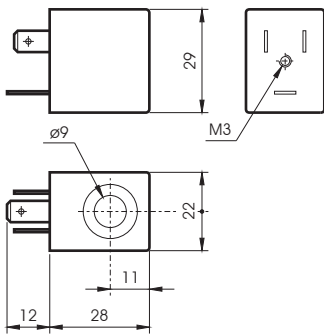
CODE  
**VU43ELB00-T**



1/4 - 5/2 solenoid pilot bistable  
**1/4 - 5/2 elektromagnetický bistabilní**  
 1/4 - 5/2 comando elettrico bistabile

CODE  
**VU45ELB00-T**



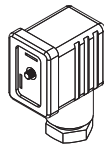
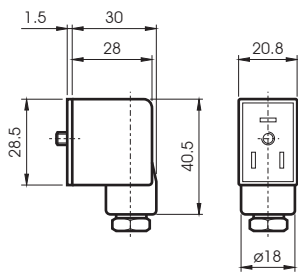


COILS  
CÍVKY  
BOBINE

CODE	Tension Napětí Tensione	POWER / NAPÁJENÍ / ASSORBIMENTO	
		Rated odpor a regime	Inrush Přívál di spunto
B04011012	12 VDC	3W	
B04011024	24 VDC	3W	
B04012024	24 VAC	5VA	7,5VA
B04012110	110 VAC	5VA	7,5VA
B04012220	220 VAC	5VA	7,5VA

TECHNICAL SPECIFICATIONS  
TECHNICKÁ DATA  
CARATTERISTICHE TECNICHE

Tension tolerance / Tolerance napětí / Tolleranza di tensione	+ 10%
Protection with connector / Ochrana konektorem / Protezione con connettore	IP65
Max working temperature / Maximální teplota použití / Temperatura max di esercizio	+ 50°C
Duty cycle / Čas zapnutí / Inserimento	ED 100%



CONNECTORS  
KONEKTORY  
CONNETTORI

CODE	DES.
AR40696	STANDARD
VX0014	LED 24V
VX0015	LED 110V
VX0016	LED 220V
VX0017	LED+VDR 24V
VX0018	LED+VDR 110V
VX0019	LED+VDR 220V