

POS short stroke cylinders CD series are engineered to guarantee good performances in very reduced spaces. They are available in different version: single or double acting and through rod. The body has grooves for the installation of sensors.

POS válce s krátkým zdvihem CD série jsou zkonstruovány tak, aby zaručovaly dobré výkony ve velmi omezených prostorech. Jsou k dispozici v různých verzích: jednočinné nebo dvojitěnné a průchozí. Tělo má drážky pro instalaci senzorů.

I cilindri corsa breve, sono stati realizzati per garantire buone prestazioni in spazi molto ridotti. Sono disponibili numerose versioni tra cui: semplice o doppio effetto e con stelo passante. Sul corpo dei cilindri sono ricavate delle cave dove si allungano i sensori.

ORDERING CODE / OBJEDNÁVKOVÝ KÓD / CHIAVE DI CODIFICA

C D 0 0 1 0 0 0 0 0 0

Stroke / Zdvih / Corsa

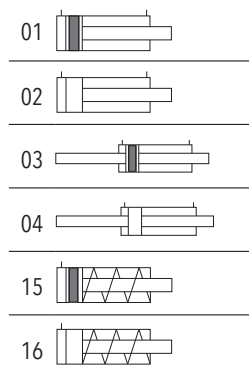
Ø cylinder / Ø válec / Ø cilindro

1= Female rod / Ženský prut / Stelo femmina
2= Male rod / Mužský prut / Stelo maschio

VERSION / VERZE / VERSIONE

01 = Double acting magnetic / Dvojitěnné magnetický / Doppio effetto magnetico
02 = Double acting no magnetic / Dvojitěnný bez magnetu / Doppio effetto non magnetico
03 = Through rod magnetic / Dvojitěnný s průběžnou pístnicí s magnetem / Stelo passante magnetico
04 = Through rod no magnetic / Dvojitěnný s průběžnou pístnicí bez magnetu / Stelo passante non magnetico
15 = Single acting front spring magnetic / Jednočinné s přední pružinou a magnetem / Semplice effetto molla anteriore magn.
16 = Single acting front spring no magnetic / Jednočinné s přední pružinou bez magnetu / Semplice effetto molla anteriore non magnetico

VERSION / VERZE / VERSIONE



STANDARD STROKES / STANDARDNÍ ZDVIHY / CORSE STANDARD

Double acting / Dvojitěnné / Doppio effetto

Ø16 mm 5-10-15-20-25-30

Ø20 mm 5-10-15-20-25-30-35-40-45-50

Ø25 mm 5-10-15-20-25-30-35-40-45-50

Ø32 mm 5-10-15-20-25-30-35-40-45-50-75-100

Ø40 mm 5-10-15-20-25-30-35-40-45-50-75-100

Ø50 mm 10-15-20-25-30-35-40-45-50-75-100

Ø63 mm 10-15-20-25-30-35-40-45-50-75-100

Ø80 mm 10-15-20-25-30-35-40-45-50-75-100

Ø100 mm 10-15-20-25-30-35-40-45-50-75-100

Single acting / Jedný efekt / Semplice effetto

Ø16 mm 5-10

Ø20 mm 5-10

Ø25 mm 5-10

Ø32 mm 5-10

Ø40 mm 5-10

Ø50 mm 10-20

TECHNICAL DATA / TECHNICKÁ DATA / DATI TECNICI

Fluid / Médium / Fluido

Lubricated or non lubricated air / Mazaný nebo nemazaný vzduch / Aria con o senza lubrificazione

Operating temperature range / Rozsah provozních teplot / Temperatura di esercizio

-20°C / +80°C

Max operating pressure / Maximální provozní tlak / Pressione massima di esercizio

10 bar

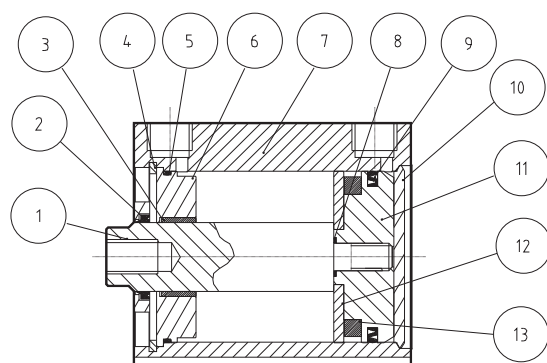
Force / Síly / Forze svilupate

Technical informations page / Stránka technických informací / Pagina dati tecnici

Air consumption / Spotřeba vzduchu / Consumo aria

Technical informations page / Stránka technických informací / Pagina dati tecnici

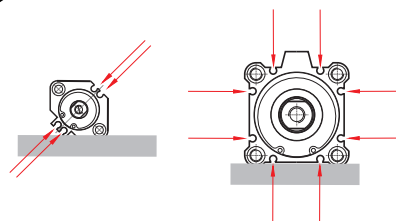
COMPONENTS / KOMPONENTY / COMPONENTI



DESCRIPTION / POPIS / DESCRIZIONE	MATERIAL / MATÉRIEL / MATERIALE
1 rod / pístní tyč / stelo	steel C 40 chromed / ocel C40 chromovaná / acciaio C40
2 rod seal / těsnění pístní tyče / guarn. stelo	polyurethane / polyurethan / poliuretano
3 guide bush / vodící pouzdro / bussola guida	steel + PTFE / inox + PTFE / acciaio + PTFE
4 seeger ring / segerovka / anello seeger	steel / ocel / acciaio
5 o-ring / O-kroužek / o-ring	NBR
6 front cap / přední víčko / testata anteriore	aluminium / hliník / alluminio
7 body / tělesný válec / corpo	aluminium / hliník / alluminio
8 o-ring / O-kroužek / o-ring	NBR
9 piston seal / těsnění pístu / guarn. pist.	polyurethane / polyurethan / poliuretano
10 rear cap / zadní víčko / testata post.	aluminium / hliník / alluminio
11 piston / píst / pistone	aluminium / hliník / alluminio
12 piston disk / pístní disk / piattello pistone	aluminium / hliník / alluminio
13 magnet / magnet / magnete	plastoferrite

Rod diameter increased
Průměr pístní tyče se zvětšil
Diametro stelo maggiorato

Sensors can be mounted on all sides
Senzory lze namontovat ze všech stran
Possibilità di inserimento sensore su tutti i lati

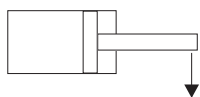


Front head treated with anti-wear treatment
Přední hlava ošetřená proti opotřebení
Testata anteriore con trattamento anti-usura

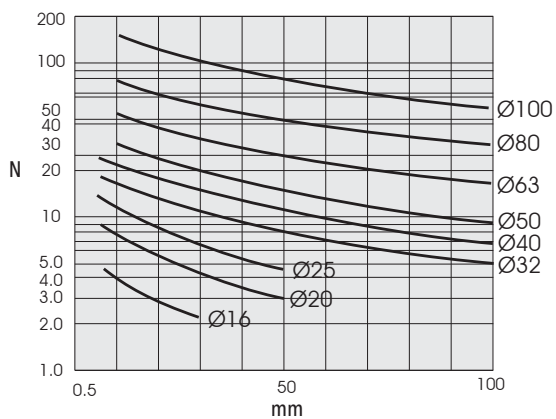
Highly compact dimensions thanks to a special rear head mounting.
Vysoce kompaktní rozměry díky speciální montáži na zadní hlavu.
Dimensioni molto contenute grazie ad un sistema di pressatura del zadní víčkoello. posteriore.

Low friction rod and piston seals
Těsnění s nízkým třením a píst
Guarnizione stelo e pistone a basso attrito

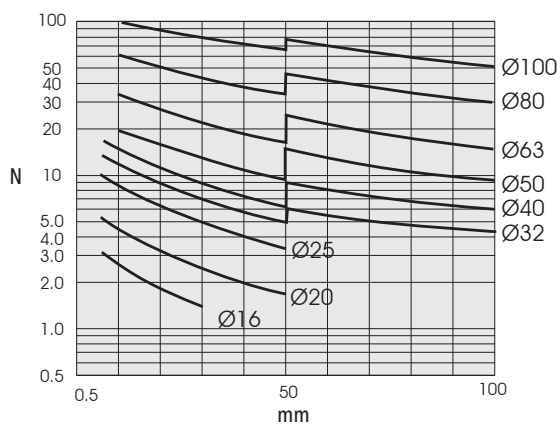
ADMISSIBLE LOAD / PŘÍPUSTNÉ ZATÍŽENÍ / CARICO AMMISSIBILE



MAGNETIC / MAGNETICKÝ / MAGNETICO

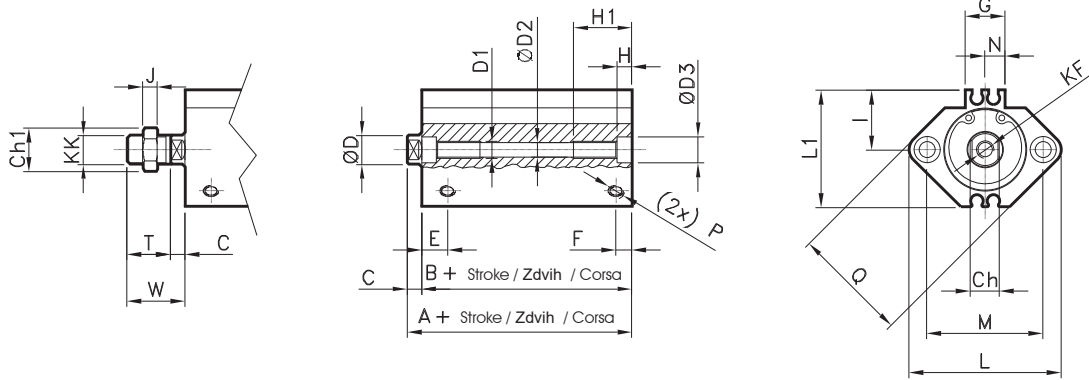
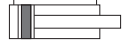


NO MAGNETIC / NEMAGNETICKÉ / NON MAGNETICO

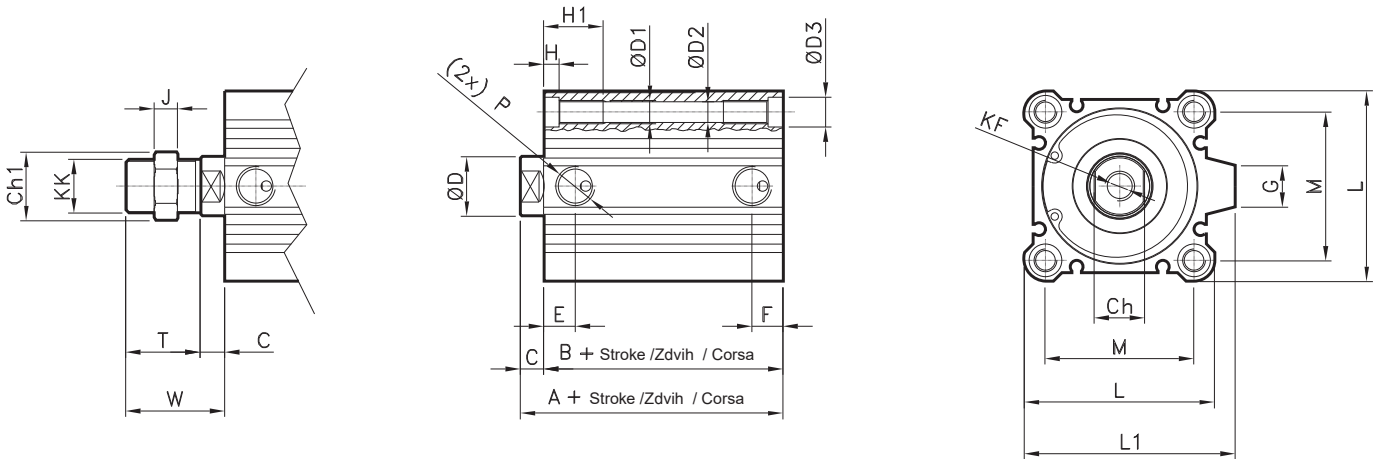


Double acting magnetic
Dvojčinné magnetický
Doppio effetto magnetico

CODE: CDO111.Ømm



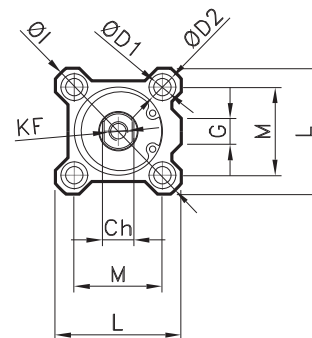
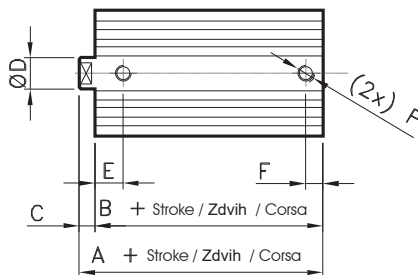
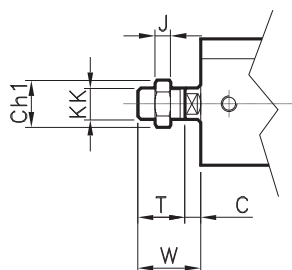
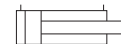
Ø	A	B	C	Ch	Ch1	ØD	ØD1	ØD2	ØD3	E	F	G	H	H1	I	J	KF	KK	L	L1	M	N	P	Q	T	W
16	34	30.5	3.5	6	10	8	M4	3.5	6.5	10	5.5	13.2	3.5	11	15	5	M4	M6	37	29.5	28	6.6	M5	29	12	15.5
20	36	31.5	4.5	8	13	10	M6	5.5	9	8	5.5	13.6	7	17	18	6	M5	M8	47	35.5	36	6.8	M5	36	14	18.5
25	37.5	32.5	5	10	17	12	M6	5.5	9	9	5.5	13.6	7	17	21	6	M6	M10x1.25	52	40.5	40	6.8	M5	40	17.5	22.5



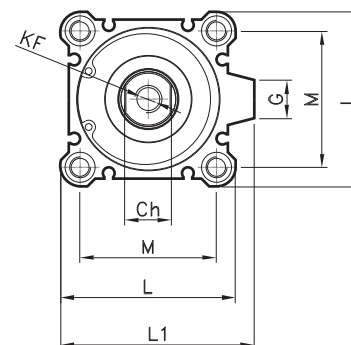
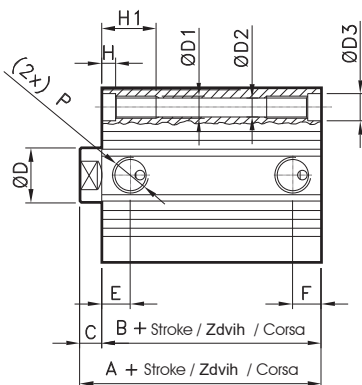
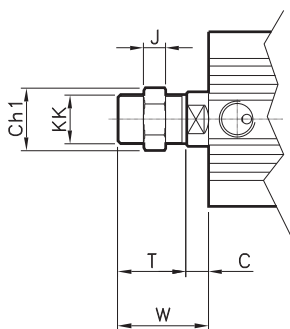
Ø	A	B	C	Ch	Ch1	ØD	ØD1	ØD2	ØD3	E	F	G	H	H1	J	KF	KK	L	L1	M	P	T	W
32	40	33	7	14	22	16	M6	5.5	9	10	7.5	14	7	17	8	M8	M14x1.5	45	49.5	34	1/8	23.5	28.5
40	46.5	39.5	7	14	22	16	M6	5.5	9	12.5	7.5	15	7	17	8	M8	M14x1.5	52	57	40	1/8	23.5	28.5
50	48.5	40.5	8	17	27	20	M8	6.6	11	10.5	10.5	19	8	22	11	M10	M18x1.5	64	71	50	1/4	28.5	33.5
63	54	46	8	17	27	20	M10	9	14	15	10.5	19	10.5	28.5	11	M10	M18x1.5	77	84	60	1/4	28.5	33.5
80	63.5	53.5	10	22	32	25	M12	11	17.5	16	12.5	25	13.5	35.5	13	M16	M22x1.5	98	104	77	3/8	35.5	43.5
100	75	63	12	27	36	30	M12	11	17.5	23	13	25	13.5	35.5	16	M20	M26x1.5	117	123.5	94	3/8	35.5	43.5

Double acting no magnetic
Dvojčinné bez magnetu
Doppio effetto non magnetico

CODE: CD0211.Ø.mm



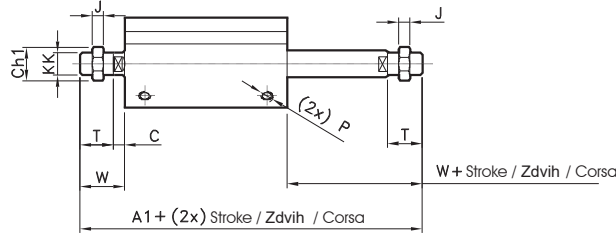
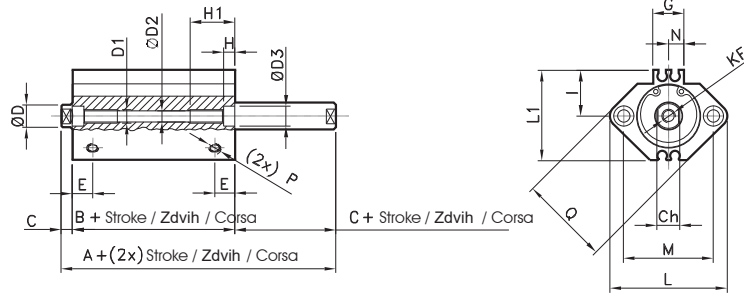
Ø	A	B	C	Ch	Ch1	ØD f7	ØD1	ØD2	E	F	G	I	J	KF	KK	L	M	P	T	W
16	22	18.5	3.5	6	10	8	3.5	6.5x3.5	8	5.5	11	38	5	M4	M6	29	20	M5	12	15.5
20	24	19.5	4.5	8	13	10	5.5	9x7	8	5.5	11	47	6	M5	M8	36	25.5	M5	14	18.5
25	27.5	22.5	5	10	17	12	5.5	9x7	9	5.5	11	52	6	M6	M10x1.25	40	28	M5	17.5	22.5



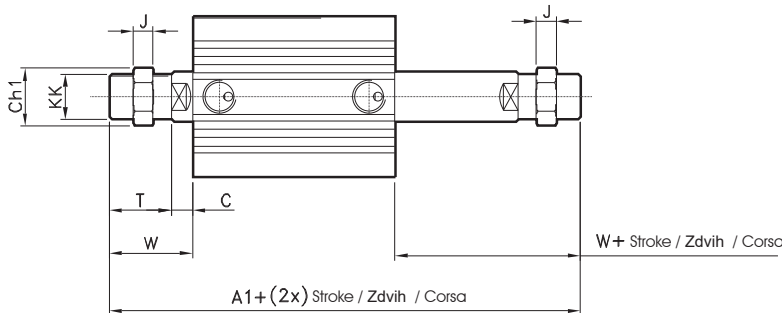
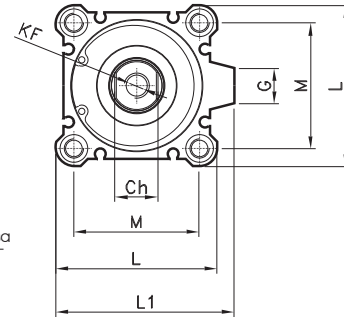
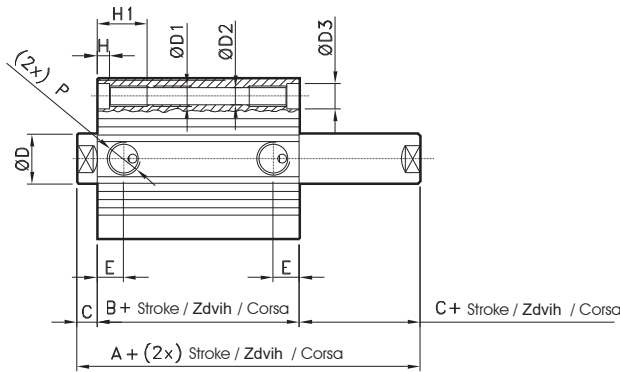
Ø	A (Stroke / Zdvih / Corsa)		B (Stroke / Zdvih / Corsa)		C	CH	CH1	ØD	ØD1	ØD2	ØD3	E	F	G	H	H1	J	KF	KK	L	L1	M	P	T	W
	30 (5+50)	46 (75÷100)	23 (5+50)	33 (75÷100)																					
32	30 (5+50)	46 (75÷100)	23 (5+50)	33 (75÷100)	7	14	22	16	M6	5.5	9	10	7.5	14	7	17	8	M8	M14x1.5	45	49.5	34	1/8	23.5	28.5
40	36.5 (5+50)	46.5 (75÷100)	29.5 (5+50)	39.5 (75÷100)	7	14	22	16	M6	5.5	9	12.5	7.5	15	7	17	8	M8	M14x1.5	52	57	40	1/8	23.5	28.5
50	38.5 (10÷50)	48.5 (75÷100)	30.5 (10÷50)	40.5 (75÷100)	8	17	27	20	M8	6.6	11	10.5	10.5	19	8	22	11	M10	M18x1.5	64	71	50	1/4	28.5	33.5
63	44 (10÷50)	54 (75÷100)	36 (10÷50)	46 (75÷100)	8	17	27	20	M10	9	14	15	10.5	19	10.5	28.5	11	M10	M18x1.5	77	84	60	1/4	28.5	33.5
80	53.5 (10÷50)	63.5 (75÷100)	43.5 (10÷50)	53.5 (75÷100)	10	22	32	25	M12	11	17.5	16	12.5	25	13.5	35.5	13	M16	M22x1.5	98	104	77	3/8	35.5	43.5
100	65 (10÷50)	75 (75÷100)	53 (10÷50)	63 (75÷100)	12	27	36	30	M12	11	17.5	23	13	25	13.5	35.5	16	M20	M26x1.5	117	123.5	94	3/8	35.5	43.5

Through rod magnetic
Dvojčinné s průběžnou pístnicí
Stelo passante magnetico

CODE: CD0311.Ø.mm



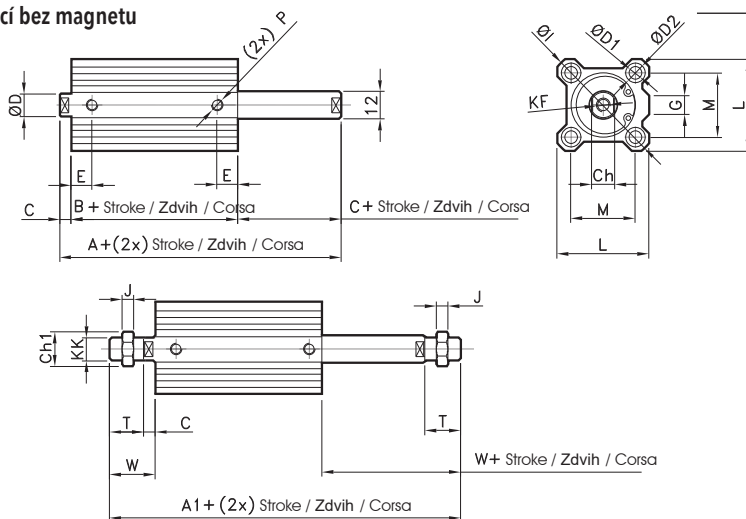
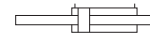
Ø	A	B	C	CH	CH1	ØD f7	ØD1	ØD2	ØD3	E	G	H	H1	I	J	KF	KK	L	L1	M	N	P	Q	T	W
16	43	36	3.5	6	10	8	M4	3.5	6.5	10	13.2	3.5	11	15	5	M4	M6	37	29.5	28	6.6	M5	29	12	15.5
20	47	38	4.5	8	13	10	M6	5.5	9	8	13.6	7	17	18	6	M5	M8	47	35.5	36	6.8	M5	36	14	18.5
25	49	39	5	10	17	12	M6	5.5	9	9	13.6	7	17	21	6	M6	M10x1.25	52	40.5	40	6.8	M5	40	17.5	22.5



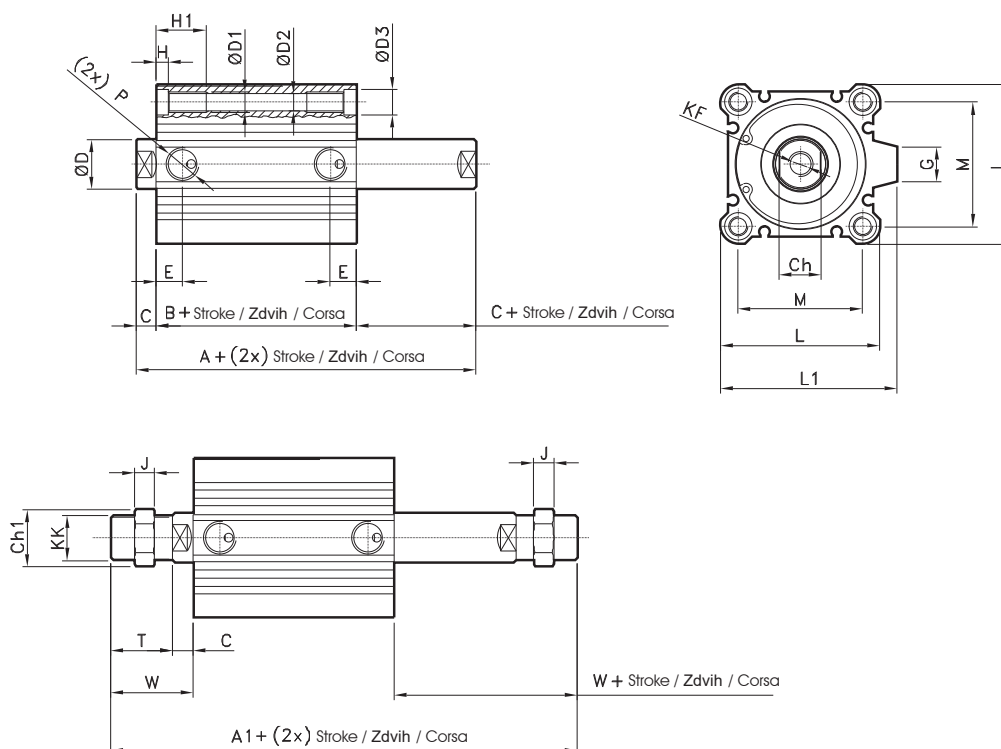
Ø	A	A1	B	c	Ch	Ch1	ØD	ØD1	ØD2	ØD3	E	G	H	H1	J	KF	KK	L	L1	M	P	T	W
32	54.5	97.5	40.5	7	14	22	16	M6	5.5	9	10	14	7	17	8	M8	M14x1.5	45	49.5	34	1/8	23.5	28.5
40	64	107	50	7	14	22	16	M6	5.5	9	12.5	15	7	17	8	M8	M14x1.5	52	57	40	1/8	23.5	28.5
50	66.5	117.5	50.5	8	17	27	20	M8	6.6	11	10.5	19	8	22	11	M10	M18x1.5	64	71	50	1/4	28.5	33.5
63	68	119	52	8	17	27	20	M10	9	14	15	19	10.5	28.5	11	M10	M18x1.5	77	84	60	1/4	28.5	33.5
80	81	148	61	10	22	32	25	M12	11	17.5	16	25	13.5	35.5	13	M16	M22x1.5	98	104	77	3/8	35.5	43.5
100	94.5	157.5	70.5	12	27	36	30	M12	11	17.5	23	25	13.5	35.5	16	M20	M26x1.5	117	123.5	94	3/8	35.5	43.5

Through rod no magnetic
Dvojčinný s průběžnou pístnicí bez magnetu
Stelo passante non magnetico

CODE: CD0411.Ø.mm



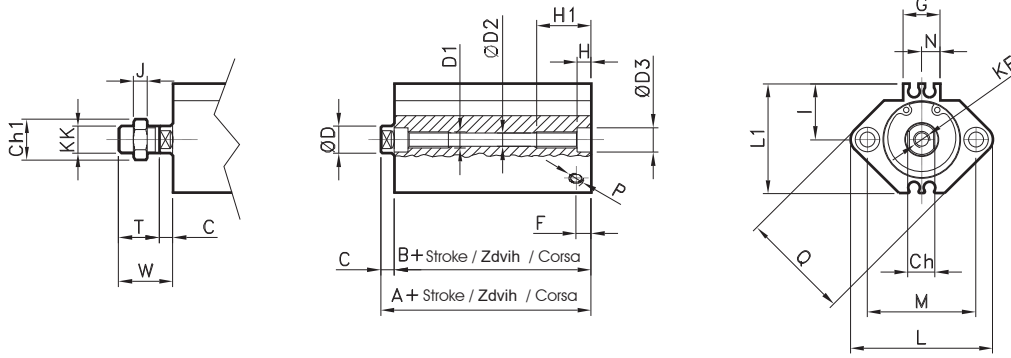
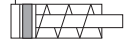
Ø	A	A1	B	C	Ch	Ch1	ØD f7	ØD1	ØD2	E	G	I	J	KF	KK	L	M	P	T	W
16	33	57	26	3.5	6	10	8	3.5	6.5x3.5	10	11	38	5	M4	M6	29	20	M5	12	15.5
20	35	63	26	4.5	8	13	10	5.5	9x7	8	11	47	6	M5	M8	36	25.5	M5	14	18.5
25	39	74	29	5	10	17	12	5.5	9x7	9	11	52	6	M6	M10x1.25	40	28	M5	17.5	22.5



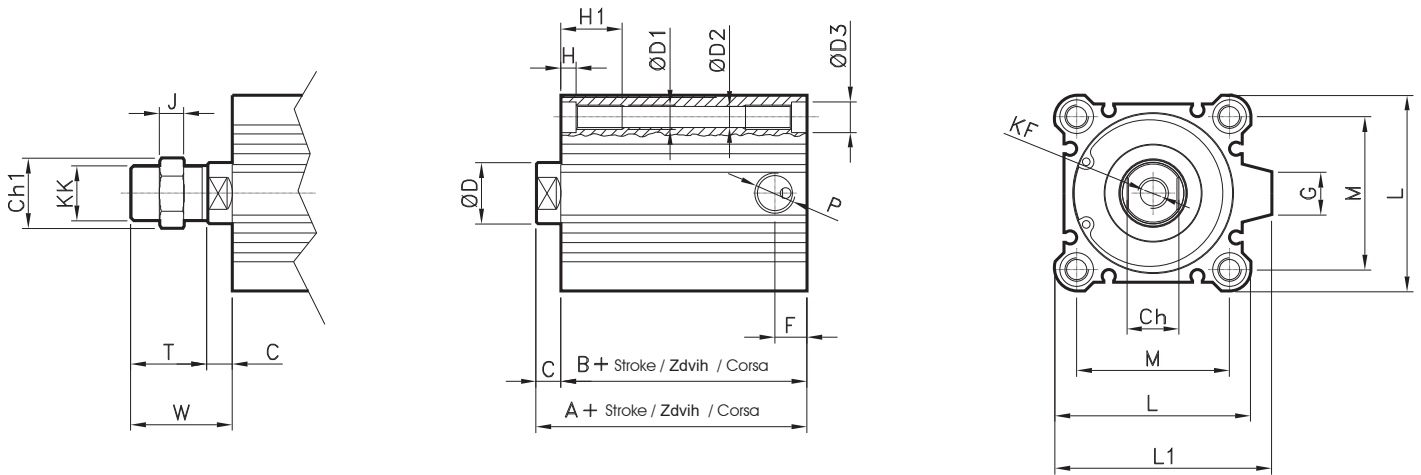
Ø	A (Stroke / Zdvih / Corsa)		A1 (Stroke / Zdvih / Corsa)		B (Stroke / Zdvih / Corsa)		C	CH	CH1	ØD	ØD1	ØD2	ØD3	E	G	H	H1	J	KF	KK	L	L1	M	P	T	W
32	44.5 (5÷50)	54.5 (75÷100)	87.5 (5÷50)	97.5 (75÷100)	30.5 (5÷50)	40.5 (75÷100)	7	14	22	16	M6	5.5	9	10	14	7	17	8	M8	M14x1.5	45	49.5	34	1/8	23.5	28.5
40	54 (5÷50)	64 (75÷100)	97 (5÷50)	107 (75÷100)	40 (5÷50)	50 (75÷100)	7	14	22	16	M6	5.5	9	12.5	15	7	17	8	M8	M14x1.5	52	57	40	1/8	23.5	28.5
50	56.5 (10÷50)	66.5 (75÷100)	107.5 (10÷50)	117.5 (75÷100)	40.5 (10÷50)	50.5 (75÷100)	8	17	27	20	M8	6.6	11	10.5	19	8	22	11	M10	M18x1.5	64	71	50	1/4	28.5	33.5
63	58 (10÷50)	68 (75÷100)	109 (10÷50)	119 (75÷100)	42 (10÷50)	52 (75÷100)	8	17	27	20	M10	9	14	15	19	10.5	28.5	11	M10	M18x1.5	77	84	60	1/4	28.5	33.5
80	71 (10÷50)	81 (75÷100)	138 (10÷50)	148 (75÷100)	51 (10÷50)	61 (75÷100)	10	22	32	25	M12	11	17.5	16	25	13.5	35.5	13	M16	M22x1.5	98	104	77	3/8	35.5	43.5
100	84.5 (10÷50)	94.5 (75÷100)	147.5 (10÷50)	157.5 (75÷100)	60.5 (10÷50)	70.5 (75÷100)	12	27	36	30	M12	11	17.5	23	25	13.5	35.5	16	M20	M26x1.5	117	123.5	94	3/8	35.5	43.5

Single acting magnetic
Jednočinné s přední pružinou a magnetem
Semplice effetto magnetico

CODE: CD1511.Ø.mm



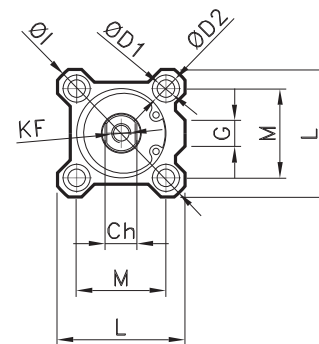
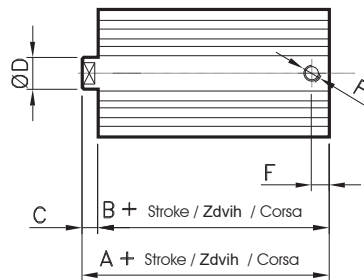
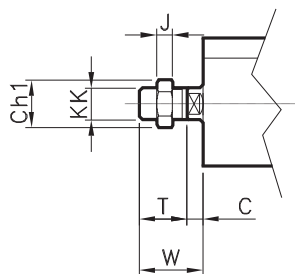
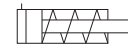
Ø	A	B	C	CH	CH1	ØD f7	ØD1	ØD2	ØD3	F	G	H	H1	I	J	KF	KK	L	L1	M	N	P	Q	T	W
16	34	30.5	3.5	6	10	8	M4	3.5	6.5	5.5	13.2	3.5	11	15	5	M4	M6	37	29.5	28	6.6	M5	29	12	15.5
20	36	31.5	4.5	8	13	10	M6	5.5	9	5.5	13.6	7	17	18	6	M5	M8	47	35.5	36	6.8	M5	36	14	18.5
25	37.5	32.5	5	10	17	12	M6	5.5	9	5.5	13.6	7	17	21	6	M6	M10x1.25	52	40.5	40	6.8	M5	40	17.5	22.5



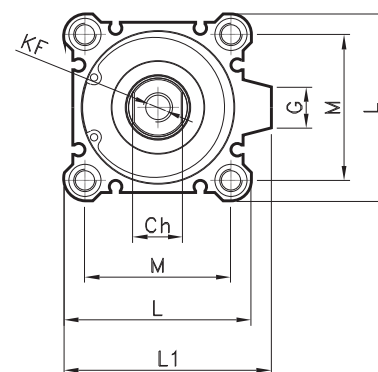
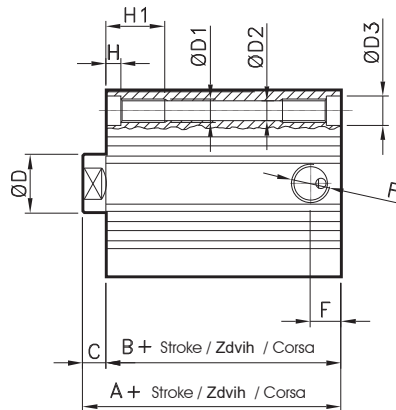
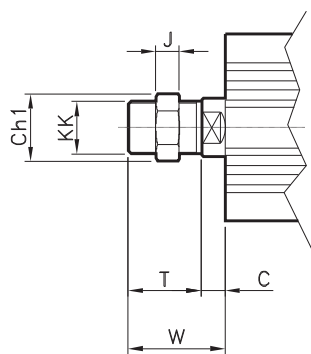
Ø	A	B	C	CH	CH1	ØD f7	ØD1	ØD2	ØD3	F	G	H	H1	J	KF	KK	L	L1	M	P	T	W
32	40	33	7	14	22	16	M6	5.5	9	7.5	14	7	17	8	M8	M14x1.5	45	49.5	34	1/8	23.5	28.5
40	46.5	39.5	7	14	22	16	M6	5.5	9	7.5	15	7	17	8	M8	M14x1.5	52	57	40	1/8	23.5	28.5
50	48.5	40.5	8	17	27	20	M8	6.6	11	10.5	19	8	22	11	M10	M18x1.5	64	71	50	1/4	28.5	33.5

Single acting not magnetic
Jednočinné s přední pružinou bez magnetu
Semplice effetto non magnetico

CODE: CD1611.Ø.mm

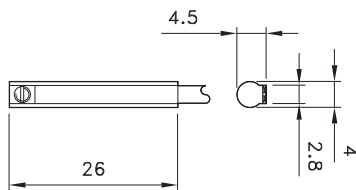


Ø	A	B	C	CH	CH1	ØD	ØD1	ØD2	E	G	I	J	KF	KK	L	M	P	T	W
16	22	18.5	3.5	6	10	8	3.5	6.5x3.5	8	11	38	5	M4	M6	29	20	M5	12	15.5
20	24	19.5	4.5	8	13	10	5.5	9x7	8	11	47	6	M5	M8	36	25.5	M5	14	18.5
25	27.5	22.5	5	10	17	12	5.5	9x7	9	11	52	6	M6	M10x1.25	40	28	M5	17.5	22.5



Ø	A	B	C	CH	CH1	ØD	ØD1	ØD2	ØD3	E	F	G	H	H1	J	KF	KK	L	L1	M	P	T	W
32	30	23	7	14	22	16	M6	5.5	9	10	7.5	14	7	17	8	M8	M14x1.5	45	49.5	34	1/8	23.5	28.5
40	36.5	29.5	7	14	22	16	M6	5.5	9	12.5	7.5	15	7	17	8	M8	M14x1.5	52	57	40	1/8	23.5	28.5
50	38.5	30.5	8	17	27	20	M8	6.6	11	10.5	10.5	19	8	22	11	M10	M18x1.5	64	71	50	1/4	28.5	33.5

ROUND SWITCH
 MAGNETICKÝ SPÍNAČ
 SENSORE TONDO



CODE

AR4018010 REED 2 wires / REED 2 dráty / REED 2 fili

For technical data see page 1.63

Technické údaje viz strana 1.63

Per i dati tecnici vedere pag. 1.63