

Cartridge cylinders of the series CH have extremely reduced dimensions, a threaded body which allows to be installed in any part of the machine and, thanks to the use of an OR, it is possible to obtain the air sealing between threaded hole and cylinder.

Válcové vložky řady CH mají extrémně zmenšené rozměry, závitové tělo, které umožňuje instalaci v jakékoli části stroje a díky použití OR je možné dosáhnout vzduchového utěsnění mezi závitovým otvorem a válcem.

I cilindri a cartuccia della serie CH, hanno dimensioni estremamente contenute, un corpo filettato che gli permette di essere montato in qualsiasi punto della macchina e, con l'utilizzo di un o-ring, è possibile ottenere la tenuta aria tra il foro filettato e il cilindro stesso.

ORDERING CODE / OBJEDNÁVKOVÝ KÓD / CHIAVE DI CODIFICA

C H 1 6 2 0 0 0 0

Stroke / Zdvih / Corsa

Ø cylinder / Ø válec / Ø cilindro

2= NBR seals / těsnění NBR / Guarnizioni in NBR

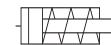
VERSION / VERZE / VERSIONE

16= Single acting threaded piston rod / jednočinný závit na pístnici / Semplice effetto stelo filettato

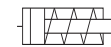
17= Single acting smooth piston rod / jednočinný bez závitu na pístnici / Semplice effetto stelo liscio

VERSION / VERZE / VERSIONE

16



17



STANDARD STROKES / ZDVIH STANDARD / CORSE STANDARD

Single acting / zdvih / Semplice effetto

Ø6 mm 05-10-15

Ø10 mm 05-10-15

Ø16 mm 05-10-15

TECHNICAL DATA / TECHNICKÁ DATA / DATI TECNICI

Fluid / Médium / Fluido

Lubricated or non lubricated air / Mazaný nebo nemazaný vzduch / Aria con o senza lubrificazione

Operating temperature range / Rozsah provozních teplot / Temperatura di esercizio

-20°C / +80°C

Max operating pressure / Maximální provozní tlak / Pressione massima di esercizio

6 bar

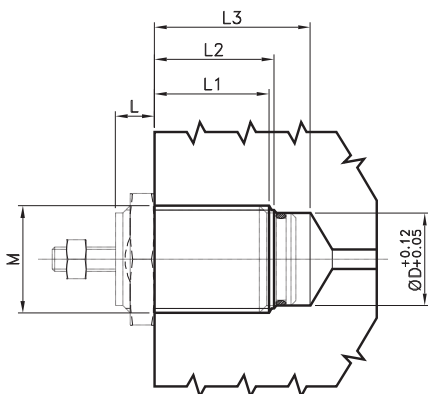
Force / Síly / Forze sviluppate

Technical informations page / Stránka technických informací / Pagina dati tecnici

Air consumption / Spotřeba vzduchu / Consumo aria

Technical informations page / Stránka technických informací / Pagina dati tecnici

POSSIBLE INSTALLATION / MONTÁŽ / POSSIBILE MONTAGGIO

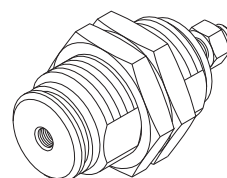
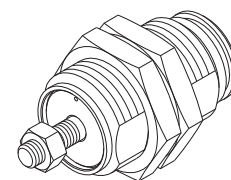
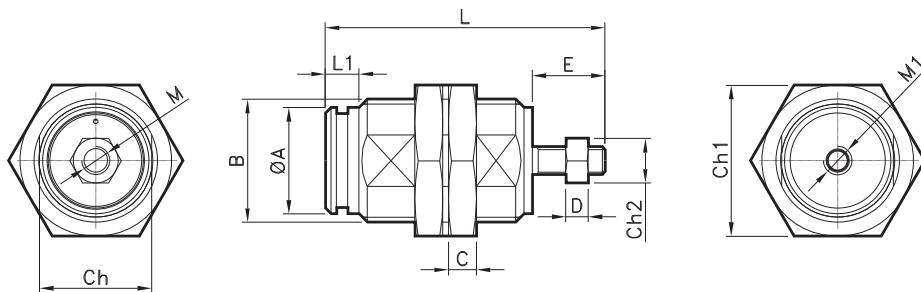
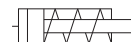


Dimensions for machining cylinder seat / Rozměry pro obrábění sedla válce / Dimensioni per la lavorazione sede cilindro

Ø	M	L / C			L1 / C			L2 / C			L3 / C			ØD
		5	10	15	5	10	15	5	10	15	5	10	15	
6	M10x1	5	5	5	10	17	24	12	19	26	16	24	31	8.5
10	M15x1.5	6	6	6	11	17	24	13	19	26	20	26	34	12
16	M22x1.5	7	7	7	15	20	25	17	21	27	26	31	36	19

Threaded rod
jednočinný závit na pístnici
Stelo filettato

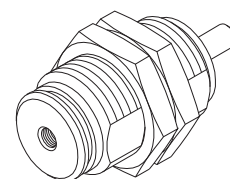
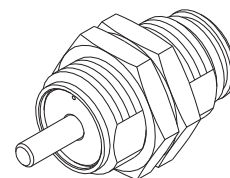
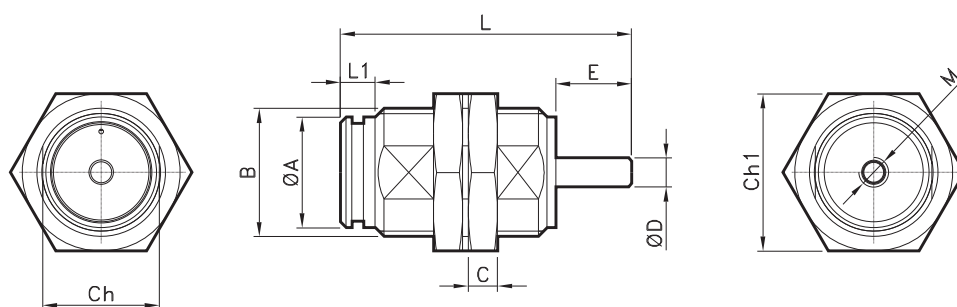
CODE: CH162.Ø.mm



Ø	ØA	B	CH1	C	CH2	D	E	L (05 - 10 - 15)	L1	M	M1	CH
6	8.5	M10x1	14	3	5.5	2.4	8	27.5 - 34.5 - 41.5	5	M3	M5	9
10	12	M15x1.5	19	4	7	3.2	10.5	33.5 - 40 - 47	7	M4	M5	14
16	19	M22x1.5	27	5	8	4	13	40 - 45 - 50	6	M5	M5	20

Smooth rod
jednočinný bez závitů na pístnici
Stelo liscio

CODE: CH172.Ø.mm



Ø	ØA	B	CH1	C	D	E	L (05 - 10 - 15)	L1	M	CH
6	8.5	M10x1	14	3	3	8	27.5 - 34.5 - 41.5	5	M5	9
10	12	M15x1.5	19	4	4	10.5	33.5 - 40 - 47	7	M5	14
16	19	M22x1.5	27	5	5	13	40 - 45 - 50	6	M5	20