

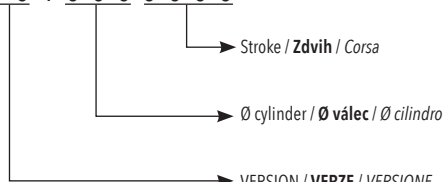
POS introduce the new compact cylinder CP series with big dimensions.
In all applications requiring great push force in small spaces, the new cylinder CP series is the correct answer.

POS představuje novou řadu kompaktních válců CP s velkými rozměry.
Ve všech aplikacích vyžadujících velkou tlačnou sílu v malých prostorech je nová řada válců CP správnou odpovědí.

POS presenta i nuovi cilindri compatti di grandi dimensioni.
In tutte le applicazioni ove sia necessario avere grande forza di spinta in ridotti spazi, il nuovo cilindro della serie CP, è la risposta giusta.

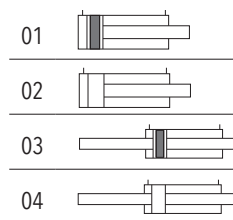
ORDERING CODE / OBJEDNÁVKOVÝ KÓD / CHIAVE DI CODIFICA

C P 0 0 1 0 0 0 0 0 0



- 01= Double acting magnetic / Dvojčinný s magnetem / Doppio effetto magnetico
- 02= Double acting non magnetic / Dvojčinný bez magnetu / Doppio effetto non magnetico
- 03= Through rod-magnetic / Dvojčinný s průběžnou pístnicí s magnetem / Stelo passante magnetico
- 04= Through rod non magnetic / Dvojčinný s průběžnou pístnicí bez magnetu / Stelo passante non magnetico

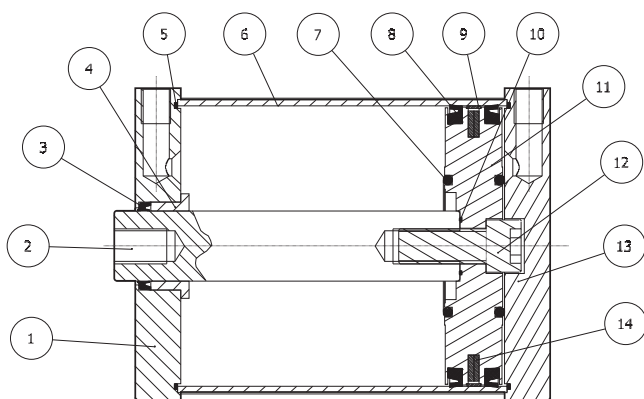
VERSION / VERZE / VERSIONE



TECHNICAL DATA / TECHNICKÁ DATA / DATI TECNICI

Sizes / Velikosti / Alesaggi	Ø125-160-200
Standard strokes / Zdvih standard / Corse standard	mm 5-10-15-20-25-30-40-50-60-70-80-90-100-125-160-200-250
Fluid / Médium / Fluido	Lubricated or non lubricated air / Mazaný nebo nemazaný vzduch / Aria con o senza lubrificazione
Operating temperature range / Rozsah provozních teplot / Temperatura di esercizio	-20°C / +80°C
Max operating pressure / Maximální provozní tlak / Pressione massima di esercizio	10 bar
Force / Síly / Forze sviluppate	Technical informations page / Stránka technických informací / Pagina dati tecnici
Air consumption / Spotřeba vzduchu / Consumo aria	Technical informations page / Stránka technických informací / Pagina dati tecnici

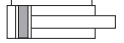
COMPONENTS / KOMPONENTY / COMPONENTI



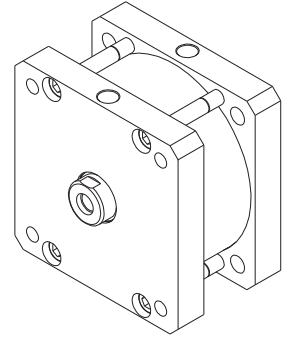
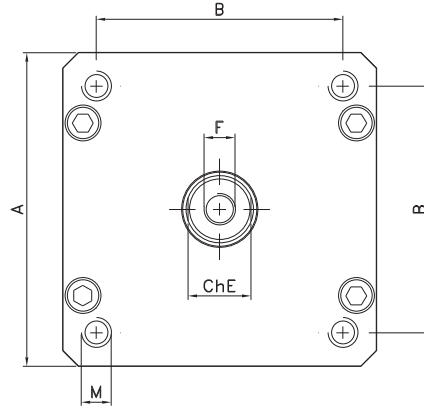
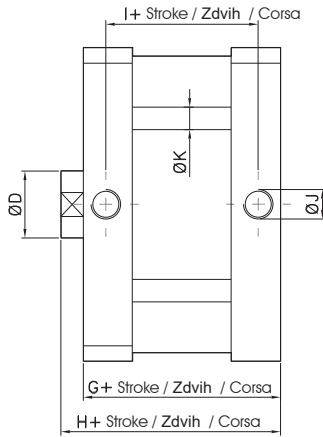
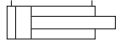
DESCRIPTION / POPIS / DESCRIZIONE	MATERIAL / MATERIÁL / MATERIALE
1 cap / přední víko / testata anteriore	aluminium / hliník / alluminio
2 rod / pístní tyč / stelo	steel C40 chromed / C40 chromované / C40 cromato
3 rod seal / těsnění pístní tyče / guarn. stelo	polyurethane / polyurethan / poliuretano
4 guide bush / vodící pouzdro / bussola guida	bronze / bronze / bronzo
5 o-ring / O-kroužek	NBR
6 tube / trubka / tubo	aluminium / hliník / alluminio
7 o-ring / O-kroužek	NBR
8 seal piston / těsnění pístu / guarnizione pist.	polyurethane / polyurethan / poliuretano
9 guide strip / těsnění / fascia guida	PBT + PTFE
10 o-ring / O-kroužek	NBR
11 piston / píst / pistone	aluminium / hliník / alluminio
12 piston screw / šroub píst / vite pistone	steel / ocel / acciaio
13 cap / zadní víčko / testata posteriore	aluminium / hliník / alluminio
14 magnet / magnet / magnete	plastroferrite

Double acting
Dvojčinné
Doppio effetto

CODE: CP011.Ø.mm



CODE: CP021.Ø.mm



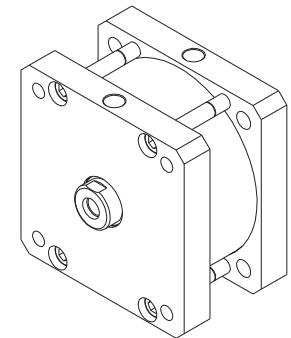
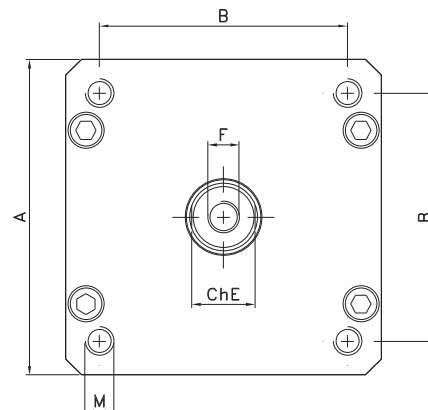
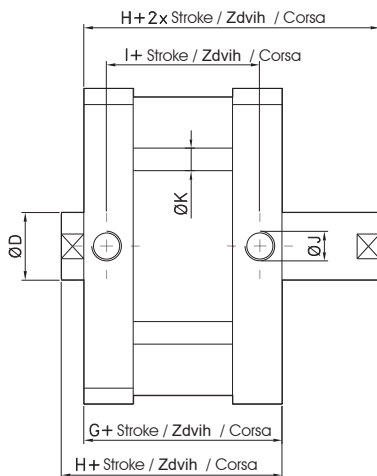
Ø	A	B	M	ØD	E	F	G	H	I	J	ØK
125	140	110	M12	30	28	M14x25 ut.	78	88	58	G1/4"	10
160	180	140	M16	40	36	M20x30 ut.	87	99	63	G3/8"	12
200	220	175	M16	40	36	M20x30 ut.	87	99	63	G3/8"	14

Through rod
Dvojčinný s průběžnou pistnicí
Stelo passante

CODE: CP031.Ø.mm



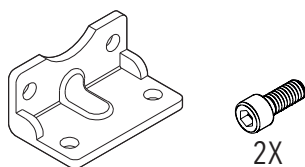
CODE: CP041.Ø.mm



Ø	A	B	M	ØD	E	F	G	H	I	J	ØK
125	140	110	M12	30	28	M14x25 ut.	78	88	58	G1/4"	10
160	180	140	M16	40	36	M20x30 ut.	87	99	63	G3/8"	12
200	220	175	M16	40	36	M20x30 ut.	87	99	75	G3/8"	14

PEDESTAL
BOČNÍ PATKA
PIEDINO

Material: Steel
Materiál: Ocel
Materiale: Acciaio

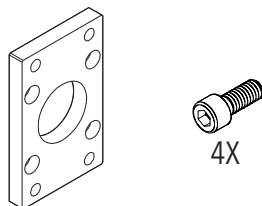


CODE	Ø
AR4152125-V	125
AR4152160-V	160
AR4152200-V	200

2X

FLANGE
ČELNÍ (ZADNÍ) DESKA
FLANGIA

Material: Steel
Materiál: Ocel
Materiale: Acciaio

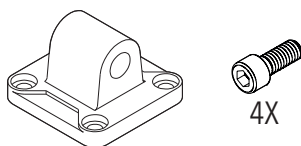


CODE	Ø
AR4151125-V	125
AR4151160-V	160
AR4151200-V	200

4X

MALE HINGE
ZADNÍ KYVNÉ OKO
CERNIERA MASCHIO

Material: Aluminium
Materiál: hliník
Materiale: Alluminio

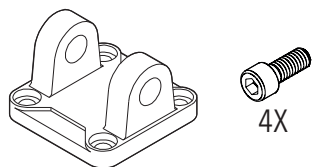


CODE	Ø
AR4149125-V	125
AR4149160-V	160
AR4149200-V	200

4X

FEMALE HINGE
ZADNÍ KYVNÉ LOŽISKO
CERNIERA FEMMINA

Material: Aluminium
Materiál: hliník
Materiale: Alluminio

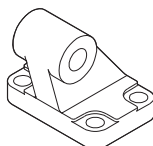


CODE	Ø
AR4147125-V	125
AR4147160-V	160
AR4147200-V	200

4X

SQUARE JOINT
ČTVERCOVÝ KLOUB
ARTICOLAZIONE A SQUADRA

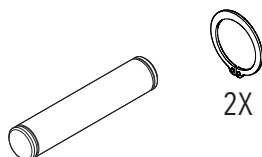
Material: Aluminium
Materiál: hliník
Materiale: Alluminio



CODE	Ø
AR4156125	125
AR4156160	160
AR4156200	200

PIVOT FOR FEMALE HINGE
ČEP
PERNO PER CERNIERA FEMMINA

Material: Steel
Materiál: Ocel
Materiale: Acciaio

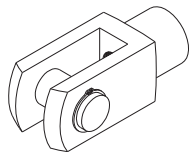


CODE	Ø
AR4150125	125
AR4150160	160
AR4150200	200

2X

YOKE WITH PIVOT
VIDLICE NA PÍSTNICI
FORCELLA CON PERNO

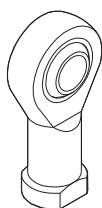
Material: Steel
Materiál: Ocel
Materiale: Acciaio



CODE	Ø
AR40678	125
AR40679	160-200

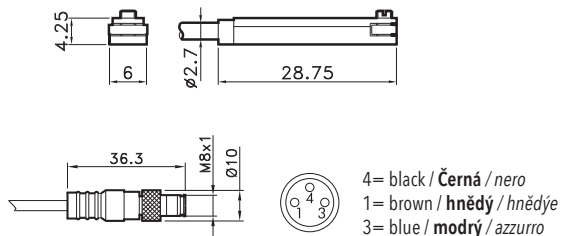
ROD ENDS
OKO KYVNÉ
TESTA A SNODO

Material: Steel
Materiál: Ocel
Materiale: Acciaio



CODE	Ø
AR40667	125
AR40669	160-200

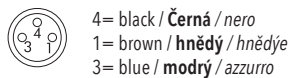
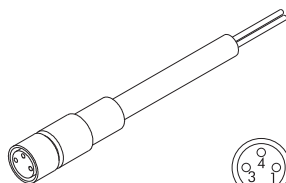
T SWITCH
MAGNETICKÝ SNÍMAČ POLOHY
SENSORE A T



CODE	
AR4023010	REED (MT.2,5) / REED (MT.2,5) / REED (MT.2,5)
AR4023020	HALL (MT.2,5) / HALL (MT.2,5) / HALL (MT.2,5)
AR4023110	REED + M8 (CM 30) / REED + M8 / REED + M8 (CM 30)
AR4023120	HALL + M8 (CM 30) / HALL + M8 / HALL + M8 (CM 30)

For technical data see page 1.62
Technické údaje viz strana 1.62
Per i dati tecnici vedere pag. 1.62

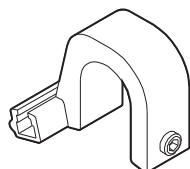
EXTENSION CABLE 2,5 mt
ROZŠÍŘENÍ KABELŮ 2,5 mt
ROLUNGA CAVO 2,5 mt



CODE	
AR4300	WITH M8 2 WIRES / AVEC M8 2 FILS / CON M8 2 FILI
AR4301	WITH M8 3 WIRES / AVEC M8 3 FILS / CON M8 3 FILI

ADAPTOR FOR 'T' SWITCH
ADAPTÉR PŘEPÍNAČE „T“
ADATTATORE SENSORE A "T"

Material: Aluminium
Materiál: hliník
Materiale: Alluminio



CODE	Ø
AR4200125	125-160-200